

Refiled to correct corner certificate previously recorded in section 34. Section should have been 24.

"NOT" Recorded in Black Hawk County.

BY TERRY D. VAN LANINGHAM, PLS * 810 12TH AVENUE, N.W. WAVERLY IOWA * (319) 352-2132
UNITED STATES PUBLIC LAND SURVEY CORNER CERTIFICATE
OF

Land Survey Monuments situated in Section 24, Township 90 N, Range 15 W, of the Fifth Principal Meridian, BUTLER County, Iowa. Previously recorded in _____ in County Recorder's Office.

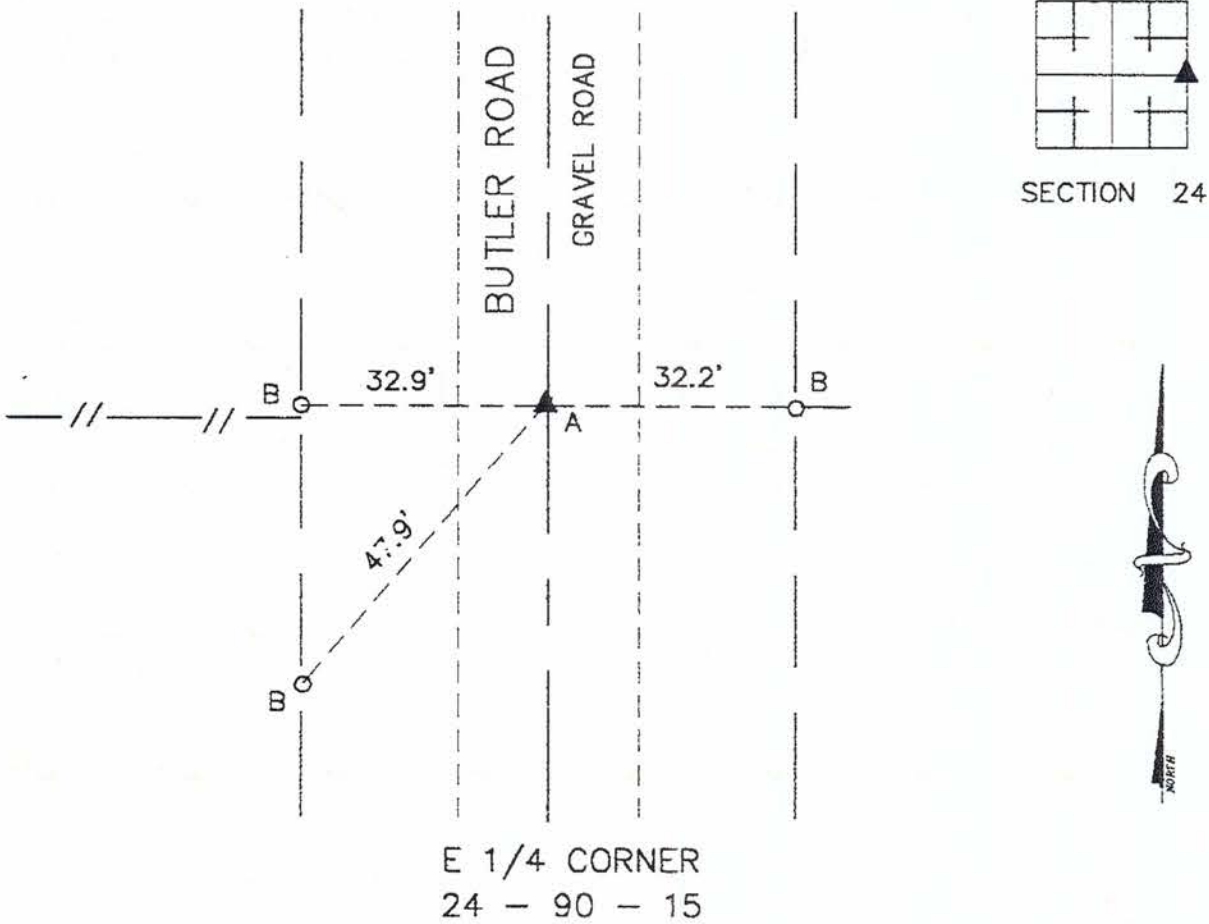
(book, page, document number, etc.)

(Show reason for preparing this certificate, the evidence and detailed procedures used in establishing the corner positions and monumentation found or placed.)

Monument Description and Remarks: _____
A - FOUND REBAR
B - 2" PIPE

PLAN VIEW

(Show a minimum of three reference ties to durable physical objects, relevant monuments and physical conditions that will enable recovery of the corner.)



E 1/4 CORNER
24 - 90 - 15

I hereby certify that this land surveying document was prepared by me or under my direct personal supervision and that I am a duly Registered Land Surveyor under the laws of the State of Iowa.

Signature: Terry D. Van Laningham
Terry D. Van Laningham, PLS

Date: June 26, 1996 Reg. No. 10793

My registration renewal date is December 31, 1997.



SEAL

List Corners to be Indexed

Corners	Section	Township	Range
E 1/4 COR.	24	90 N	15 W

1596
STATE OF IOWA BUTLER COUNTY
FILED FOR RECORD THE 28 DAY OF
June 1996 AT 5:25 O'CLOCK
PAGE 137
FILE NO. 10793 FEE 10.00
Terry D. Van Laningham RECORDER

BOOK 1 PAGE 137

TERRY D. VAN LANINGHAM, PLS. INC.
810 12TH AVE. NW, WAVERLY, IOWA (319) 352 - 2132

refiled to correct corner certificate previously recorded in section 34. Section should have been 24.

BY TERRY D. VAN LANINGHAM, PLS * 810 12TH AVENUE, N.W. WAVERLY, IOWA * (319) 352-2132
UNITED STATES PUBLIC LAND SURVEY CORNER CERTIFICATE
OF

and Survey Monuments situated in Section 24, Township 90 N, Range 15 W,
of the Fifth Principal Meridian, BUTLER County, Iowa. Previously recorded
in _____ in County Recorder's Office.

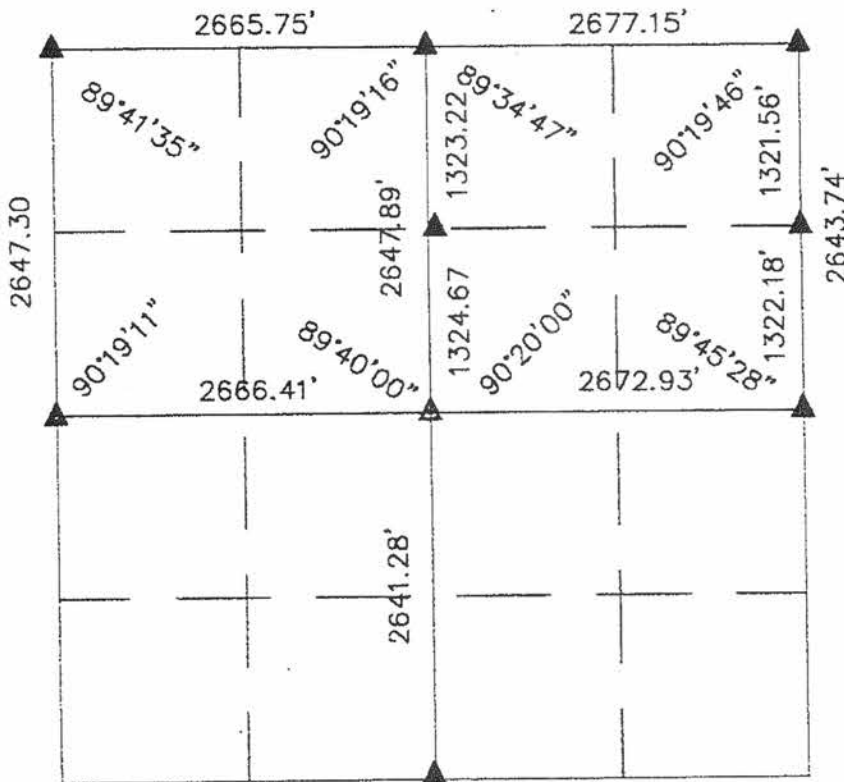
(book, page, document number, etc.)

(Show reason for preparing this certificate, the evidence and detailed procedures used in establishing the corner positions and monumentation found or placed.)

Monument Description and Remarks: Summary of Section 24

PLAN VIEW

(Show a minimum of three reference ties to durable physical objects, relevant monuments and physical conditions that will enable recovery of the corner.)



SECTION 24

I hereby certify that this land surveying document was prepared by me or under my direct personal supervision and that I am a duly Registered Land Surveyor under the laws of the State of Iowa.

Signature: Terry D. Van Laningham
Terry D. Van Laningham, PLS

Date: June 26, 1996 Reg. No. 10793

My registration renewal date is December 31, 1997.



SEAL

List Corners to be Indexed

Corners	Section	Township	Range
	24	90 N	15 W

STATE OF IOWA BUTLER COUNTY
FILED FOR RECORD THE 28 DAY OF JUNE 1996 AT 8 20 O'CLOCK
P. M. BOOK 1 PAGE 136
FILE NO. 11-94 FEE 5.00
J. J. J. RECORDER

TERRY D. VAN LANINGHAM, PLS. INC.
810 12TH AVE. NW WAVERLY, IOWA (319) 352 - 2132