

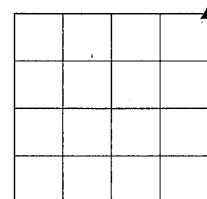
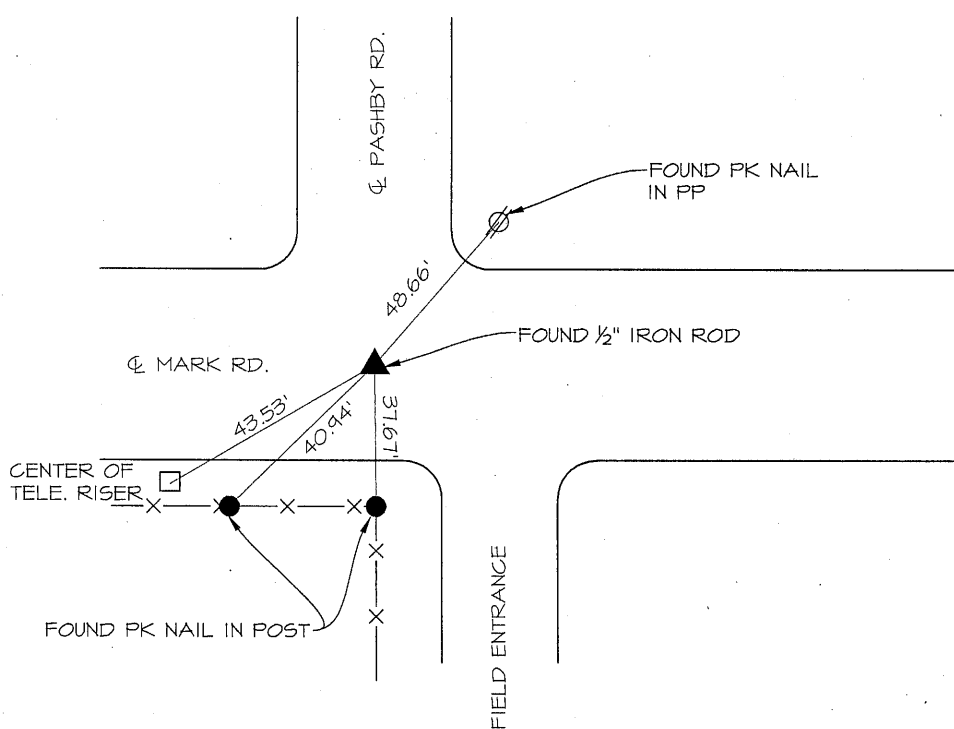
PREPARED BY PATRICK SHEPARD: CIVIL ENGINEERING CONSULTANTS, INC. - 2400 86th ST. #12 -DES MOINES, IOWA 50322

UNITED STATES PUBLIC LAND SURVEY CORNER CERTIFICATE OF

LAND SURVEY MONUMENTS SITUATED IN SECTION 19, TOWNSHIP 90 NORTH, RANGE 14 WEST, OF THE FIFTH PRINCIPAL MERIDIAN, BLACK HAWK COUNTY, IOWA. NO PREVIOUS RECORD FOUND AT THE BLACK HAWK COUNTY RECORDER'S OFFICE.

MONUMENT DESCRIPTION AND REMARKS: NE CORNER, 19-90-14 FOUND 1/2" IRON ROD IN THE INTERSECTION OF THE CENTERLINE OF ROAD THAT MATCHES CORNER FOUND AND ACCEPTED AS THE SE CORNER 18-90-14 IN A PLAT OF SURVEY RECORDED IN DOC. #2007019462. THIS CERTIFICATE IS BEING PREPARED TO DOCUMENT MONUMENTATION FOUND AND ACCEPTED AS THE NE CORNER AND TO PROVIDE TIES.

PLAN -VIEW

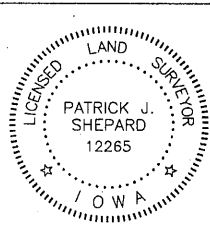


SECTION 19



LIST CORNERS TO BE INDEXED

CORNERS	SECTION	TWP.	RANGE
NE CORNER	19	90	14
NW CORNER	20	90	14
SE CORNER	18	90	14
SW CORNER	17	90	14



I HEREBY CERTIFY THAT THIS LAND SURVEYING DOCUMENT WAS PREPARED AND THE RELATED SURVEY WORK WAS PERFORMED BY ME OR UNDER MY DIRECT PERSONAL SUPERVISION AND THAT I AM A DULY LICENSED LAND SURVEYOR UNDER THE LAWS OF THE STATE OF IOWA.
PShepard 1-24-13
PATRICK J. SHEPARD, IOWA LICENSE NO. 12265 DATE
MY LICENSE RENEWAL DATE IS DECEMBER 31, 2013
PAGES OR SHEETS COVERED BY THIS SEAL:

THIS SHEET ONLY