

UNITED STATES PUBLIC LAND SURVEY CORNER CERTIFICATE OF

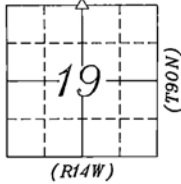
LAND SURVEY SITUATED IN:	Section 19, Township 90 North, Range 14 West, of the Fifth Principal Meridian, Black Hawk County, Iowa.
PREVIOUSLY RECORDED IN BOOK:	
INSTRUMENT #:	2013-00015734
FIELD WORK COMPLETED:	12/16/2019
SURVEY PREPARED BY: RESPOND TO:	CLAPSADDLE-GARBER ASSOCIATES, INC, 5106 NORDIC DRIVE, CEDAR FALLS, IOWA 50613 PHONE 319-266-0258 mhoodjer@CGACONSULTANTS.COM



Doc ID: 010031480001 Type: GEN
Recorded: 12/22/2020 at 11:07:03 AM
Fee Amt: \$7.00 Page 1 of 1
Black Hawk County Iowa
SANDIE L. SMITH RECORDER

File **2021-00013215**

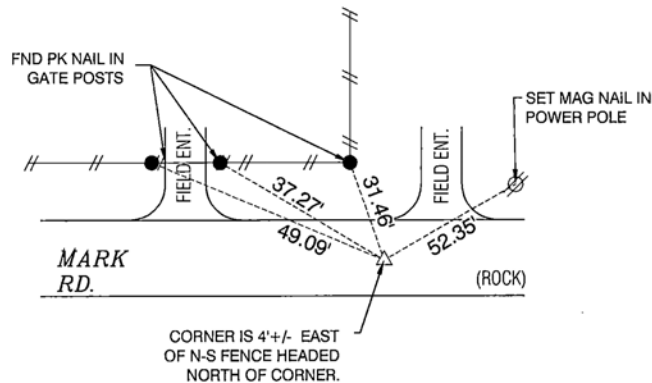
THIS CERTIFICATE WAS PREPARED BECAUSE CORNER WAS OBLITERATED. CORNER WAS SET USING METHODS DESCRIBED BELOW.



PLAN-VIEW NO SCALE

LEGEND:

- ▲ GOVERNMENT CORNER MONUMENT FOUND
- △ GOVERNMENT CORNER MONUMENT SET
- 1/2" x 30" REBAR w/YELLOW PLASTIC ID CAP #22634
- /// EXISTING FENCE
- NAIL w/SM NAIL WITH SURVEY MARKER



N 1/4 CORNER SECTION 19-90-14

FND 1/2" T-BAR 5" DEEP USING INFORMATION OBTAINED FROM CORNER CERTIFICATE FILE NO. 2013-00015734 IN THE OFFICE OF THE RECORDER, BLACK HAWK COUNTY, IOWA. BETWEEN PRELIMINARY FIELD WORK AND FINAL FIELD WORK, THIS CORNER WAS OBLITERATED DUE TO GRADING ALONG MARK RD. RESET CORNER USING THE ORIGINAL LOCATION OF FOUND 1/2" T-BAR.



Clapsaddle-Garber Associates, Inc
5106 Nordic Drive
Cedar Falls, Iowa 50613
Ph 319-266-0258
www.cgaconsultants.com

DRAWN KNW	SHEET NO. 1
DATE 12-17-20	PROJECT NO. 78271.05

List Corners to be Indexed

Corners	Section	Township	Range
N 1/4 COR	19	90N	14W



I hereby certify that this land surveying document was prepared and the related survey work was performed by me or under my direct personal supervision and that I am a duly Licensed Professional Land Surveyor under the laws of the State of Iowa.

Marc C. Hoodjer, PLS

Iowa License Number 22634

My License Renewal Date is December 31, 2020

Pages or sheets covered by this seal: THIS SHEET

12-17-2020
date

File Number: 2021-00013215 Seq: 1