

UNITED STATES PUBLIC LAND SURVEY CORNER CERTIFICATE  
OF

Land Survey Monuments situated in Section 18, Township 90 N, Range 14 W, of the Fifth Principal Meridian, BLACK HAWK COUNTY County, Iowa  
Previously recorded in Book N/A, Page .

Show reason for preparing this certificate, the evidence and detailed procedures used in establishing the corner positions and monumentation found or placed.)

Monument Description and Remarks: SOUTHEAST CORNER OF THE NORTH HALF OF THE SOUTHEAST QUARTER SET 5/8" REBAR WITH RED PLASTIC CAP #12088, 4" DEEP

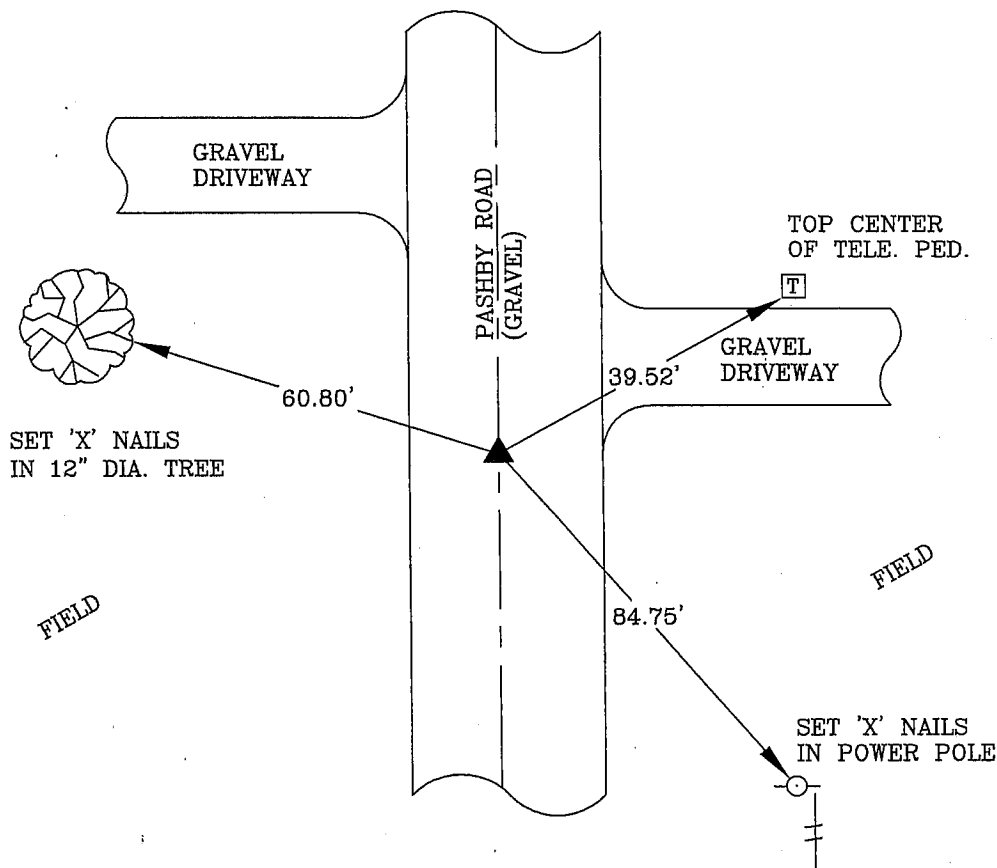
CORNER WAS SET AT THE MIDPOINT BETWEEN THE EAST QUARTER CORNER AND THE SOUTHEAST CORNER

CORNER WAS SET FOR A SURVEY IN THE NORTH HALF OF THE SOUTHEAST QUARTER OF SAID SECTION

NO CORNER CERTIFICATE PREVIOUSLY RECORDED

## PLAN - VIEW

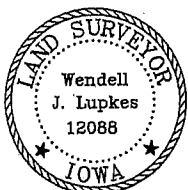
(Show a minimum of three reference ties to durable physical objects, relevant monuments and physical conditions recovery of the corner.)



## LEGEND

- SECTION CORNER SET
- POWER POLE
- FENCE LINE
- FENCE CORNER FOUND
- FENCE POST
- LIGHT POLE
- TREE
- TELEPHONE PED.
- CONC. REF. MONUMENT

I hereby certify that this land surveying document was prepared and the related survey work was performed by me or under my direct personal supervision and that I am a duly licensed Land Surveyor under the laws of the State of Iowa.



Wendell J. Lupkes  
WENDELL J. LUPKES, L.S. DATE

License number 12088

My license renewal date is December 31, 2008

Pages or sheets covered by this seal: 1

## List Corner to be Indexed

Corner	Section	Twp	Range
SE COR.,	18	90	14
N 1/2,			
SE 1/4			



VJ Engineering  
1501 Technology Parkway  
Cedar Falls, Iowa - 319-266-5829

SECTION CORNER  
REFERENCE TIES

Scale  
NONE

drawn by  
MAK  
date  
3/9/07