

Patricia A. Suss

HELLAND ENGINEERING & SURVEYING LTD

Paul H. Helland, 1107 Technology Parkway, Cedar Falls, Iowa 50613-6951, (319)-266-0161

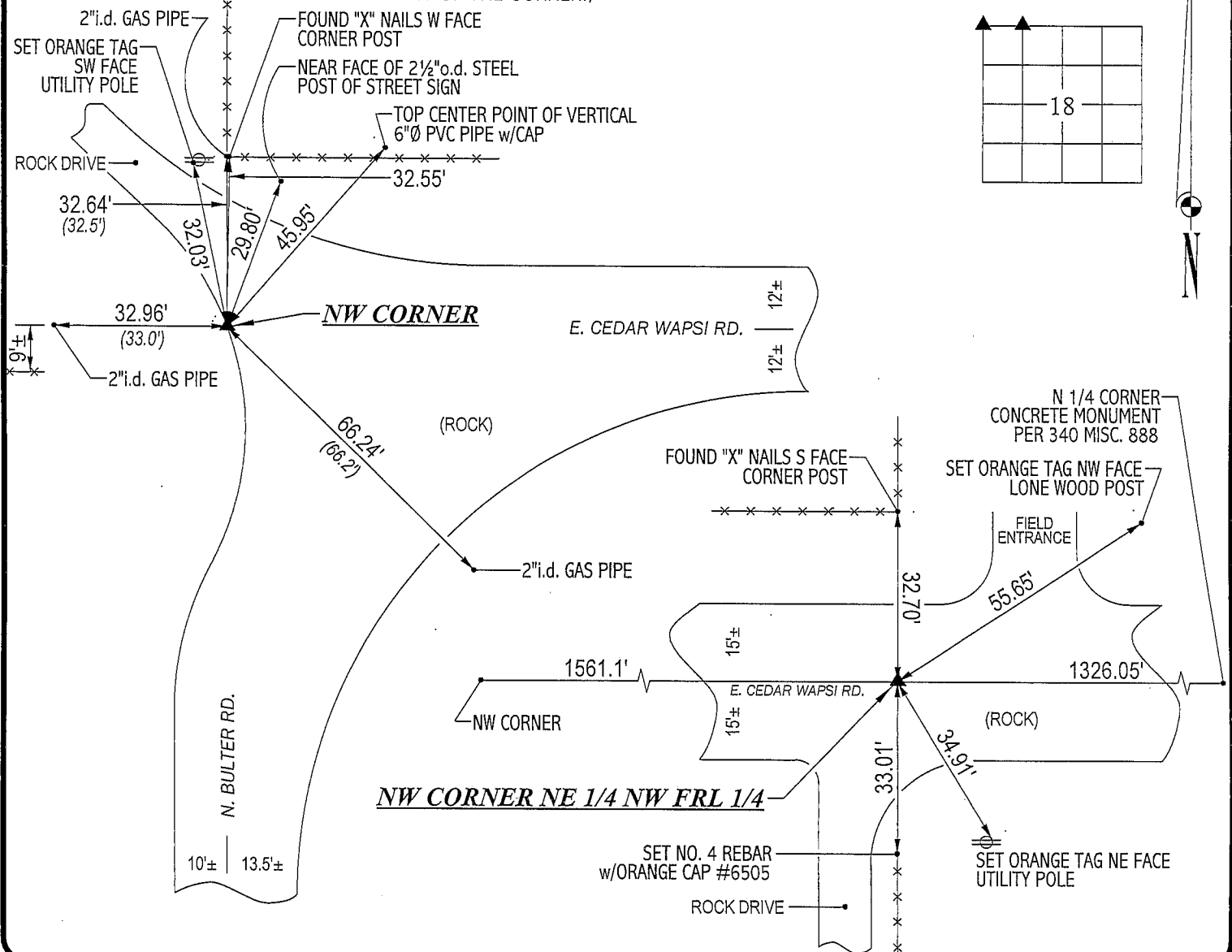
UNITED STATES PUBLIC LAND SURVEY CORNER CERTIFICATE
OFLAND SURVEY MONUMENTS SITUATED IN SECTION NO. 18, TOWNSHIP NO. 90 NORTH, RANGE
NO. 14 WEST OF THE FIFTH PRINCIPAL MERIDIAN, BLACK HAWK COUNTY, IOWA.PREVIOUSLY RECORDED IN BOOK 341, PAGE 340. (N.W. COR.) 347(SHOW REASON FOR PREPARING THIS CERTIFICATE, THE EVIDENCE AND DETAILED PROCEDURES USED IN ESTABLISHING THE
CORNER POSITIONS AND MONUMENTATION FOUND OR PLACED.)

MONUMENT DESCRIPTION AND REMARKS:

NO CORNER CERTIFICATE ON FILE. SURVEY DONE IN "PLANTZ SUBDIVISION" SEC. 18-T90N-R14W.

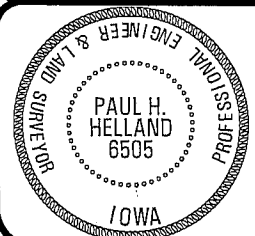
- NW CORNER: BLACK HAWK COUNTY ENGINEER TIES DATED 11/13/1953 CALLS FOR "2"x28" PIPE OVER MON.", BUTLER COUNTY ENGINEER
TIES DATED 1/16/1979 CALLS FOR "GAS PIPE". FOUND 2"i.d. PIPE CORRESPONDING TO SAID TIES, 0.4' DEEP.
- NW CORNER OF NE 1/4 NW FRL 1/4: NO BLACK HAWK COUNTY ENGINEER TIES NOR BUTLER COUNTY ENGINEER TIES EXIST. SET NO. 4 REBAR
w/ORANGE CAP #6505 BASED UPON MONUMENTATION IN "PLANTZ SUBDIVISION".

PLAN VIEW

(SHOW A MINIMUM OF THREE REFERENCE TIES TO DURABLE PHYSICAL OBJECTS, RELEVANT MONUMENTS AND PHYSICAL
CONDITIONS THAT WILL ENABLE RECOVERY OF THE CORNER.)HELLAND ENGINEERING & SURVEYING, LTD.
1107 Technology Parkway
Cedar Falls, Iowa 50613-6951
(319)-266-0161

(00.00') - PER BUTLER COUNTY ENGINEER TIES

FILE NAME: 03-175C1.DRG

I hereby certify that this land surveying document was prepared
and the related survey work was performed by me or under my
direct personal supervision and that I am a duly licensed Land
Surveyor under the laws of the State of Iowa.*Paul H. Helland*
Paul H. Helland
License Number 6505
My license renewal date is December 31, 2003.
All pages or sheets are covered by this seal except:

LIST CORNERS TO BE INDEXED

CORNER	SECTION	TOWNSHIP	RANGE
NW CORNER	18	90N	14W
NW CORNER NE 1/4 NW FRL 1/4	18	90N	14W

Rac