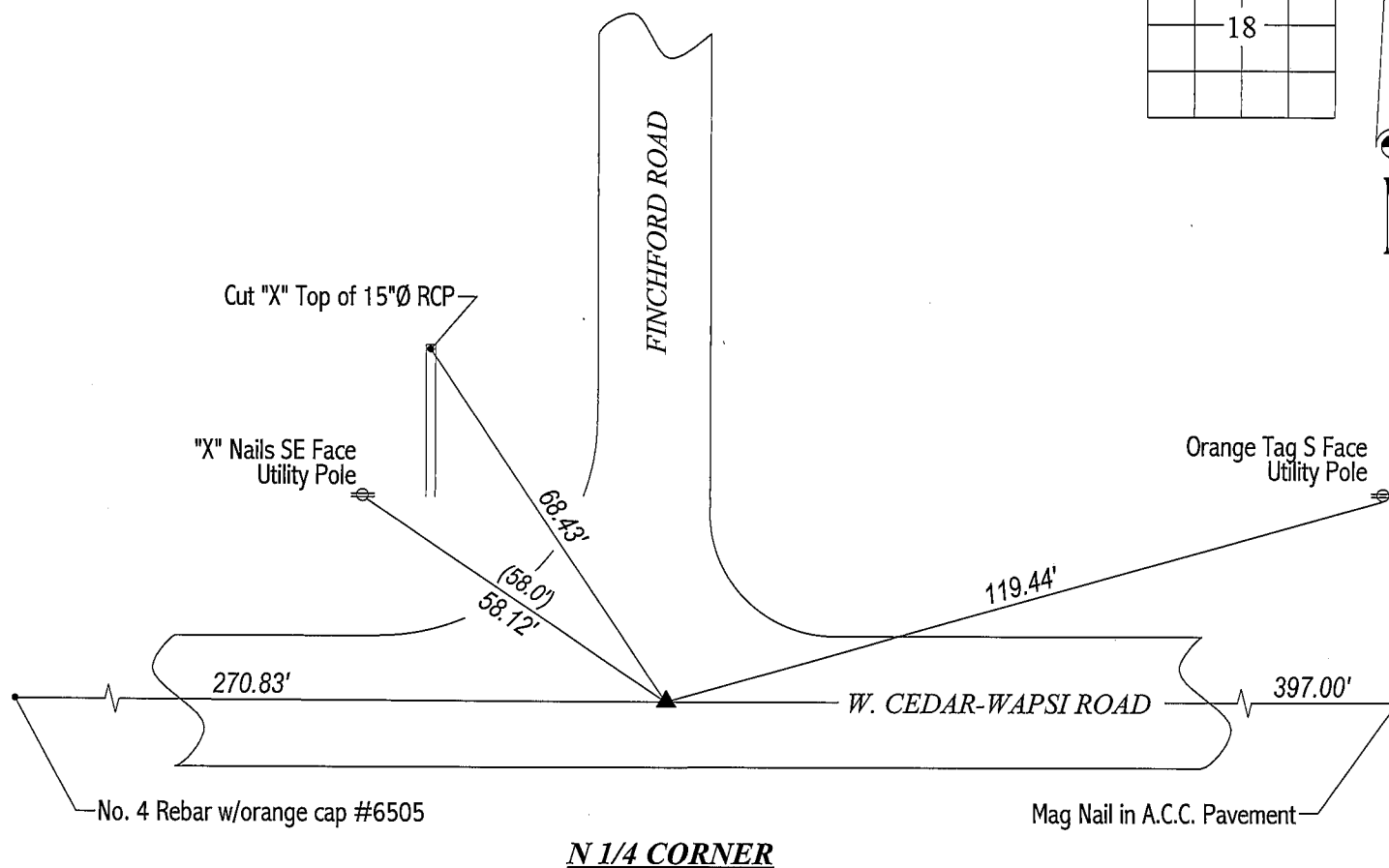


# UNITED STATES PUBLIC LAND SURVEY CORNER CERTIFICATE

N 1/4 CORNER: Found concrete monument w/brass cap 0.1' deep. Brass cap and surrounding concrete are becoming deteriorated from shallow depth in road.

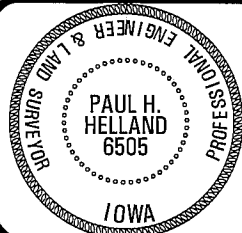


(0.0') - County reference tie



1107 Technology Parkway  
Cedar Falls, Iowa 50613-6951  
(319)-266-0161

FILE NAME: 00-307CC.DRG



*Paul H. Helland 192412*  
Paul H. Helland  
License Number 6505  
My license renewal date is December 31, 2001.  
All pages or sheets are covered by this seal except:

N 1/4 CORNER 18 90N 14W

*Fay*