

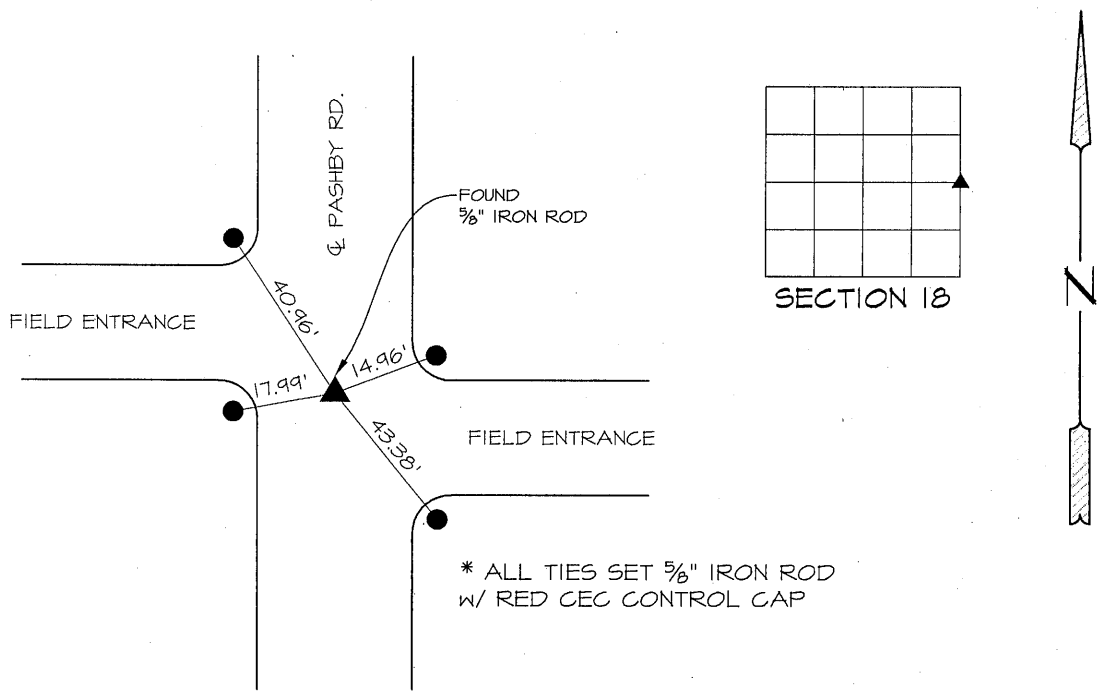
PREPARED BY PATRICK SHEPARD: CIVIL ENGINEERING CONSULTANTS, INC. - 2400 86th ST. #12 -DES MOINES, IOWA 50322

UNITED STATES PUBLIC LAND SURVEY CORNER CERTIFICATE OF

LAND SURVEY MONUMENTS SITUATED IN SECTION 18, TOWNSHIP 90 NORTH, RANGE 14 WEST, OF THE FIFTH PRINCIPAL MERIDIAN, BLACK HAWK COUNTY, IOWA. PREVIOUS RECORD FOUND AT THE BLACK HAWK COUNTY RECORDER'S OFFICE IN FILE 2012-00016293.

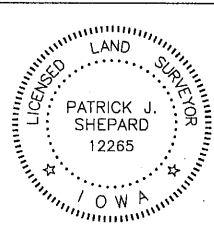
MONUMENT DESCRIPTION AND REMARKS: E 1/4 CORNER, 18-90-14 FOUND 5/8" IRON ROD THAT MATCHES PREVIOUS RECORD AND CORNER USED IN PLAT OF SURVEY IN DOC. 2007019462. NO PREVIOUS TIES WERE FOUND. THIS CERTIFICATE IS BEING PREPARED TO REPLACE LOST TIES.

PLAN -VIEW



LIST CORNERS TO BE INDEXED

CORNERS	SECTION	TWP.	RANGE
E 1/4 CORNER	18	90	14
W 1/4 CORNER	17	90	14



I HEREBY CERTIFY THAT THIS LAND SURVEYING DOCUMENT WAS PREPARED AND THE RELATED SURVEY WORK WAS PERFORMED BY ME OR UNDER MY DIRECT PERSONAL SUPERVISION AND THAT I AM A DULY LICENSED LAND SURVEYOR UNDER THE LAWS OF THE STATE OF IOWA.
Patrick J. Shepard 1-24-13
PATRICK J. SHEPARD, IOWA LICENSE NO. 12265 DATE
MY LICENSE RENEWAL DATE IS DECEMBER 31, 2013
PAGES OR SHEETS COVERED BY THIS SEAL:
THIS SHEET ONLY