

Jeffrey P. Helland, 1107 Technology Parkway, Cedar Falls, Iowa 50613-6951, (319)-266-0161

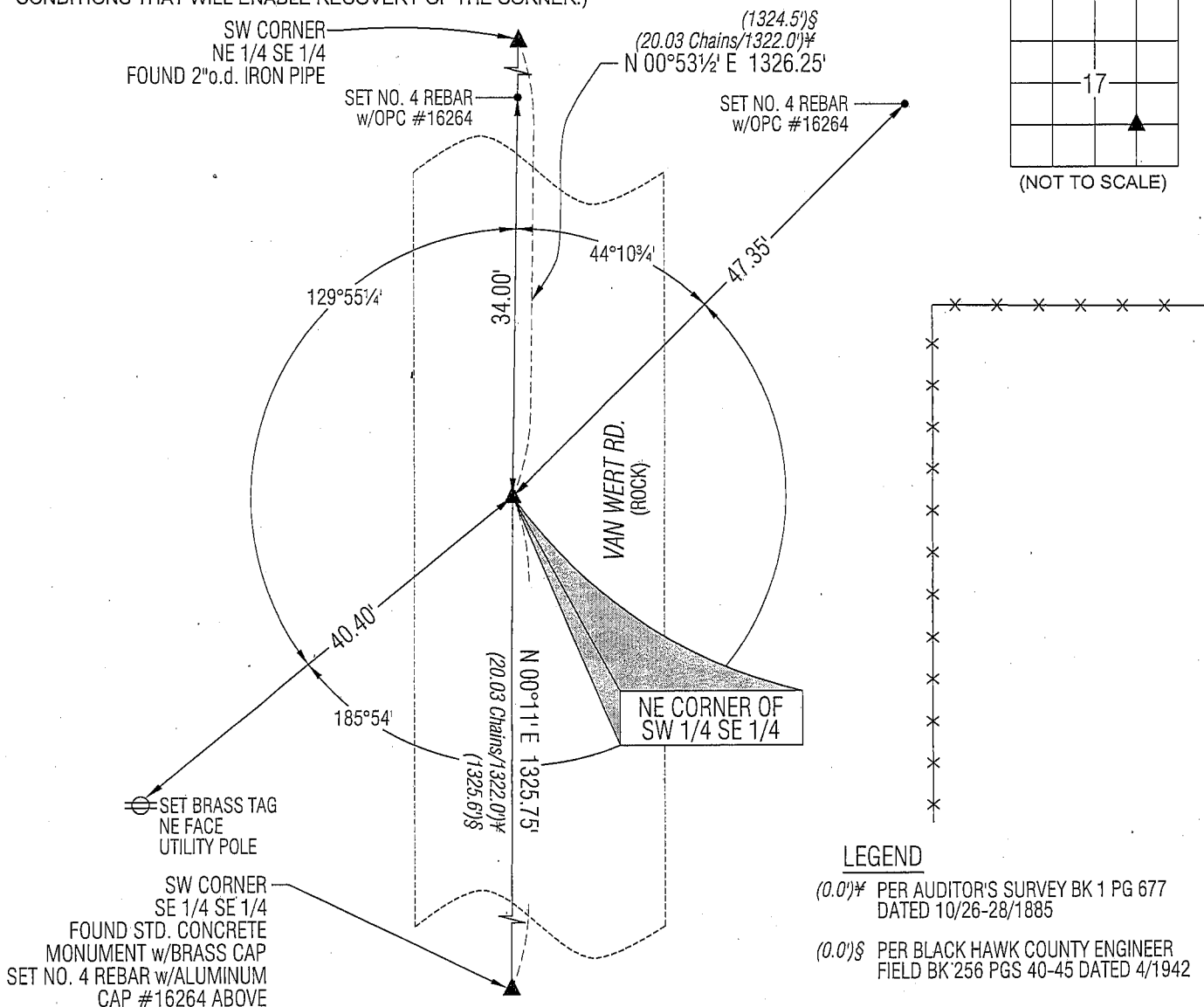
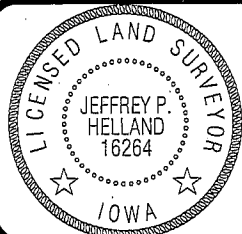
UNITED STATES PUBLIC LAND SURVEY CORNER CERTIFICATE  
OFLAND SURVEY MONUMENTS SITUATED IN SECTION NO. 17, TOWNSHIP NO. 90 NORTH, RANGE  
NO. 1214 WEST OF THE FIFTH PRINCIPAL MERIDIAN, BLACK HAWK COUNTY, IOWA.  
PREVIOUSLY RECORDED IN N/A(SHOW REASON FOR PREPARING THIS CERTIFICATE, THE EVIDENCE AND DETAILED PROCEDURES USED IN ESTABLISHING THE  
CORNER POSITIONS AND MONUMENTATION FOUND OR PLACED.)

## MONUMENT DESCRIPTION AND REMARKS:

NO USPLSCC ON FILE. SURVEY COMPLETED IN PART OF THE NE 1/4 SE 1/4 OF SEC. 17-T90N-R14W.

→ **NE CORNER SW 1/4 SE 1/4:** AUDITOR'S SURVEY BK 1 PG 677 DATED 10/26-28/1885 CALLS FOR [STONE & STAKE].  
BLACK HAWK COUNTY ENGINEER FIELD BOOK #256 PG. 43 DATED APRIL 1942 CALLS FOR [1/4 - 1/4 LINE FOUND STONE SET  
IRON PIPE ON TOP.]. FOUND 2" O.D. OPEN PIPE 0.2' DEEP. SET "MAG" NAIL IN TOP CENTER OF PIPE.

## PLAN VIEW

(SHOW A MINIMUM OF THREE REFERENCE TIES TO DURABLE PHYSICAL OBJECTS, RELEVANT MONUMENTS AND PHYSICAL  
CONDITIONS THAT WILL ENABLE RECOVERY OF THE CORNER.)HELLAND ENGINEERING & SURVEYING, LTD.  
1107 Technology Parkway  
Cedar Falls, Iowa 50613-6951  
(319)-266-0161SHINER = 8D NAIL & 1 5/16"Ø METAL SHINER  
BRASS TAG = 13/16"Ø BRASS TAG  
OPC = PLASTIC CAP (O=ORANGE, R=RED, Y=YELLOW)  
(00') RECORDED AS FILE NAME: 08-264C10.DWGI hereby certify that this land surveying document was prepared  
and the related survey work was performed by me or under my  
direct personal supervision and that I am a duly licensed Land  
Surveyor under the laws of the State of Iowa.Jeffrey P. Helland 11/17/08  
Jeffrey P. Helland  
License Number 16264  
My license renewal date is December 31, 2009.  
All pages or sheets are covered by this seal except:

## LIST CORNERS TO BE INDEXED

CORNER	SECTION	TOWNSHIP	RANGE
NE COR. SW 1/4 SE 1/4	17	90N	14W
SE COR. NW 1/4 SE 1/4	17	90N	14W
SW COR. NE 1/4 SE 1/4	17	90N	14W
NE COR. SE 1/4 SE 1/4	17	90N	14W

Rec