

Jeffrey P. Helland, 1107 Technology Parkway, Cedar Falls, Iowa 50613-6951, (319)-266-0161

UNITED STATES PUBLIC LAND SURVEY CORNER CERTIFICATE OF

LAND SURVEY MONUMENTS SITUATED IN SECTION NO. 17, TOWNSHIP NO. 90 NORTH, RANGE NO. 14 WEST OF THE FIFTH PRINCIPAL MERIDIAN, BLACK HAWK COUNTY, IOWA.
PREVIOUSLY RECORDED IN N/A

(SHOW REASON FOR PREPARING THIS CERTIFICATE, THE EVIDENCE AND DETAILED PROCEDURES USED IN ESTABLISHING THE CORNER POSITIONS AND MONUMENTATION FOUND OR PLACED.)

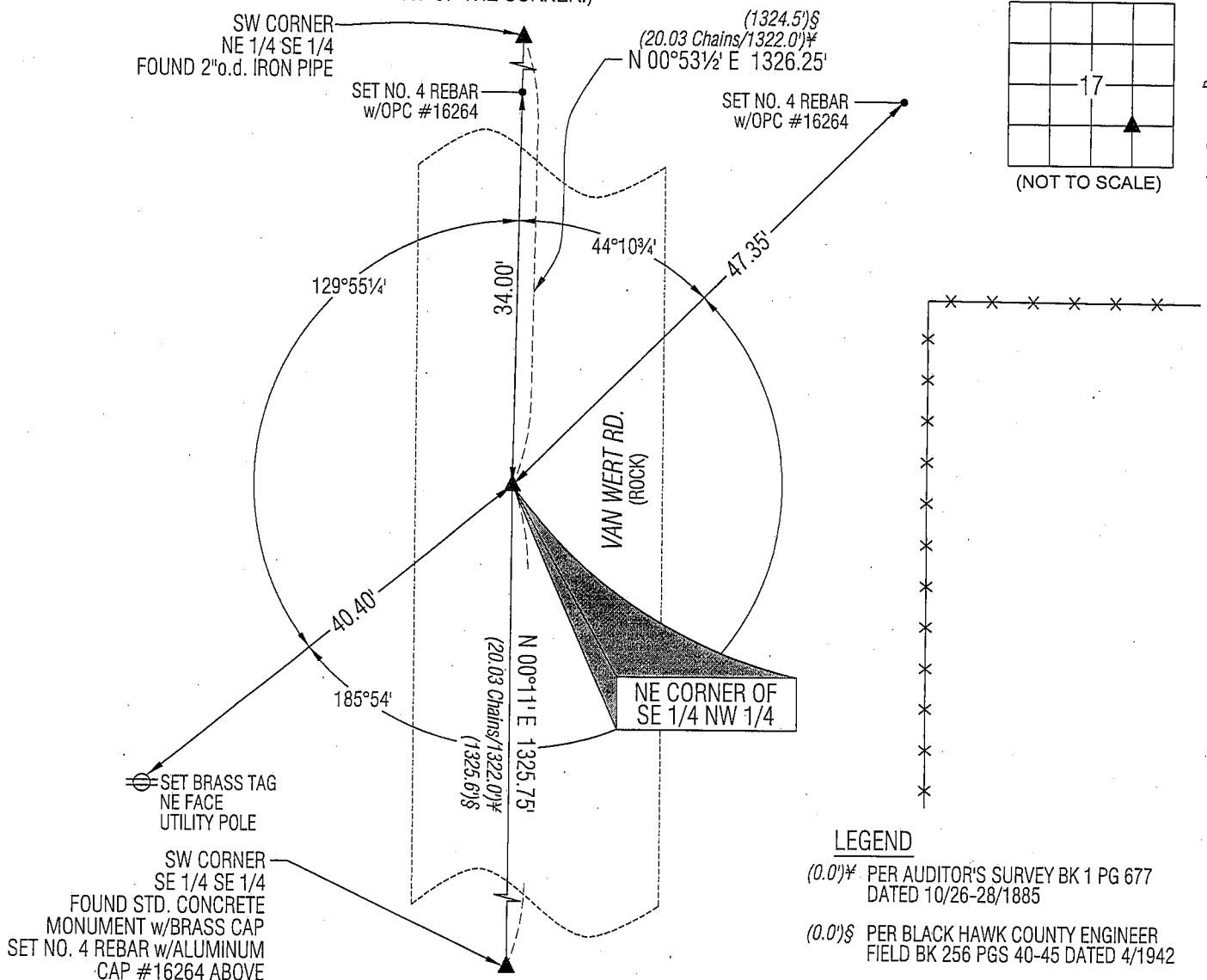
MONUMENT DESCRIPTION AND REMARKS:

NO USPLSCC ON FILE. SURVEY COMPLETED IN PART OF THE NE 1/4 SE 1/4 OF SEC. 17-T90N-R14W.

→ **NE CORNER SW 1/4 SE 1/4:** AUDITOR'S SURVEY BK 1 PG 677 DATED 10/26-28/1885 CALLS FOR [STONE & STAKE]. BLACK HAWK COUNTY ENGINEER FIELD BOOK #256 PG. 43 DATED APRIL 1942 CALLS FOR [1/4 - 1/4 LINE FOUND STONE SET IRON PIPE ON TOP.]. FOUND 2" O.D. OPEN PIPE 0.2' DEEP. SET "MAG" NAIL IN TOP CENTER OF PIPE.

PLAN VIEW

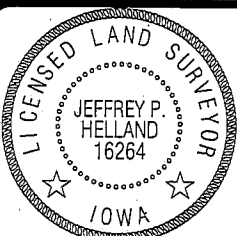
(SHOW A MINIMUM OF THREE REFERENCE TIES TO DURABLE PHYSICAL OBJECTS, RELEVANT MONUMENTS AND PHYSICAL CONDITIONS THAT WILL ENABLE RECOVERY OF THE CORNER.)



HELLAND ENGINEERING & SURVEYING, LTD.

1107 Technology Parkway
Cedar Falls, Iowa 50613-6951
(319)-266-0161

SHINER = 8D NAIL & 1 5/16"Ø METAL SHINER
BRASS TAG = 13/16"Ø BRASS TAG
OPC = PLASTIC CAP (O=ORANGE, R=RED, Y=YELLOW)
(00') RECORDED AS FILE NAME: 08-264C10.DWG



I hereby certify that this land surveying document was prepared and the related survey work was performed by me or under my direct personal supervision and that I am a duly licensed Land Surveyor under the laws of the State of Iowa.

Jeffrey P. Helland 9/23/08
Jeffrey P. Helland
License Number 16264
My license renewal date is December 31, 2009.
All pages or sheets are covered by this seal except:

LIST CORNERS TO BE INDEXED

| CORNER | SECTION | TOWNSHIP | RANGE |
|-----------------------|---------|----------|-------|
| NE COR. SW 1/4 SE 1/4 | 17 | 90N | 14W |
| SE COR. NW 1/4 SE 1/4 | 17 | 90N | 14W |
| SW COR. NE 1/4 SE 1/4 | 17 | 90N | 14W |
| NW COR. SE 1/4 SE 1/4 | 17 | 90N | 14W |

Rec.