

Recorded

UNITED STATES PUBLIC LAND SURVEY CORNER CERTIFICATE

OF

Survey Monuments situated in Section 17, Township 90, Range 14, of the Fifth Principal Meridian, BLACK HAWK County, Iowa.
Previously recorded in Book _____, Page _____.

(Show reason for preparing this certificate, the evidence and detailed procedures used in establishing the corner positions and monumentation found or placed.)

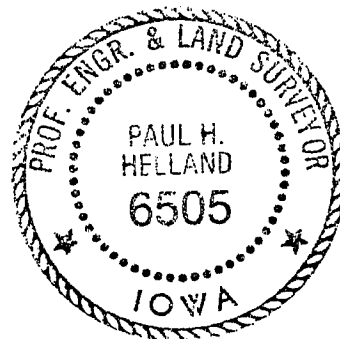
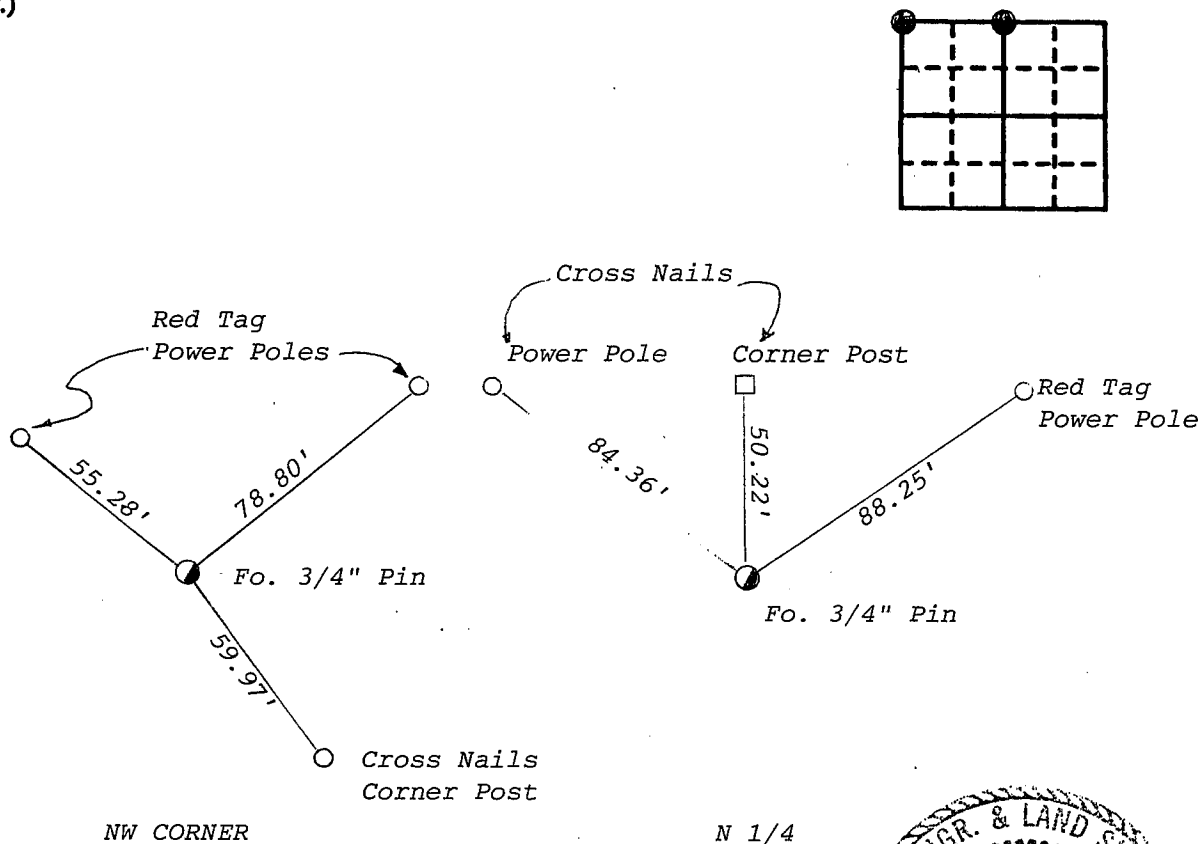
Monument Description and Remarks: SURVEY DONE IN N 1/2 NW 1/4

NW COR. - Found 3/4" Pin

N 1/4 - Found 3/4" Pin

PLAN - VIEW

(Show a minimum of three reference ties to durable physical objects, relevant monuments and physical conditions that will enable recovery of the corner.)



I hereby certify that the survey work was completed and this certificate was prepared by me or under my direct personal supervision and that I am a duly registered land surveyor under the laws of the state of Iowa.

Paul H. Helland 3/1/91

REGISTERED LAND SURVEYOR NO. 6505

List Corners to be Indexed

Corners	Section	Twp	Range
NW	17	90	14
N 1/4	17	90	14

SEAL

MISC. BK. 294 p. 938