

File **2013-00011528**

PREPARED BY: *BLACK HAWK COUNTY ENGINEERS OFFICE
316 E. FIFTH STREET, ROOM 211 WATERLOO, IOWA 50703

PH.# (319) 833-3008
FAX.# (319) 833-3139

SLSI 9-94
BHCO 03-09

Land Survey Monuments situated in Section 17 , Township 90 N ,
Range 14 W , of the Fifth Principal Meridian, BLACK HAWK County, Iowa.
Previously recorded in Misc Book 333 , Page 307 , in County Recorder's Office.

(Show reason for preparing this certificate): The corner monument has been Replaced or Modified, per Ia. Code 355.11(1)(c)

(Evidence and detailed procedures used in establishing the corner position(s) and monumentation found or placed.)

Monument Description and Remarks: **N.E. CORNER**

CORNER RESET & TIES UPDATED PER H.M.A. RESURF. PROJECT LFM-503--7X-07. PRIOR TO RESURF. PROJECT, FOUND NAIL ($\pm 20d$) PER CURRENT RECORD AND TEMP. REF. COR. LOCATION PER RTK GPS. AFTER 1.5" DEEP MILL & REFILL w/INTERMED. COURSE H.M.A., EXCAVATED TO $\pm 0.35'$ DEEP AND FOUND NAIL WITH TOP SHEARED OFF AND REMOVED WITH NO SOUNDING REMAINING @ LOCATION. AFTER ADDITIONAL 1.5" H.M.A. SURFACE COURSE, RESET CORNER WITH 5/8" (#5) x $\pm 7'L$ REBAR LOCATED @ $\pm 2.3'$ NORTH OF C.L. H.M.A. JOINT AND ALIGNED $\pm 2.0'$ WEST OF EXISTING FENCE LINE TO SOUTH.

"NOT TO SCALE"

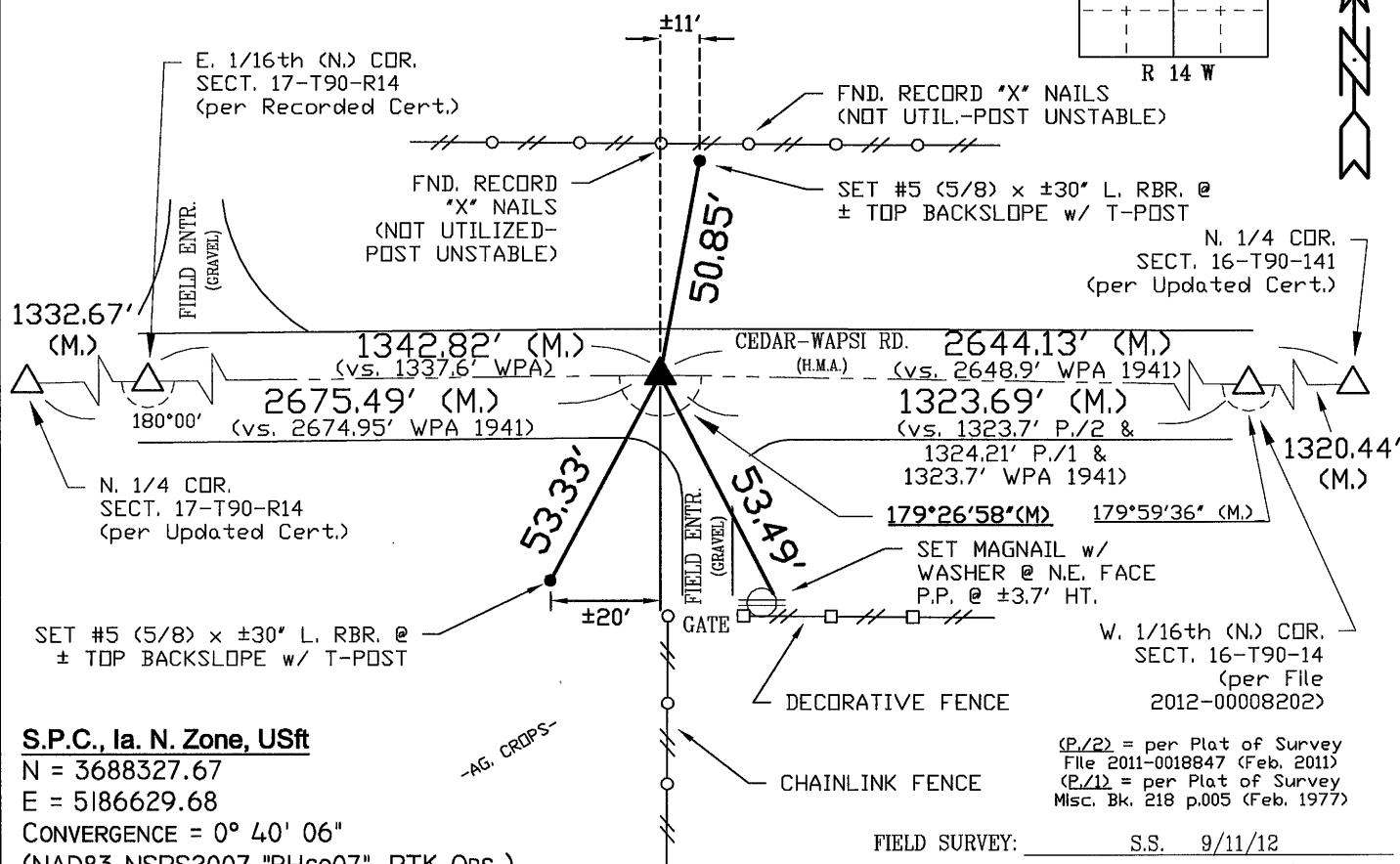
BHco Hist. Ties: BK. #1003 p. 17 T90-14

FIELD BOOK: Ties per Topcon 7003i #Z0115

(Show a minimum of three reference ties to durable physical objects, relevant monuments and physical conditions that will enable recovery of the corner.)

- 1.) TIES PER EDM MEASURE IN EITHER PRISM
"OR" NON-PRISM MODE, WHILE UTILIZING
"INDIRECT" MEASURE, WITH ALL DISTANCES
PLUMB/HORIZ. (HD), UNLESS DENOTED.

- 2.) SECTION LINE MEASURE REFERS TO "LOCAL GROUND" DIST. AND INCLUDES ELLIPSOID (COMBINED) SCALE FACTOR FROM S.P.C. GRID INVERSE (AS OBSERVED), PER AVG. SCALE FACTOR = 1.000093804492.



S.P.C., Ia. N. Zone, USft

$$N = 3688327.67$$
$$E = 5186629.68$$

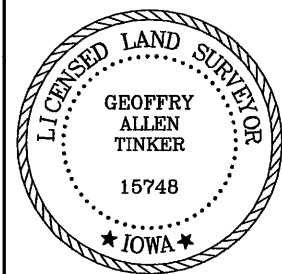
CONVERGENCE = $0^{\circ} 40' 06''$

(NAD83-NSRS2007 "BHco07", RTK OBS.)

FIELD SURVEY: S.S. 9/11/12

PREPARED BY: S.S. & G.T. 12/4/12

CERTIFICATION



I hereby certify that this land surveying document was prepared and the related survey work was performed by me or under my direct personal supervision and that I am a duly licensed Land Surveyor under the laws of the State of Iowa.

Geoffrey Allen Tinker 12/04/2012
Geoffrey Allen Tinker (date)

License Number 15748

My license renewal date is December 31, 2012

Pages or sheets covered by this seal:

This Land Corner Certificate Only.

LIST CORNERS TO BE INDEXED

<u>Corner</u>	<u>Section</u> -	<u>Township</u> -	<u>Range</u>
N.E. Cor.	17	90 N	14 W
N.W. Cor.	18	90 N	14 W
S.E. Cor.	8	90 N	14 W
S.W. Cor.	9	90 N	14 W

INDEX OF ABBREVIATIONS

(M) = "Measured" Dimension	"NP" = Reflectorless EDM Meas.
(P) = "Platted" Dimension	"MLM" = Indirect Measure
(R) = "Record" Dimension	"CM" = Concrete Monument
(C) = "Calculated" Dimension	"SM" = Survey Marker Spike/Tag
"GS" = Iowa Geodetic Survey	"PK" = PK/MAG Nail Brand Style
"WPA" = Works Progress Admin. Survey	
"Φ" = per George Miller Survey (BfCo Surveyor 1858-1860)	
"Δ" = per John Ball Survey (BfCo Surveyor 1866-1891)	
"δ" = per Nathan Barber Survey (BfCo Surveyor 1908-1931)	