

Doc ID: 004791570001 Type: GEN
Kind: CORNER
Recorded: 05/17/2012 at 02:24:01 PM
Fee Amt: \$7.00 Page 1 of 1
Black Hawk County Iowa
JUDITH A MCCARTHY RECORDER
File 2012-00021267

Paul H. Helland, 1107 Technology Parkway, Cedar Falls, Iowa 50613-6951, (319)-266-0161

UNITED STATES PUBLIC LAND SURVEY CORNER CERTIFICATE
OF

LAND SURVEY MONUMENTS SITUATED IN SECTION NO. 16, TOWNSHIP NO. 90 NORTH, RANGE
NO. 14 WEST OF THE FIFTH PRINCIPAL MERIDIAN, BLACK HAWK COUNTY, IOWA.
PREVIOUSLY RECORDED IN N/A

(SHOW REASON FOR PREPARING THIS CERTIFICATE, THE EVIDENCE AND DETAILED PROCEDURES USED IN ESTABLISHING THE
CORNER POSITIONS AND MONUMENTATION FOUND OR PLACED.)

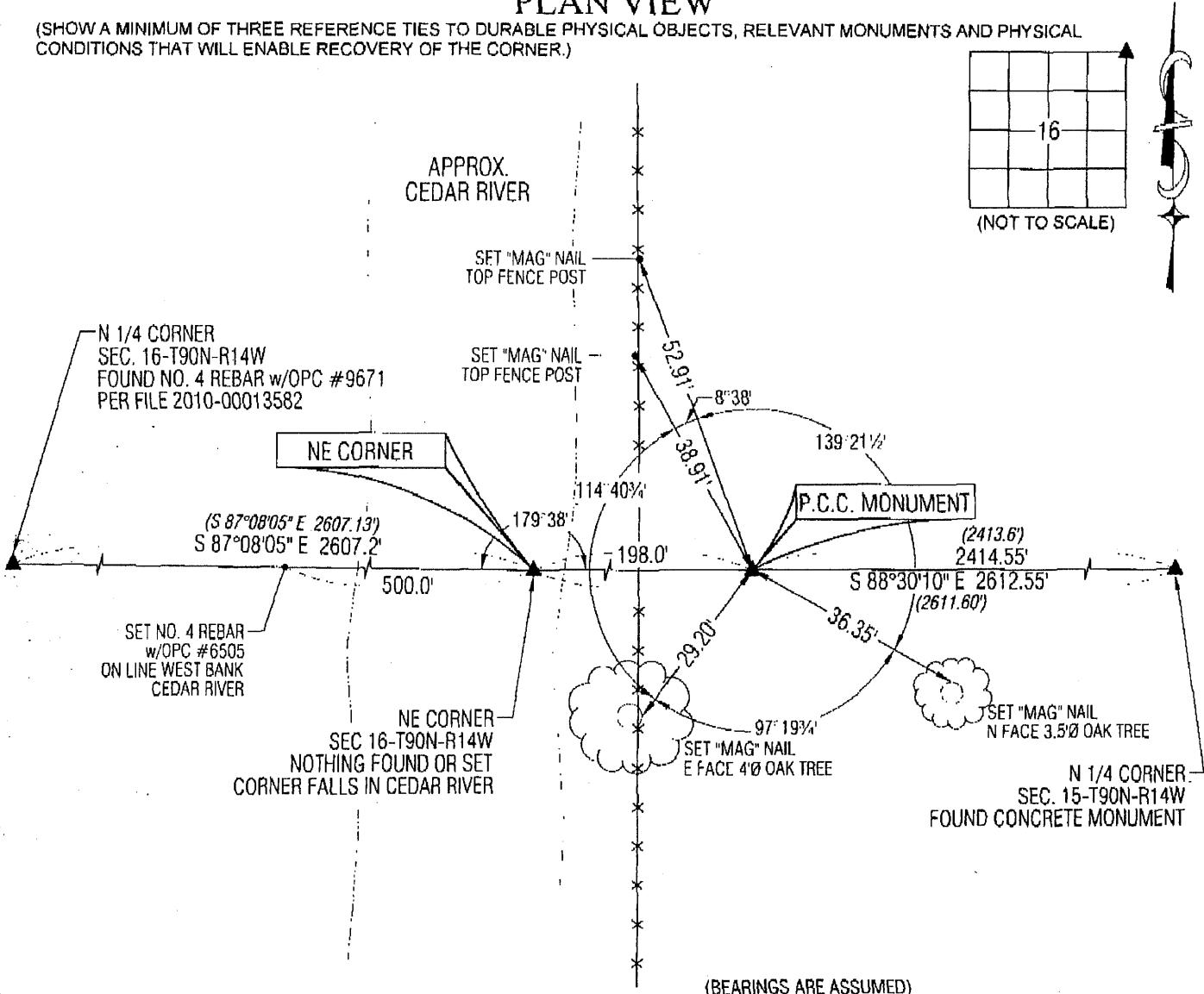
MONUMENT DESCRIPTION AND REMARKS:

NO USPLSCC ON FILE. ONLY ONE REFERENCE TIE REMAINS TO WITNESS MONUMENT, TOP FOOT OF THE CONCRETE
WITNESS MONUMENT WAS BROKEN OFF. SURVEY COMPLETED IN THE SE 1/4 OF SEC. 9-T90N-R14W.

NE CORNER WITNESS MONUMENT: WPA CHAINING NOTES BY YOUNGERMAN DATED 5/1/41 CALLS FOR (FOUND
WITNESS COR. LIMESTONE 22" x 10" x 4", ALSO BEARING TREES MARKED BY M.L. NEWTONS WHICH IS 198.0' E OF TRUE
CORNER, SET S.C.M. 2" UP). BASED OFF LONE REMAINING TIE, FOUND THE REMAINING LOWER PORTION OF THE CONCRETE
WITNESS MONUMENT 0.5' DEEP. SET 1/4" DRILL HOLE IN TOP CENTER. SET NO. 4 REBAR JUST NORTH OF MONUMENT FOR
MAGNETIC DETECTION. ACTUAL CORNER FALLS IN CEDAR RIVER.

PLAN VIEW

(SHOW A MINIMUM OF THREE REFERENCE TIES TO DURABLE PHYSICAL OBJECTS, RELEVANT MONUMENTS AND PHYSICAL
CONDITIONS THAT WILL ENABLE RECOVERY OF THE CORNER.)

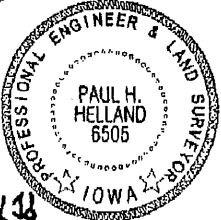


(BEARINGS ARE ASSUMED)



*HELLAND ENGINEERING & SURVEYING, LTD.
1107 Technology Parkway
Cedar Falls, Iowa 50613-6951
(319)-266-0161

SHINER = 8D NAIL & 1 5/16" Ø METAL SHINER
BRASS TAG = 8D NAIL & 13/16" Ø BRASS TAG
OPC = PLASTIC CAP (O=ORANGE, R=RED, Y=YELLOW)
(00) RECORDED AS FILE NAME: 12-126C1.DWG



I hereby certify that this land surveying document was prepared
and the related survey work was performed by me or under my
direct personal supervision and that I am a duly licensed Land
Surveyor under the laws of the State of Iowa.

Paul H. Helland
License Number 6505
My license renewal date is December 31, 2013.
All pages or sheets are covered by this seal except:

LIST CORNERS TO BE INDEXED

CORNER	SECTION	TOWNSHIP	RANGE
NE CORNER	16	90N	14W
SE CORNER	9	90N	14W
SW CORNER	10	90N	14W
NW CORNER	15	90N	14W

21-00 138
(7.66)

Rec