

PREPARED BY: *BLACK HAWK COUNTY ENGINEERS OFFICE
316 E. FIFTH STREET, ROOM 211 WATERLOO, IOWA 50703

PH.# (319) 833-3008
FAX.# (319) 833-3139

SLSI 9-94
BHCO 03-09

UNITED STATES PUBLIC LAND SURVEY CORNER CERTIFICATE OF
Land Survey Monuments situated in Section 16, Township 90 N,
Range 14 W, of the Fifth Principal Meridian, BLACK HAWK County, Iowa.
Previously recorded in File 2010, Page 13582, in County Recorder's Office.

(Show reason for preparing this certificate): The corner monument has been Replaced or Modified, per Ia. Code 355.11(1)(c)
(Evidence and detailed procedures used in establishing the corner position(s) and monumentation found or placed.)

Monument Description and Remarks: N. 1/4 CORNER
CORNER RESET & TIES UPDATED PER H.M.A. RESURF. PROJECT LFM-503--7X-07. PRIOR TO
RESURF. PROJECT, FOUND #4 (1/2") REBAR w/ ORANGE PLASTIC CAP #9671. PER CURRENT
RECORD AND TEMP. REF. COR. LOCATION PER RTK GPS. AFTER 1.5" DP. MILL & REFILL
w/INTERMED. COURSE H.M.A., RECORD #4 REBAR WITH CAP REMAINED INTACT AND STABLE.
ADDITIONAL 1.5" H.M.A. SURFACE COURSE COVERED EXISTING CORNER. AFTER RESURF.,
RESET CORNER WITH "MAG" NAIL & METAL WASHER OVER EXIST. #4 REBAR PER RTK GPS
REFERENCE. CORNER LOCATED (±) C.L. H.M.A. PAVING JOINT AND ALIGNED ±2.5' EAST OF
EXISTING FENCE LINE TO NORTH.

PLAN VIEW

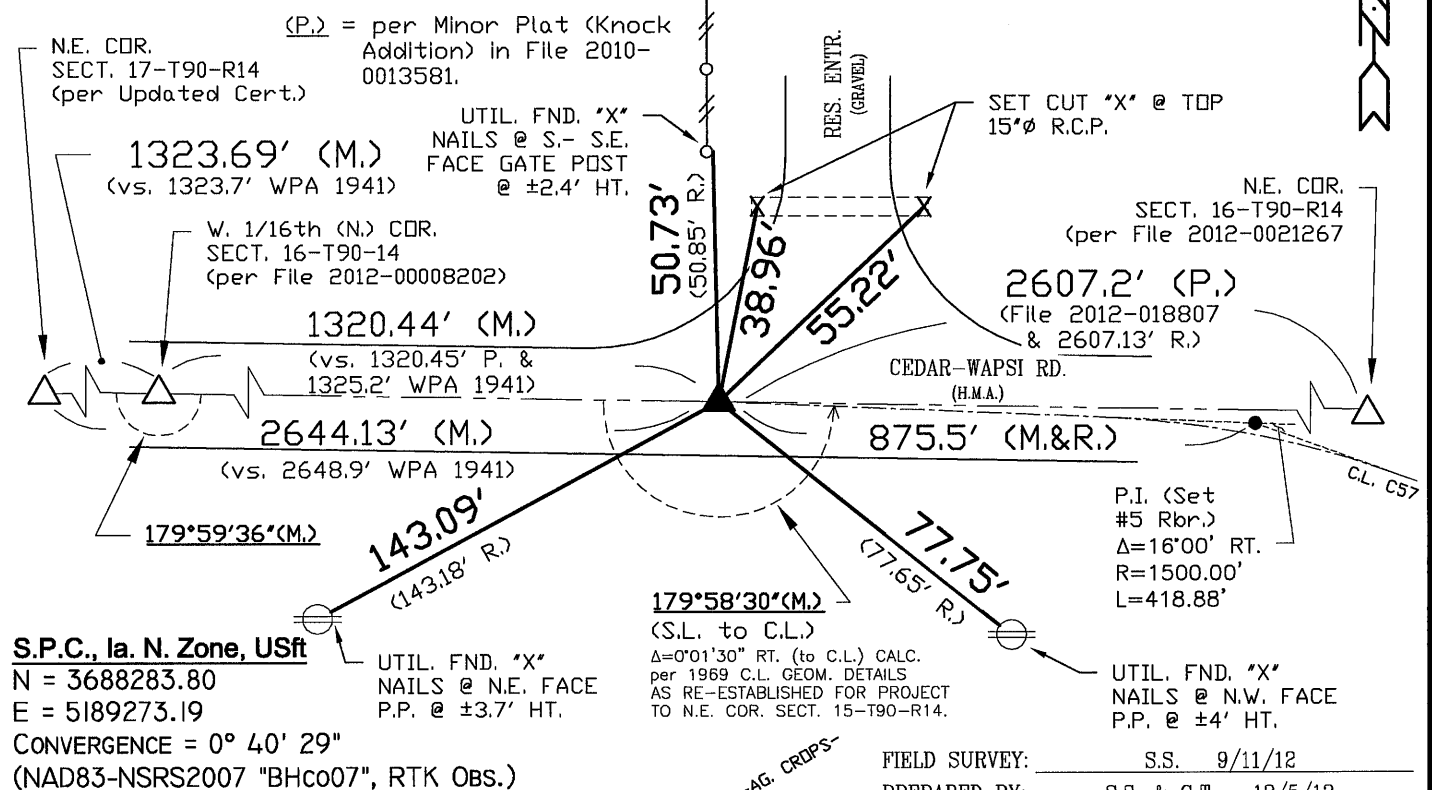
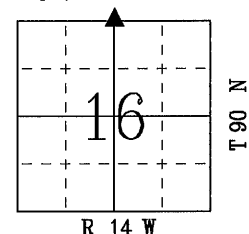
"NOT TO SCALE"

BHco Hist. Ties: BK. #1003 p. 16 T90-R14

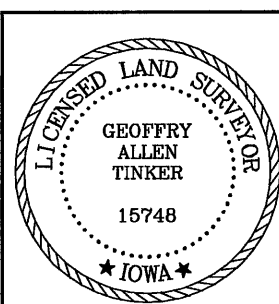
FIELD BOOK: Ties per Topcon 7003i #Z0115

(Show a minimum of three reference ties to durable physical objects, relevant monuments and physical conditions that will enable recovery of the corner.)

- 1.) TIES PER EDM MEASURE IN EITHER PRISM "OR" NON-PRISM MODE, WHILE UTILIZING "INDIRECT" MEASURE, WITH ALL DISTANCES PLUMB/HORIZ. (HD), UNLESS DENOTED.
- 2.) SECTION LINE MEASURE REFERS TO "LOCAL GROUND" DIST. AND INCLUDES ELLIPSOID (COMBINED) SCALE FACTOR FROM S.P.C. GRID INVERSE (AS OBSERVED), PER AVG. SCALE FACTOR = 1.000093804492.
- 3.) 1969 PLAN DISTANCE OF 875.5' FROM LAND CORNER TO EAST P.I. & 1961 PLAN DEFLECTION OF 16°00' RT. @ P.I. WERE "HELD" TO ESTABLISH P.I. EAST OF CORNER. NOTE P.I. IS "NOT" ON NORTH LINE OF N.E. 1/4 SECT. 16. REFER TO PLAT OF SURVEY PER FILE 2012-0018807 AND USPLSCC FOR N.E. CORNER SECT. 16 PER FILE 2012-0021267 FOR ADDITIONAL DETAILS.



CERTIFICATION



I hereby certify that this land surveying document was prepared and the related survey work was performed by me or under my direct personal supervision and that I am a duly licensed Land Surveyor under the laws of the State of Iowa.

Geoffrey Allen Tinker 12/05/2012
Geoffrey Allen Tinker (date)

License Number 15748

My license renewal date is December 31, 2012

Pages or sheets covered by this seal:

This Land Corner Certificate Only.

LIST CORNERS TO BE INDEXED

Corner	Section	Township	Range
N. 1/4 Cor.	16	90 N	14 W
S. 1/4 Cor.	9	90 N	14 W

INDEX OF ABBREVIATIONS

(M) = "Measured" Dimension	"NP" = Reflectorless EDM Meas.
(P) = "Platted" Dimension	"MLM" = Indirect Measure
(R) = "Record" Dimension	"CM" = Concrete Monument
(C) = "Calculated" Dimension	"SM" = Survey Marker Spike/Tag
"IGS" = Iowa Geodetic Survey	"PK" = PK/MAG Nail Brand Style
"WPA" = Works Progress Admin. Survey	
"G" = per George Miller Survey (BHco Surveyor 1858-1880)	
"B" = per John Ball Survey (BHco Surveyor 1886-1891)	
"N" = per Nathan Barber Survey (BHco Surveyor 1908-1931)	