

PREPARED BY: BLACK HAWK COUNTY ENGINEERS OFFICE
316 E. FIFTH STREET, ROOM 211 WATERLOO, IOWA 50703
PH.# (319) 833-3008 SLSI 9-94
FAX# (319) 833-3139 BHCO 03-09

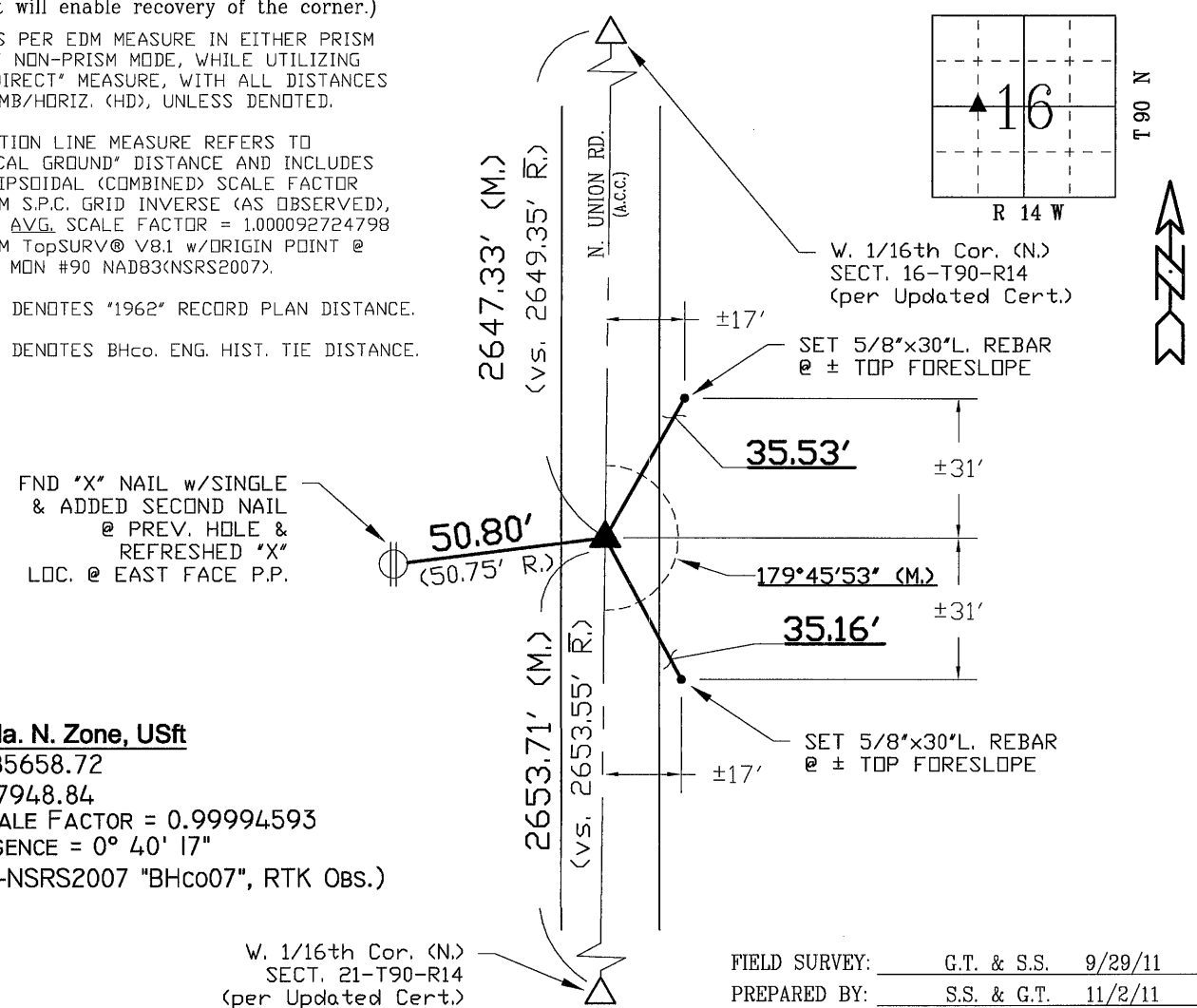
UNITED STATES PUBLIC LAND SURVEY CORNER CERTIFICATE OF
Land Survey Monuments situated in Section 16, Township 90 N, Range 14 W, of the Fifth Principal Meridian, BLACK HAWK County, Iowa.
Previously recorded in File Book N/A, Page N/A, in County Recorder's Office.
(Show reason for preparing this certificate): The corner monument has been Replaced or Modified, per Ia. Code 355.11(1)(c)
(Evidence and detailed procedures used in establishing the corner position(s) and monumentation found or placed.)
Monument Description and Remarks: N.E. COR. N.W.1/4-S.W.1/4
PRIOR TO H.M.A. RESURFACING PROJ. (#STP-S-C007(106)---5E-07), FOUND 5/8" REBAR WITH
NO CURRENT CORNER RECORD & TEMP. REF. PER RTK GPS. EXISTING B.H. CO. ENG. HIST.
TIES (HIST. STA. 250+70.65) DO NOT REFER TO MONUMENT DETAILS, w/ONE REMAINING TIE.
EXISTING A.C.C. MILLED -2". AFTER ACC MILLING, ALSO FOUND 1-1/2" METAL DISK w/16d
NAIL ALONG N-NE SIDE OF MTL. DISK LOCATED @ 0.60' DP. (AFTER MILLING), ORIG. #5
RBR. = ± 16d NAIL LOCATION AS FOUND, & HELD AS CORNER LOCATION. RESURFACED w/
+4" (2' INT. & 2" SURF.) H.M.A. PAVING. AFTER H.M.A. RESURFACE, RESET 5/8"x±7"L. (#5)
REBAR LOCATED AT ±0.40' EAST OF CENTERLINE PAVING. DEFL. (CORNER) ANGLE DENOTED
FOR 16th LINE TO N. & S. PER COGO OF RTK GPS MEAS. CORNERS (AS OBSERVED).

PLAN VIEW
"NOT TO SCALE"

BHco Hist. Ties: BK. #1003 p. "G" T90-R14
FIELD BOOK: Ties per Topcon 7003i #Z0115

(Show a minimum of three reference ties to durable physical objects, relevant monuments and physical conditions that will enable recovery of the corner.)

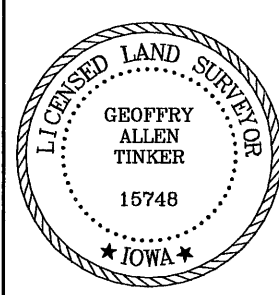
- 1.) TIES PER EDM MEASURE IN EITHER PRISM "OR" NON-PRISM MODE, WHILE UTILIZING "INDIRECT" MEASURE, WITH ALL DISTANCES PLUMB/HORIZ. (HD), UNLESS DENOTED.
- 2.) SECTION LINE MEASURE REFERS TO "LOCAL GROUND" DISTANCE AND INCLUDES ELLIPSOIDAL (COMBINED) SCALE FACTOR FROM S.P.C. GRID INVERSE (AS OBSERVED), PER AVG. SCALE FACTOR = 1.000092724798 FROM TopSURV® V8.1 w/ORIGIN POINT @ GPS MON #90 NAD83(NSRS2007).
- 3.) R̄. = DENOTES "1962" RECORD PLAN DISTANCE.
R. = DENOTES BHco. ENG. HIST. TIE DISTANCE.



S.P.C., Ia. N. Zone, USft
N = 3685658.72
E = 5187948.84
GRID SCALE FACTOR = 0.99994593
CONVERGENCE = 0° 40' 17"
(NAD83-NSRS2007 "BHco07", RTK Obs.)

FIELD SURVEY: G.T. & S.S. 9/29/11
PREPARED BY: S.S. & G.T. 11/2/11

CERTIFICATION



I hereby certify that this land surveying document was prepared and the related survey work was performed by me or under my direct personal supervision and that I am a duly licensed Land Surveyor under the laws of the State of Iowa.
Geoffrey Allen Tinker 11/02/2011
Geoffrey Allen Tinker (date)
License Number 15748
My license renewal date is December 31, 2012
Pages or sheets covered by this seal:
This Land Corner Certificate Only.

LIST CORNERS TO BE INDEXED

Corner	Section -	Township -	Range
N.E. Cor.	16	90 N	14 W
NW1/4-SW1/4			
= C.W. 1/16th	16	90 N	14 W

INDEX OF ABBREVIATIONS

- (M) = "Measured" Dimension
(P) = "Platted" Dimension
(R) = "Record" Dimension
(C) = "Calculated" Dimension
"IGS" = Iowa Geodetic Survey
"WPA" = Works Progress Admin. Survey
"G" = per George Miller Survey (BHco Surveyor 1858-1880)
"B" = per John Ball Survey (BHco Surveyor 1886-1891)
"N" = per Nathan Barber Survey (BHco Surveyor 1908-1931)
"NP" = Reflectorless EDM Meas.
"MLM" = Indirect Measure
"CM" = Concrete Monument
"SM" = Survey Marker Spike/Tag
"PK" = PK/MAG Nail Brand Style