

Jeffrey P. Helland, 1107 Technology Parkway, Cedar Falls, Iowa 50613-6951, (319)-266-0161

# UNITED STATES PUBLIC LAND SURVEY CORNER CERTIFICATE OF

LAND SURVEY MONUMENTS SITUATED IN SECTION NO. 15, TOWNSHIP NO. 90 NORTH, RANGE NO. 14 WEST OF THE FIFTH PRINCIPAL MERIDIAN, BLACK HAWK COUNTY, IOWA.  
PREVIOUSLY RECORDED IN MISC. BOOK 299 PAGE 599

(SHOW REASON FOR PREPARING THIS CERTIFICATE, THE EVIDENCE AND DETAILED PROCEDURES USED IN ESTABLISHING THE CORNER POSITIONS AND MONUMENTATION FOUND OR PLACED.)

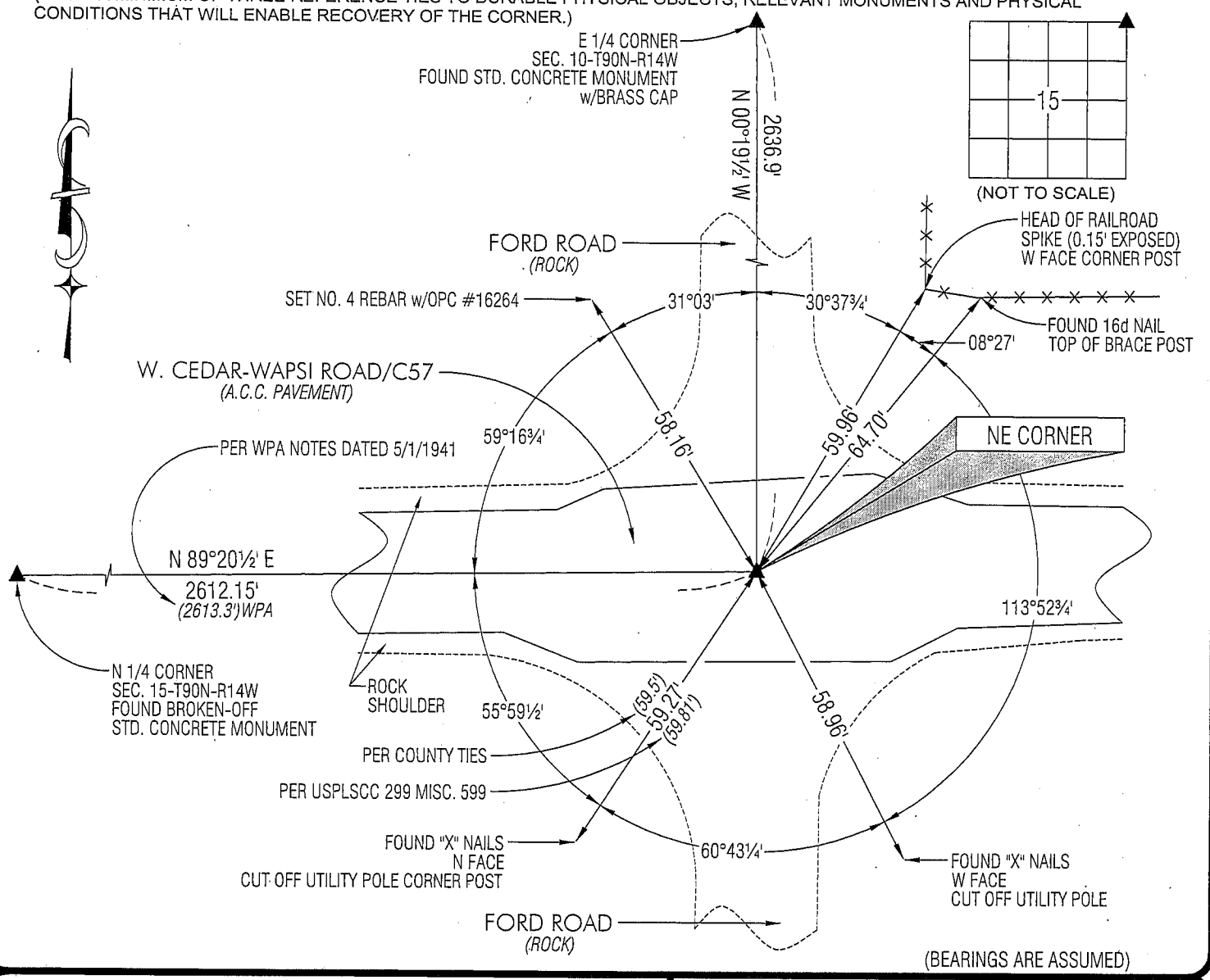
## MONUMENT DESCRIPTION AND REMARKS:

USPLSCC MISC. BOOK 299 PAGE 599 REFERENCE TIES HAVE CHANGED. SURVEY COMPLETED IN THE SE 1/4 OF SEC. 10-T90N-R14W.

NE CORNER: BLACK HAWK COUNTY ENGINEER REFERENCE TIES (NO DATE) CALLS FOR [SET STD. CONCRETE MONUMENT w/BRASS CAP]. USPLSCC MISC. BOOK 299 PAGE 599 DATED 12/31/1991 CALLS FOR [FOUND PIN]. FOUND 5/8"Ø REBAR IN A.C.C. PAVEMENT CORRESPONDING TO POSITION PER SAID MISC. BOOK 299 PAGE 599.

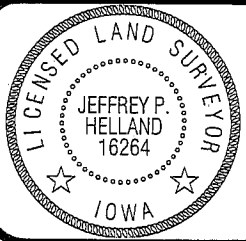
## PLAN VIEW

(SHOW A MINIMUM OF THREE REFERENCE TIES TO DURABLE PHYSICAL OBJECTS, RELEVANT MONUMENTS AND PHYSICAL CONDITIONS THAT WILL ENABLE RECOVERY OF THE CORNER.)



HELLAND ENGINEERING & SURVEYING, LTD.  
1107 Technology Parkway  
Cedar Falls, Iowa 50613-6951  
(319)-266-0161

SHINER = 8D NAIL & 1 5/16"Ø METAL SHINER  
BRASS TAG = 8D NAIL & 13/16"Ø BRASS TAG  
OPC = PLASTIC CAP (O=ORANGE, R=RED, Y=YELLOW)  
(00') RECORDED AS FILE NAME: 10-178C1.DWG



I hereby certify that this land surveying document was prepared and the related survey work was performed by me or under my direct personal supervision and that I am a duly licensed Land Surveyor under the laws of the State of Iowa.  
*Jeffrey P. Helland 6/15/10*  
Jeffrey P. Helland  
License Number 16264  
My license renewal date is December 31, 2011.  
All pages or sheets are covered by this seal except:

LIST CORNERS TO BE INDEXED			
CORNER	SECTION	TOWNSHIP	RANGE
NE CORNER	15	90N	14W
SE CORNER	10	90N	14W
SW CORNER	11	90N	14W
NW CORNER	14	90N	14W

9.08

Rec.!