

Jeffrey P. Helland, 1107 Technology Parkway, Cedar Falls, Iowa 50613-6951, (319)-266-0161

UNITED STATES PUBLIC LAND SURVEY CORNER CERTIFICATE OF

LAND SURVEY MONUMENTS SITUATED IN SECTION NO. 15, TOWNSHIP NO. 90 NORTH, RANGE
NO. 14 WEST OF THE FIFTH PRINCIPAL MERIDIAN, BLACK HAWK COUNTY, IOWA.
PREVIOUSLY RECORDED IN N/A

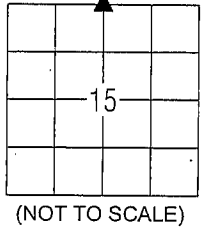
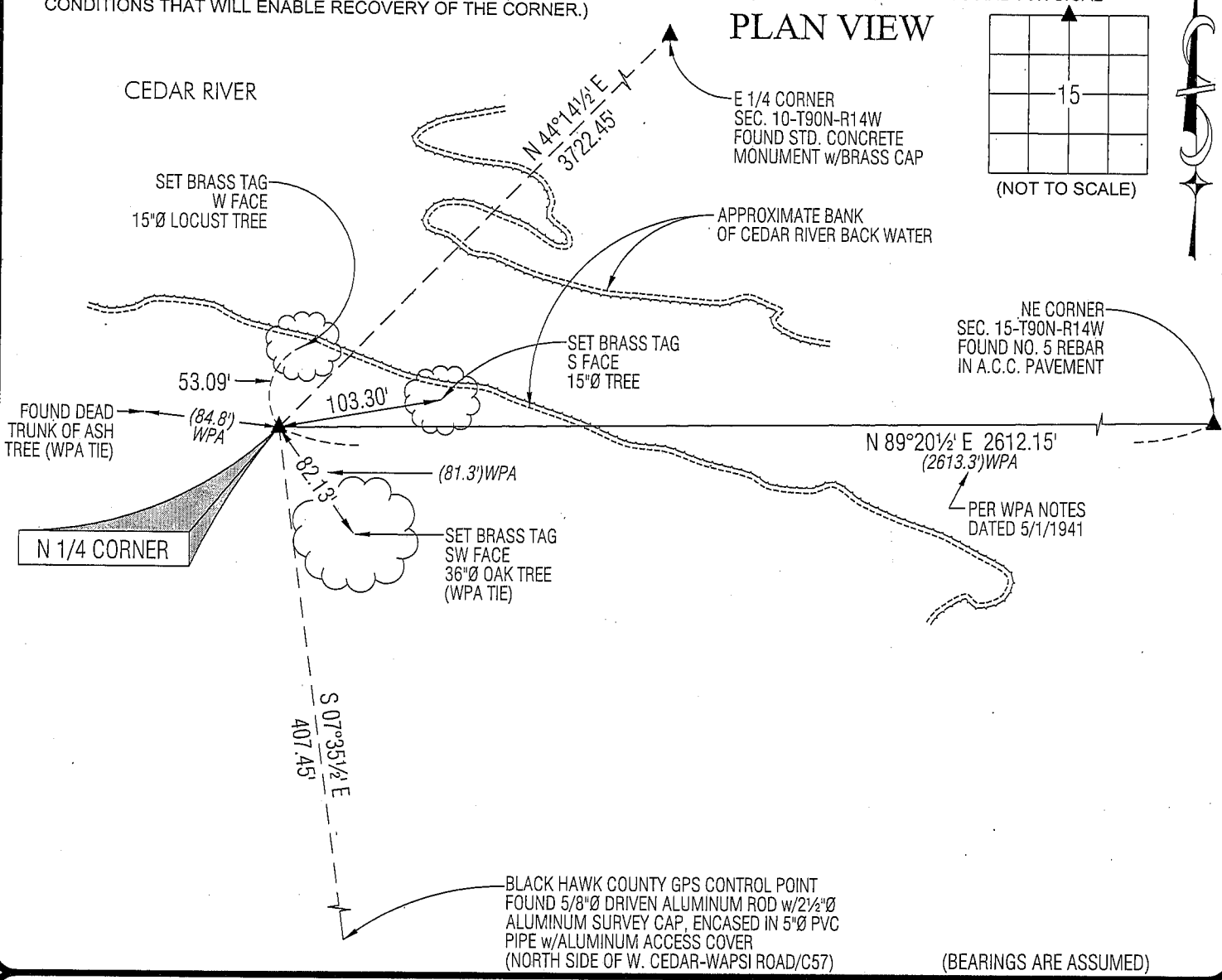
(SHOW REASON FOR PREPARING THIS CERTIFICATE, THE EVIDENCE AND DETAILED PROCEDURES USED IN ESTABLISHING THE
CORNER POSITIONS AND MONUMENTATION FOUND OR PLACED.)

MONUMENT DESCRIPTION AND REMARKS:

NO USPLSCC ON FILE. SURVEY COMPLETED IN THE SE 1/4 OF SEC. 10-T90N-R14W.
N 1/4 CORNER: BLACK HAWK COUNTY ENGINEER WPA NOTES (DATED 5/1/1941) CALLS FOR [FOUND NOTHING, EST. COR.
ON STRAIGHT LINE BTWN NE 15 & WITNESS COR. AT NW 15, & PRORATED DISTANCE. 26+13.3 W. OF NE 15, & 24+16.0 E.
OF WIT. CORNER, ACCORDING TO THE GOV. SURVEY RECORDS. NO RECORD OF STONE HERE. FOUND WHAT LOOKS LIKE
ROTTEN ROOTS OF ORIGINAL BEARING TREE N 68° E 9.2']. SAID NOTES ALSO STATE [TOP BROKEN OFF 0.6' UNDERGROUND
APRIL 1959]. UTILIZING WPA DISTANCE FROM NE CORNER OF SEC. 15 AND TWO REMAINING TIE TREES FOUND BROKEN OFF
BASE OF STANDARD CONCRETE MONUMENT, ALSO FOUND 0.4'± SECTION OF BROKEN OFF CONCRETE MONUMENT ABOVE
BASE (DISCARDED). TOP OF SAID MONUMENT IS 1'± DEEP. SET NO. 4 REBAR (FLUSH w/TOP) ON NORTH SIDE OF SAID
MONUMENT FOR MAGNETIC DETECTION. NO. 4 REBAR IS 0.20' NORTH OF POINT UTILIZED ON SAID MONUMENT.

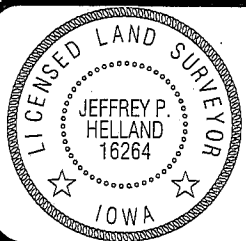
(SHOW A MINIMUM OF THREE REFERENCE TIES TO DURABLE PHYSICAL OBJECTS, RELEVANT MONUMENTS AND PHYSICAL
CONDITIONS THAT WILL ENABLE RECOVERY OF THE CORNER.)

PLAN VIEW



HES HELLAND ENGINEERING & SURVEYING, LTD.
1107 Technology Parkway
Cedar Falls, Iowa 50613-6951
(319)-266-0161

SHINER = 8D NAIL & 1 5/16"Ø METAL SHINER
BRASS TAG = 8D NAIL & 13/16"Ø BRASS TAG
OPC = PLASTIC CAP (O=ORANGE, R=RED, Y=YELLOW)
(00') RECORDED AS FILE NAME: 10-178C2.DWG



I hereby certify that this land surveying document was prepared
and the related survey work was performed by me or under my
direct personal supervision and that I am a duly licensed Land
Surveyor under the laws of the State of Iowa.
Jeffrey P. Helland 6/15/10
Jeffrey P. Helland
License Number 16264
My license renewal date is December 31, 2011.
All pages or sheets are covered by this seal except:

LIST CORNERS TO BE INDEXED			
CORNER	SECTION	TOWNSHIP	RANGE
N 1/4 CORNER	15	90N	14W
S 1/4 CORNER	10	90N	14W