

**U.S. (IA.) PUBLIC LAND SURVEY
CORNER CERTIFICATE** (Ia. 355.11)
B.H. Co. PROJECT: LAND CORNER PRESERV.

CEDAR WAPSI (C57) BRIDGE REPLACEMENT PROJECT (595)
(DESCRIPTION OF PROJECT / CORNER USE REFERENCE)

INDEX OF ABBREVIATIONS

(M) = "Measured" Dimension
(P) = "Platted" Dimension
(R) = "Record" Dimension
(C) = "Calculated" Dimension
"IGS" = Iowa Geodetic Survey
"WPA" = Works Progress Admin. Surveys (late 1930's to early 1940's)
"G" = per George Miller Survey (BHco Surveyor 1858-1860)
"B" = per John Ball Survey (BHco Surveyor 1866-1891)
"N" = per Nathan Barber Survey (BHco Surveyor 1908-1931)
"NP" = Reflectorless EDM Meas
"MLM" = Indirect Measure
"CM" = Concrete Monument
"SM" = Survey Marker Spike/Tag
"PK" = PK/MAG Nail Brand Style



Doc ID: 008398510001 Type: GEN
Recorded: 05/15/2018 at 12:30:45 PM
Fee Amt: \$0.00 Page 1 of 1
Black Hawk County Iowa
SANDIE L. SMITH RECORDER

File **2018-00018598**

Land Survey Monument(s) situated in Section 15, Township 90 N., Range 14 W., of the Fifth Principal Meridian (5th P.M.), **BLACK HAWK** County, Iowa.

Previously recorded in FILE Book N/A, Page N/A, in County Recorder's Office.
(Show reason for preparing this certificate): **There is No Certificate for the corner on file with County Recorder, per Ia. Code 355.11(1)(a).**

(Evidence and detailed procedures used in establishing the corner position(s) and monumentation found or placed.)

Monument Description and Remarks: **EAST 1/4 CORNER:**

FOUND #4 (1/2") REBAR (IRON BAR / I.B.) @ ±4" DEEP LOCATED ±7' WEST OF EAST EDGE OF FORD ROAD. CORNER ALIGNED w/ FENCE LINE TO THE EAST, AND ±4' NORTH OF FENCE LINE TO THE WEST. NO WPA COR. TIES REMAIN (dtd. 08/28/1940), WITH SAME WPA TIES REFERENCED PER COUNTY ENGINEER TIES IN BOOK #1003 (DEC. 1958). NO CURRENT LAND COR. CERT. ON FILE, YET CORNER WAS PREV. REFERENCED (USED) PER "PLAT OF SURVEY" IN MISC. BK. #345 p.931. CORNER UTILIZED FOR RECOVERY OF CENTER SAID SECTION, FROM A 1966 UNRECORDED CONSERVATION SURVEY. SEE FILE 2018-00016900 FOR FURTHER DETAILS REGARDING 1/4 LINE TO WEST.

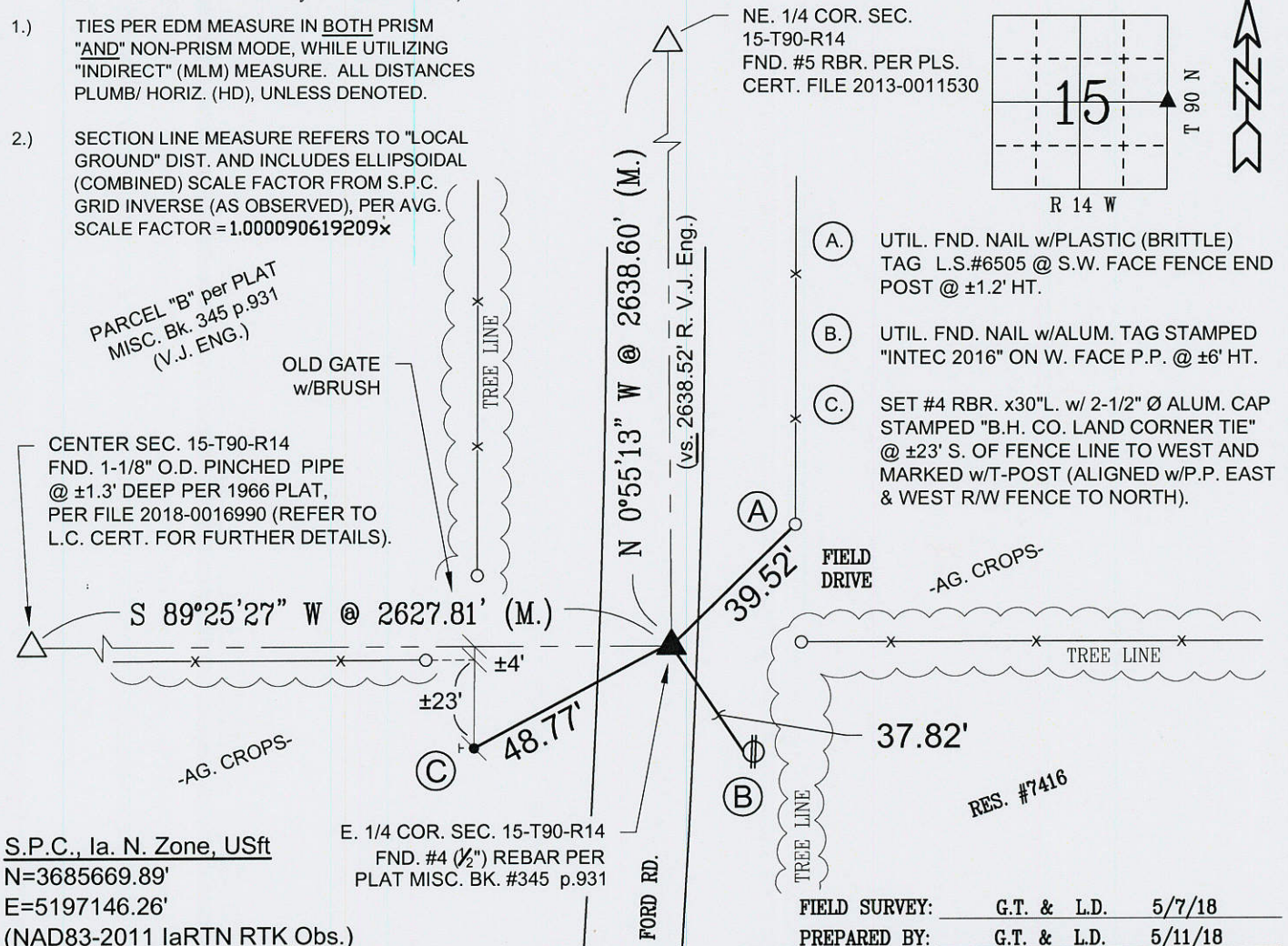
Software: **TopSurv v.8.2.3 w/FC-2500**
Proj. Dept.#: **595** Point ID: **#8051**

PLAN VIEW
"NOT TO SCALE"

BHco Eng. Ties: **BK. #1003 p.15 90-14**
FIELD BOOK: **BHcoIA. Eng. #474 p.068**

(Show a minimum of three reference ties to durable physical objects, relevant monuments and physical conditions that will enable recovery of the corner.)

- 1.) TIES PER EDM MEASURE IN BOTH PRISM "AND" NON-PRISM MODE, WHILE UTILIZING "INDIRECT" (MLM) MEASURE. ALL DISTANCES PLUMB/ HORIZ. (HD), UNLESS DENOTED.
- 2.) SECTION LINE MEASURE REFERS TO "LOCAL GROUND" DIST. AND INCLUDES ELLIPSOIDAL (COMBINED) SCALE FACTOR FROM S.P.C. GRID INVERSE (AS OBSERVED), PER AVG. SCALE FACTOR = 1.000090619209x



CERTIFICATION

I hereby certify that this land surveying document was prepared and the related survey work was performed by me or under my direct personal supervision and that I am a duly licensed Land Surveyor under the laws of the State of Iowa.

Geoffry Allen Tinker 05/15/18
(date)

License Number **15748**

My license renewal date is December 31, **2018**

Pages or sheets covered by this seal:
This Land Corner Certificate Only.

LIST CORNERS TO BE INDEXED

Corner	Section	Township	Range
E. 1/4 Cor.	15	90 N	14 W
W. 1/4 Cor.	14	90 N	14 W

PREPARED BY:
BLACK HAWK COUNTY
ENGINEER'S DEPT.
316 E. FIFTH ST. RM 211
WATERLOO, IA. 50703
PH 319-833-3008
FAX 319-833-3159
surveyor@co.black-hawk-ia.us