

U.S. (IA.) PUBLIC LAND SURVEY  
CORNER CERTIFICATE (Ia. 355.11)

B.H. Co. PROJECT: 595

CEDAR WAPSI BRIDGE REPLACEMENT PROJECT (#76820)

RIGHT-OF-WAY ACQUISITION PLATS

INDEX OF ABBREVIATIONS

(M) = "Measured" Dimension  
(P) = "Platted" Dimension  
(R) = "Record" Dimension  
(C) = "Calculated" Dimension  
"IGS" = Iowa Geodetic Survey  
"WPA" = Works Progress Admin. Surveys (late 1930's to early 1940's)  
"G" = per George Miller Survey (BHco Surveyor 1858-1860)  
"B" = per John Ball Survey (BHco Surveyor 1866-1891)  
"N" = per Nathan Barber Survey (BHco Surveyor 1908-1931)  
"NP" = Reflectorless EDM Meas  
"MLM" = Indirect Measure  
"CM" = Concrete Monument  
"SM" = Survey Marker Spike/Tag  
"PK" = PK/MAG Nail Brand Style



Doc ID: 008378470002 Type: GEN  
Recorded: 04/19/2018 at 03:36:23 PM  
Fee Amt: \$0.00 Page 1 of 2  
Black Hawk County Iowa  
SANDIE L. SMITH RECORDER

File 2018-00016990

Land Survey Monument(s) situated in Section 15, Township 90 N., Range 14 W., of the Fifth Principal Meridian (5th P.M.), BLACK HAWK County, Iowa.

Previously recorded in FILE Book N/A, Page N/A, in County Recorder's Office.

(Show reason for preparing this certificate): There is No Certificate for the corner on file with County Recorder, per Ia. Code 355.11(1)(a).

(Evidence and detailed procedures used in establishing the corner position(s) and monumentation found or placed.)

Monument Description and Remarks: CENTER SECT.:

OBTAINED COPY OF 1966 (dtd. 4/27/1966) PLAT OF SURVEY FOR BHCO. CONSERVATION (SEE p.#2 FOR COPY ATTACHED OF HISTORICAL REFERENCE) SURVEY IN PART OF SECTION 15 & 22, T90N, R14W, AS REFERENCED IN P.L.S. #12088 PLAT PER MISC. Bk. #345 p. 931 (dtd. 3/6/2002). FOUND 1-1/8" O.D. PINCHED PIPE @ ±1.3' DEEP AND RECOVERED CENTER USING FOUND TRACT CORNER @ 462' WEST. LAND CORNERS AND PARCEL TRACT CORNERS USED FOR GEOM. TIES, AS HEREIN DETAILED, WITH NO AREA TIES TO REFERENCE. SET MTL. "T" POST @ NORTH OF FOUND CENTER FOR REFERENCE.

PAGE #1 of 2

Software: TopSurv v.8.2.3 w/FC-2500

Proj. Dept.#: 595 Point ID: #711

PLAN VIEW

"NOT TO SCALE"

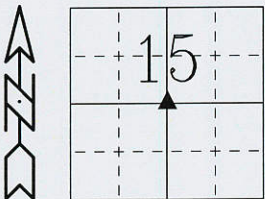
BHco Eng. Ties: 595\_S\_ACQS.dwg

FIELD BOOK: (N/A)

(Show a minimum of three reference ties to durable physical objects, relevant monuments and physical conditions that will enable recovery of the corner.)

- 1.) TIES PER NETWORK RTK (N/RTK) MEASURE, WITH ALL DISTANCES PLUMB/HORIZ. (HD), UNLESS DENOTED.
- 2.) SECTION LINE MEASURE REFERS TO "LOCAL GROUND" DIST. AND INCLUDES ELLIPSOIDAL (COMBINED) SCALE FACTOR FROM S.P.C. GRID INVERSE (AS OBSERVED), PER AVG. SCALE FACTOR = 1.000090619209x

FND. SML. MTL. T-POST  
w/ 1"Ø SHINNER RLS.  
#8034 C.E. McCALL @  
0.90' E. OF 1/4 LINE OBS.



R 14 W

BACKWATER

S 89°18'49" W  
@ 462.0' (M.)  
(vs. 462' R. 1966)

N 0°30'08" E  
@ 661.08' (M.)

N 0°34'50" W  
@ 2634.74' (M.)

N 89°20'26" E  
@ 2612.16' (M.)  
(vs. N 89°20'30" E  
@ 2612.15' R. H.E.S.)

89°40'19" (M.)  
vs. 89°40'17" (P.)

S 89°25'27" W  
@ 2627.81' (M.)

S 89°24'28" W  
@ 3089.80' (M.)  
(vs. 3089.95' R.)

REFERENCE (ONLY)  
TO RECORD 5/8" RBR.  
PLS. #12088 PER  
MISC. Bk. 345 p.931

E. 1/4 COR. SEC. 15-T90-R14  
FND. #4 I.B. PER PLAT  
MISC. Bk. #345 p.931 (NO  
CURRENT CERT. ON FILE)

N 0°55'13" W @ 2638.60' (M.)  
(vs. 2638.52' R. V.J.)

S.P.C., Ia. N. Zone, USft

N=3685643.29'

E=5194518.98'

(NAD83-2011 IaRTN RTK Obs.)

CENTER SECT. 15-T90-R14

FND. 1-1/8" O.D. PINCHED  
PIPE @ ±1.3' DP. PER  
1966 PLAT (Ref. p.#2)

FIELD SURVEY: G.T. & L.D. 04/12/18

PREPARED BY: G.T. & L.D. 4/18/18

CERTIFICATION

I hereby certify that this land surveying document was prepared and the related survey work was performed by me or under my direct personal supervision and that I am a duly licensed Land Surveyor under the laws of the State of Iowa.

*Geoffry Allen Tinker* 04/18/18  
Geoffry Allen Tinker (date)  
License Number 15748  
My license renewal date is December 31, 2018  
Pages or sheets covered by this seal:  
This Land Corner Certificate Only.

LIST CORNERS TO BE INDEXED

Corner	Section	Township	Range
CENTER	15	90 N	14 W



PREPARED BY:  
BLACK HAWK COUNTY  
ENGINEER'S DEPT.  
316 E. FIFTH ST. RM. 211  
WATERLOO, IA. 50703  
PH. 319-833-3008  
FAX. 319-833-3139  
surveyor@co.black-hawk.ia.us



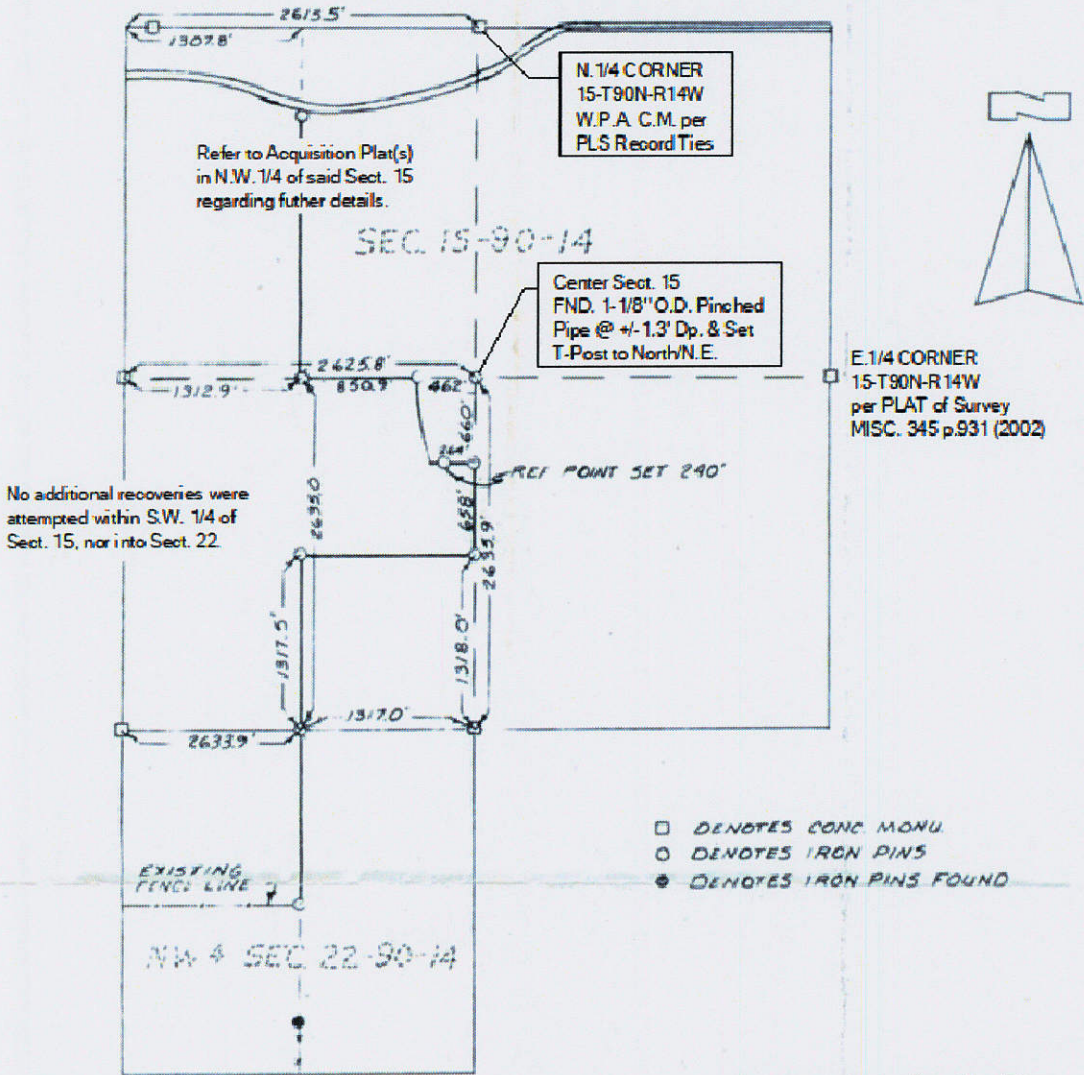
U.S. (IA.) PUBLIC LAND SURVEY *SCALE:*  
CORNER CERTIFICATE (CONT.)

B.H. Co. PROJECT: 595  
CEDAR WAPSI BRIDGE REPLACEMENT PROJECT (#76820)  
RIGHT-OF-WAY ACQUISITION PLAT(S) LAND CORNER TIES

FIELD SURVEY: G.T. & L.D. 04/12/2018  
PREPARED BY: G. TINKER 4/19/18

PAGE #2 of 2  
of Land Cor. Cert.  
as detailed on p.#1

for HISTORICAL Reference ONLY (Unrecorded)  
provided by V.J. Engineering (PLS #12088) per  
email dtd. Tuesday, April 10, 2018 9:08 AM



PLAN VIEW  
"NOT TO SCALE"

PLAT OF SURVEY  
PART OF SECTION 15 AND 22  
T-90N, R-14W, 5TH. P.M.  
PLAT AND SURVEY BY WAYNE CLAASSEN  
ENGINEERING AND LAND SURVEYING INC.  
SCALE 1"=1000' DATE: 4-27-66

**SURVEYOR'S NOTES:**

- 1.) UNRECORDED SURVEY, provided for reference to Center Section 15-T90-R14 as found and tied as part of associated Land Corner Certificate (p.#1) instrument.

x.P.C. denotes "Color" Plastic Cap w/PLS#  
P=Pink Y=Yellow O=Orange R=Red B=Blue



**PREPARED BY**  
**Governmental Entity:**  
BLACK HAWK COUNTY  
ENGINEER'S DEPT.  
316 E. FIFTH ST. RM. 211  
WATERLOO, IA. 50703  
PH. 319-833-3008  
FAX. 319-833-3139  
surveyor@co.black-hawk.ia.us