



Doc ID: 010224440001 Type: GEN
Recorded: 07/28/2021 at 04:08:59 PM
Fee Amt: \$7.00 Page 1 of 1
Black Hawk County Iowa
SANDIE L. SMITH RECORDER

File **2022-00002192**ENV
x

WAYNE CLAASSEN ENGINEERING AND SURVEYING, INC.
P.O. BOX 898 WATERLOO, IOWA 50704-0898

PHONE: (VOICE) 319-235-6294
(FAX) 319-235-0028

UNITED STATES PUBLIC LAND SURVEY CORNER CERTIFICATE

Land Survey Monuments situated in Section 14, Township 90 North, Range 14 West, of the Fifth Principal Meridian, Black Hawk County, Iowa.

Previously recorded in _____ in County Recorder's Office.
(book, page, document number, etc.)

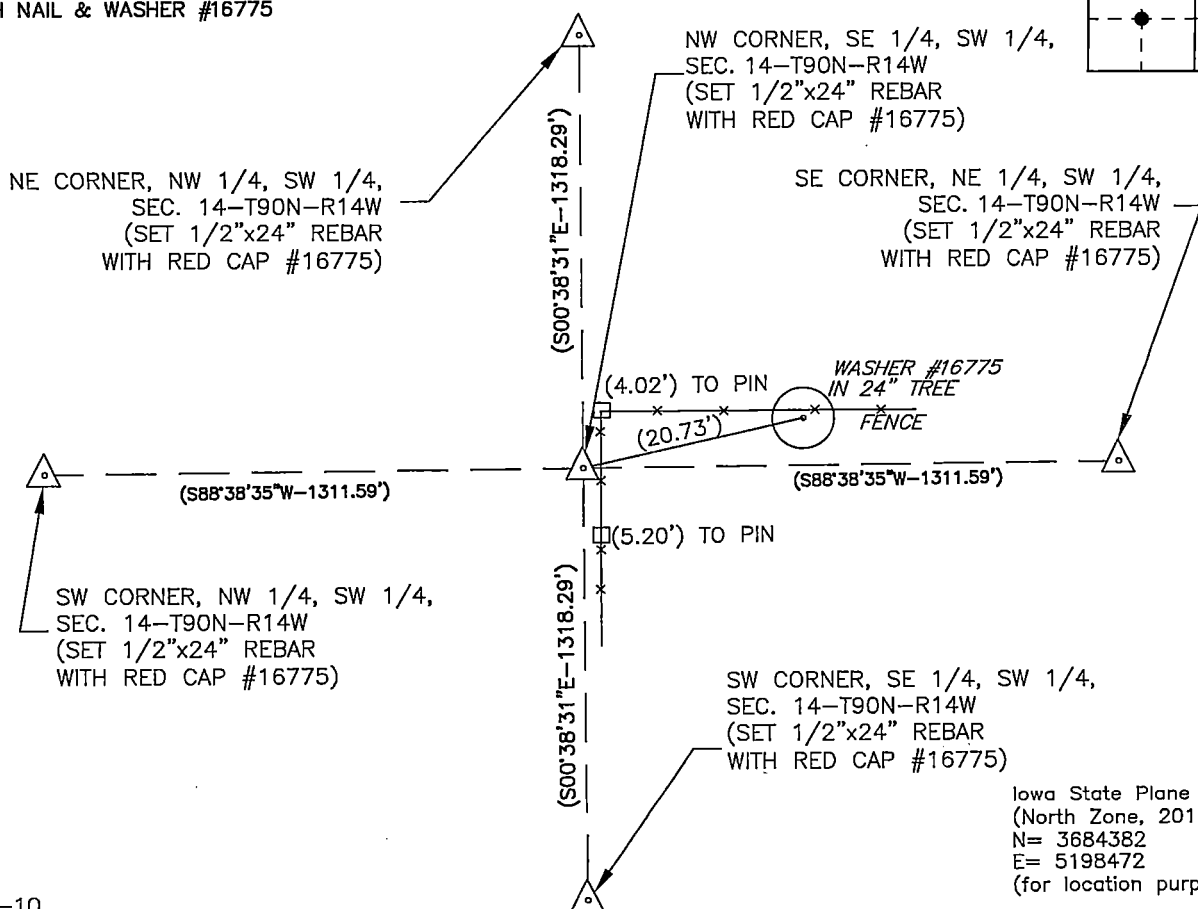
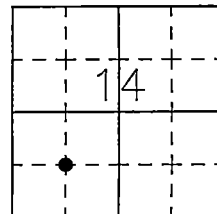
Monument Description and Remarks

Set 1/2"x24" iron pin and red cap #16775 at intersection of opposite 1/4-1/4 Corners.

PLAN - VIEW**Reason for filing certificate:**

- ☒ There is no certificate on file with the Recorder's Office.
☐ Accepts corner position which differs from the one shown in above document.
☐ The corner monument was replaced or modified.
☐ The reference ties in above document were incorrect or missing.

- ☐ DENOTES 6" SQUARE WOOD POT
WITH NAIL & WASHER #16775



764-10

I hereby certify that this land surveying document was prepared and the related survey work was performed by me or under my direct personal supervision and that I am a duly Licensed Land Surveyor under the laws of the State of Iowa.

Signature: David L. Scheil
David L. Scheil, L.S.

Date: July 14, 2021 Lic. No. 16775

Pages or Sheets Covered by this Seal: THIS SHEET ONLY.

My license renewal date is December 31, 2022

SEAL

List Corners to be Indexed

Corners	Section	Twp	Range
NW CORNER,	14	90 N	14 W
SE 1/4, SW 1/4,			

