

MISC ✓

INDEX 98

MARGIN

PROOF

COMPARE

BLACK HAWK COUNTY IOWA SS  
Filed for record Jul 25, 19 97 at  
4:00 P.M. and recorded in Book 326  
of MISC Page 430

*Patricia L. Liss* Recorder  
Fee N/C  
ENGINEER'S OFFICE

1710  
County Assessor

PREPARED BY: BLACK HAWK COUNTY ENGINEERS OFFICE  
316 E. FIFTH STREET, ROOM 211 WATERLOO, IOWA 50703

PH.# (319) 291-2419  
FAX# (319) 291-2461

SLSI 9-94  
CERT 12-96

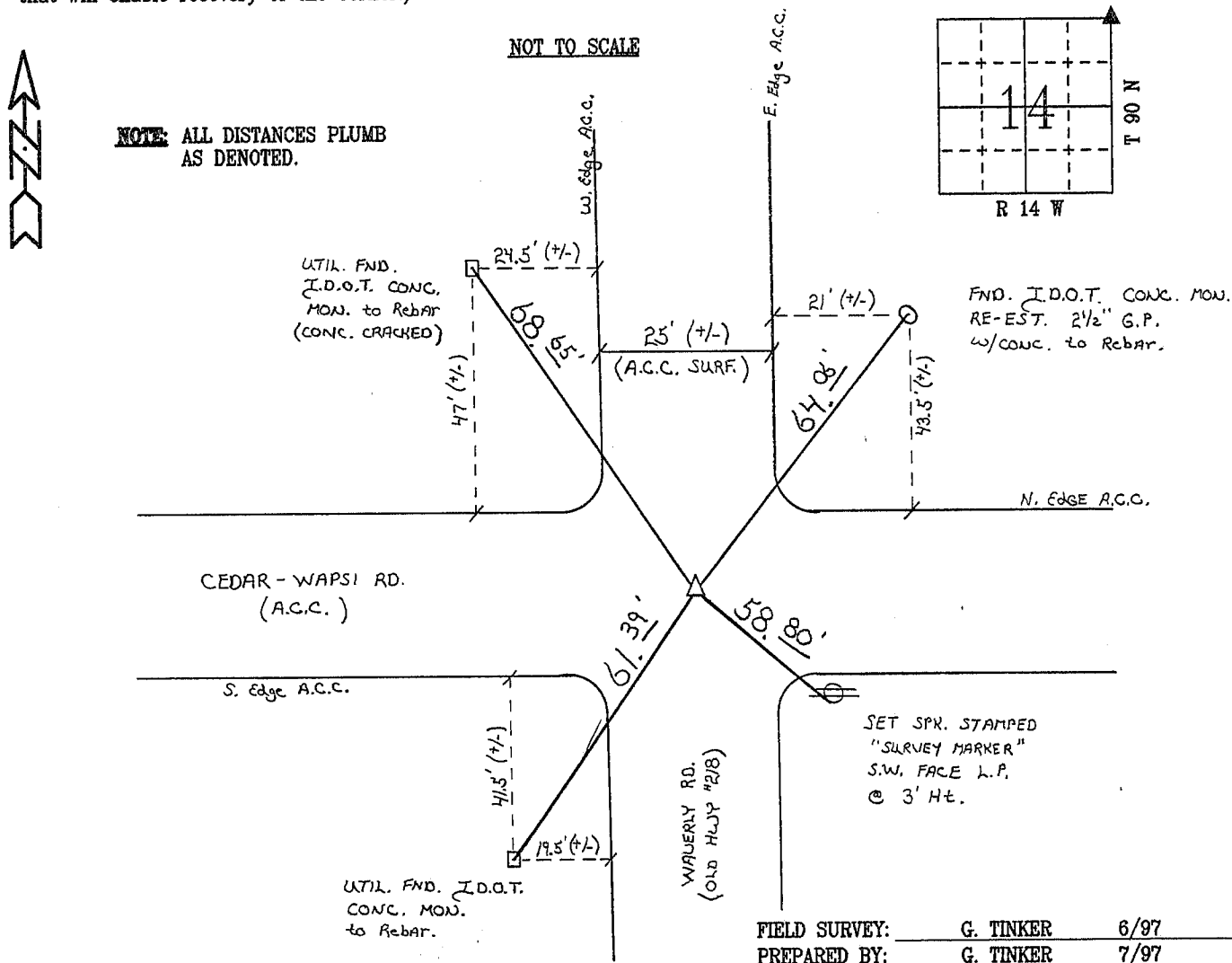
**UNITED STATES PUBLIC LAND SURVEY CORNER CERTIFICATE OF**  
Land Survey Monuments situated in Section 14, Township 90 N,  
Range 14 W, of the Fifth Principal Meridian, BLACK HAWK County, Iowa.  
Previously recorded in Book N/A, Page N/A, in County Recorder's Office.

(Show reason for preparing this certificate, the evidence and detailed procedures used in establishing the corner positions and monumentation found or placed.)

Monument Description and Remarks: RESET 5/8" REBAR FLUSH WITH A.C.C.  
SURFACE, LOC. CENTERLINE INTERSECTION WITH CEDAR-WAPSI ROAD.  
FIELD REFERENCED 2 PREV. UTIL. I.D.O.T. CONC. MONUMENTS, AND EST. 2  
ADDITIONAL REF. TIES AS DENOTED.  
N.E. CORNER, SECTION 14-90-14.  
MON. RE-EST, 1996 RESURFACING PROJECT.

### PLAN - VIEW

(Show a minimum of three reference ties to durable physical objects, relevant monuments and physical conditions that will enable recovery of the corner.)



### CERTIFICATION

I hereby certify that this land surveying document was prepared and the related survey work was performed by me or under my direct personal supervision and that I am a duly licensed Land Surveyor under the laws of the State of Iowa.

*Richard L. King* 7/25/97  
Richard L. King (date)

License Number 3890

My license renewal date is December 31, 1997

Pages or sheets covered by this seal:

This Land Corner Certificate Only.

### LIST CORNERS TO BE INDEXED

| Corner  | Section | Township | Range |
|---------|---------|----------|-------|
| NE COR. | 14      | 90 N     | 14 W  |

