

Reserved for County Recorder's use.



Doc ID: 007574450001 Type: GEN
Recorded: 03/13/2017 at 03:42:22 PM
Fee Amt: \$7.00 Page 1 of 1
Black Hawk County Iowa
SANDIE L. SMITH RECORDER

File 2017-00015877

Kyle J. Helland, 1107 Technology Parkway, Cedar Falls, Iowa 50613-6951, (319)-266-0161

UNITED STATES PUBLIC LAND SURVEY CORNER CERTIFICATE OF

LAND SURVEY MONUMENTS SITUATED IN SECTION NO. 14, TOWNSHIP NO. 90 NORTH, RANGE
NO. 14 WEST OF THE FIFTH PRINCIPAL MERIDIAN, BLACK HAWK COUNTY, IOWA.
PREVIOUSLY RECORDED IN FILE 2016-00005060.

(SHOW REASON FOR PREPARING THIS CERTIFICATE, THE EVIDENCE AND DETAILED PROCEDURES USED IN ESTABLISHING THE
CORNER POSITIONS AND MONUMENTATION FOUND OR PLACED.)

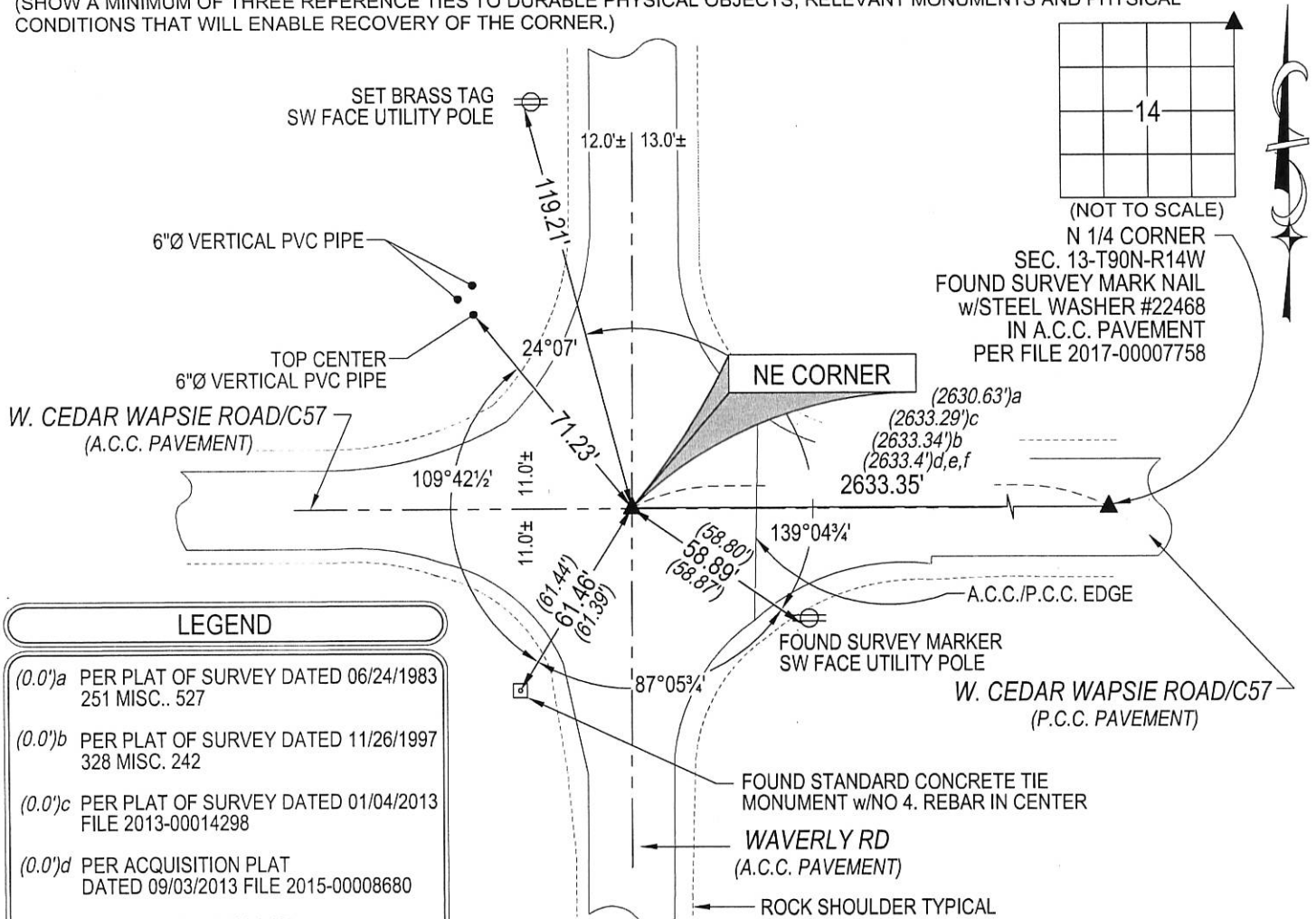
MONUMENT DESCRIPTION AND REMARKS:

ONLY TWO REFERENCE TIES REMAIN. SURVEY COMPLETED IN THE SW 1/4 OF SEC. 12-T90N-R14W.

→ **NE CORNER:** USPLSCC FILE 2016-00005060 DATED 09/10/2015 CALLS FOR [FOUND 5/8" REBAR AT CENTERLINE
INTERSECTION WITH WAVERLY RD. AND CEDAR WAPSI RD. W. USING PREVIOUS CERT OF RECORD. REASON
FOR CERT REFERENCE TIES DIFFER FROM RECORD AND UPDATING IDOT RECORDS.] SEARCHED AREA
FOUND NO. 5 REBAR IN A.C.C. PAVEMENT.

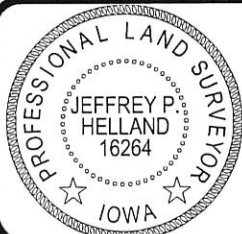
PLAN VIEW

(SHOW A MINIMUM OF THREE REFERENCE TIES TO DURABLE PHYSICAL OBJECTS, RELEVANT MONUMENTS AND PHYSICAL
CONDITIONS THAT WILL ENABLE RECOVERY OF THE CORNER.)



HELLAND ENGINEERING & SURVEYING, LTD.
1107 Technology Parkway
Cedar Falls, Iowa 50613-6951
(319)-266-0161

SHINER = 8d. NAIL & 1 5/16"Ø METAL SHINER DRAWN BY: SMN
BRASS TAG = 8d. NAIL & 13/16"Ø BRASS TAG
OPC = PLASTIC CAP (O=ORANGE, R=RED, Y=YELLOW)
(00') RECORDED AS FILE NAME: 17-114-25.DWG



I hereby certify that this land surveying document was prepared
and the related survey work was performed by me or under my
direct personal supervision and that I am a duly licensed

Jeffrey P. Helland 2/21/17
Jeffrey P. Helland
License Number 16264
My license renewal date is December 31, 2017.
All pages or sheets are covered by this seal except:

LIST CORNERS TO BE INDEXED

| CORNER | SECTION | TOWNSHIP | RANGE |
|-----------|---------|----------|-------|
| NE CORNER | 14 | 90N | 14W |
| SE CORNER | 11 | 90N | 14W |
| SW CORNER | 12 | 90N | 14W |
| NW CORNER | 13 | 90N | 14W |