



Doc ID: 004991610001 Type: GEN  
Kind: CORNER  
Recorded: 12/05/2012 at 01:43:02 PM  
Fee Amt: \$0.00 Page 1 of 1  
Black Hawk County Iowa  
JUDITH A MCCARTHY RECORDER

File 2013-00011531

PREPARED BY: \*BLACK HAWK COUNTY ENGINEERS OFFICE  
316 E. FIFTH STREET, ROOM 211 WATERLOO, IOWA 50703

PH.# (319) 833-3008  
FAX.# (319) 833-3139

SLSI 9-94  
BHCO 03-09

UNITED STATES PUBLIC LAND SURVEY CORNER CERTIFICATE OF  
Land Survey Monuments situated in Section 14, Township 90 N,  
Range 14 W, of the Fifth Principal Meridian, BLACK HAWK County, Iowa.  
Previously recorded in Misc Book 299, Page 599, in County Recorder's Office.

(Show reason for preparing this certificate): The corner monument has been Replaced or Modified, per Ia. Code 355.11(i)(c)

(Evidence and detailed procedures used in establishing the corner position(s) and monumentation found or placed.)

Monument Description and Remarks: N. 1/4 CORNER:

CORNER RESET & TIES UPDATED PER H.M.A. RESURF. PROJECT LFM-503--7X-07. PRIOR TO  
RESURF. PROJECT, FOUND #5 (5/8") REBAR PER CURRENT RECORD AND TEMP. REF.  
COR. LOCATION PER RTK GPS. AFTER 1.5' DEEP MILL & REFILL w/INTERMED. COURSE H.M.A.,  
NO SOUNDING REMAINING @ LOCATION. AFTER ADDITIONAL 1.5' H.M.A. SURFACE COURSE,  
RESET CORNER WITH 5/8" (#5) x ±7"L. REBAR LOCATED AT 0.6' SOUTH OF C.L. H.M.A. JOINT  
AND ALIGNED ±0.8' EAST OF FENCE LINE TO SOUTH.

## PLAN VIEW

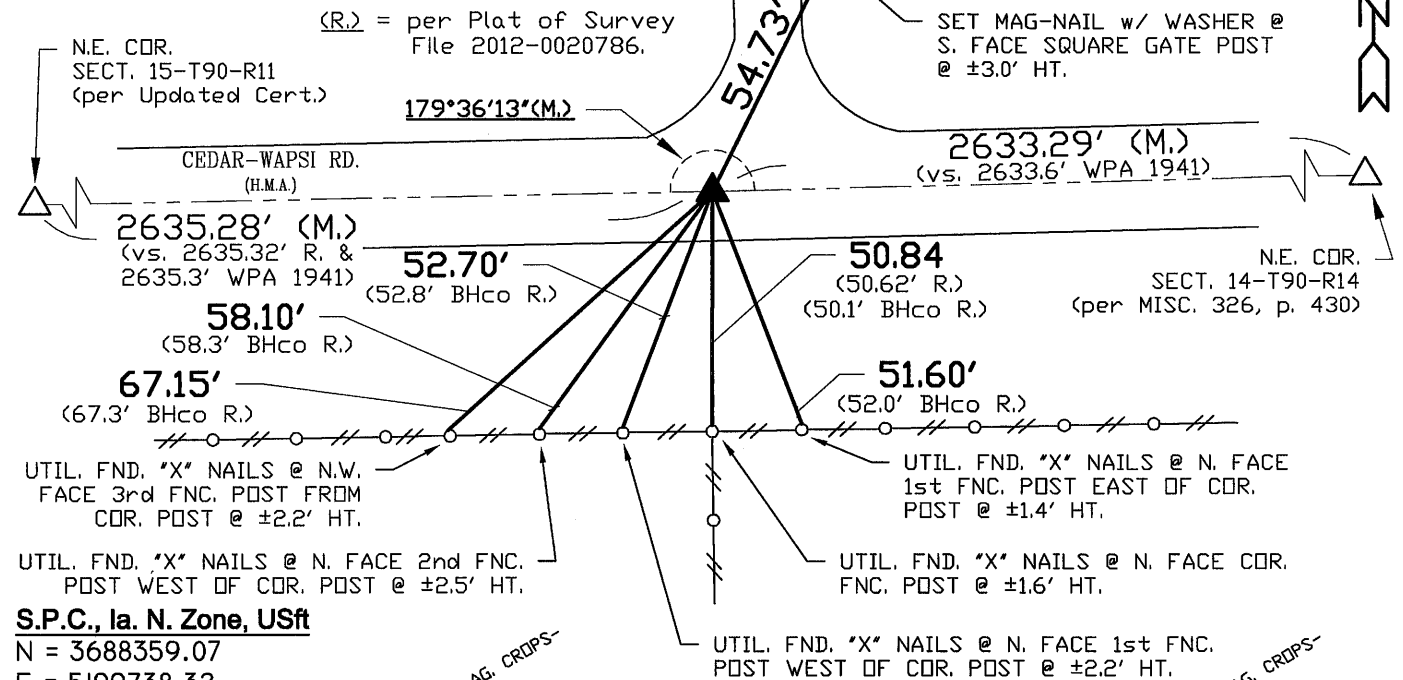
"NOT TO SCALE"

BHco Hist. Ties: BK. #1003 p. 14 T90-R14

FIELD BOOK: Ties per Topcon 7003i #Z0115

(Show a minimum of three reference ties to durable physical objects, relevant monuments and physical conditions that will enable recovery of the corner.)

- 1.) TIES PER EDM MEASURE IN EITHER PRISM "OR" NON-PRISM MODE, WHILE UTILIZING "INDIRECT" MEASURE, WITH ALL DISTANCES PLUMB/HORIZ. (HD), UNLESS DENOTED.
- 2.) SECTION LINE MEASURE REFERS TO "LOCAL GROUND" DIST. AND INCLUDES ELLIPSOID (COMBINED) SCALE FACTOR FROM S.P.C. GRID INVERSE (AS OBSERVED), PER AVG. SCALE FACTOR = 1.000093804492.



**S.P.C., Ia. N. Zone, USft**

N = 3688359.07

E = 5199738.32

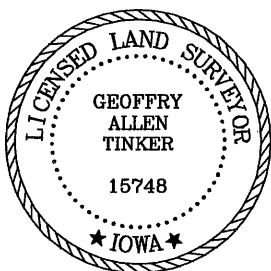
CONVERGENCE = 0° 42' 04"

(NAD83-NSRS2007 "BHco07", RTK Obs.)

FIELD SURVEY: S.S. 9/11/12

PREPARED BY: S.S. & G.T. 12/5/12

## CERTIFICATION



I hereby certify that this land surveying document was prepared and the related survey work was performed by me or under my direct personal supervision and that I am a duly licensed Land Surveyor under the laws of the State of Iowa.

*Geoffrey Allen Tinker* 12/05/2012  
Geoffrey Allen Tinker (date)

License Number 15748

My license renewal date is December 31, 2012

Pages or sheets covered by this seal:

This Land Corner Certificate Only.

## LIST CORNERS TO BE INDEXED

Corner	Section -	Township -	Range
N. 1/4 Cor.	14	90 N	14 W
S. 1/4 Cor.	11	90 N	14 W

## INDEX OF ABBREVIATIONS

(M) = "Measured" Dimension	"NP" = Reflectorless EDM Meas.
(P) = "Platted" Dimension	"MLM" = Indirect Measure
(R) = "Record" Dimension	"CM" = Concrete Monument
(C) = "Calculated" Dimension	"SM" = Survey Marker Spike/Tag
"IGS" = Iowa Geodetic Survey	"PK" = PK/MAG Nail Brand Style
"WPA" = Works Progress Admin. Survey	
"G" = per George Miller Survey (BHco Surveyor 1858-1880)	
"S" = per John Ball Survey (BHco Surveyor 1886-1891)	
"N" = per Nathan Barber Survey (BHco Surveyor 1908-1931)	