

Doc ID: 010224410001 Type: GEN  
Recorded: 07/28/2021 at 04:08:09 PM  
Fee Amt: \$7.00 Page 1 of 1  
Black Hawk County Iowa  
SANDIE L. SMITH RECORDER  
File **2022-00002189**

Env  
X

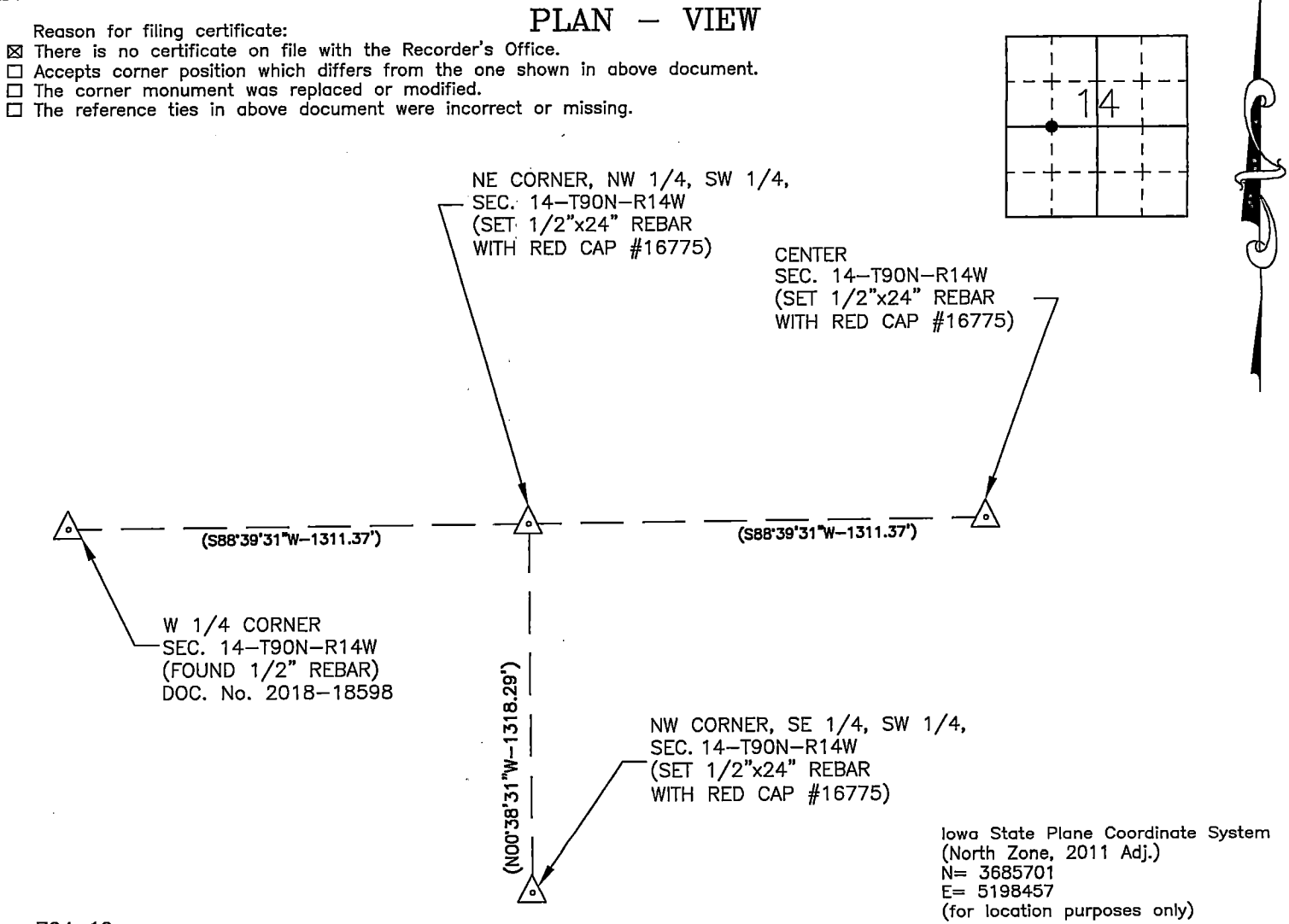
WAYNE CLAASSEN ENGINEERING AND SURVEYING, INC.  
P.O. BOX 898 WATERLOO, IOWA 50704-0898

PHONE: (VOICE) 319-235-6294  
(FAX) 319-235-0028

UNITED STATES PUBLIC LAND SURVEY CORNER CERTIFICATE

Land Survey Monuments situated in Section 14, Township 90 North, Range 14 West, of the Fifth Principal Meridian, Black Hawk County, Iowa.  
Previously recorded in \_\_\_\_\_ in County Recorder's Office.  
(book, page, document number, etc.)

Monument Description and Remarks  
Set 1/2"x24" iron pin and red cap #16775 at mid point between Center and W 1/4 Corner.



764-10

I hereby certify that this land surveying document was prepared and the related survey work was performed by me or under my direct personal supervision and that I am a duly Licensed Land Surveyor under the laws of the State of Iowa.

Signature: David L. Scheil  
David L. Scheil, L.S.

Date: JULY 14, 2024 Lic. No. 16775

Pages or Sheets Covered by this Seal: THIS SHEET ONLY.

My license renewal date is December 31, 2022

SEAL

List Corners to be Indexed

Corners	Section	Twp	Range
NE CORNER, NW 1/4, SW 1/4,	14	90 N	14 W

