

SC ✓  
MISC ✓  
INDEX 9/9  
MARGIN  
PROOF ✓  
COMPARE ✓

BLACK HAWK COUNTY IOWA:SS  
Filed for record JUL 31, 1997  
at 12:30 PM, and recorded in Book 326  
of MISC Page 479  
Recorder  
Fee N/C  
BLACK HAWK COUNTY ENGINEER

2043

PREPARED BY: BLACK HAWK COUNTY ENGINEERS OFFICE  
316 E. FIFTH STREET, ROOM 211 WATERLOO, IOWA 50703

PH# (319) 291-2419  
FAX# (319) 291-2461

SLSI 9-94  
CERT 12-98

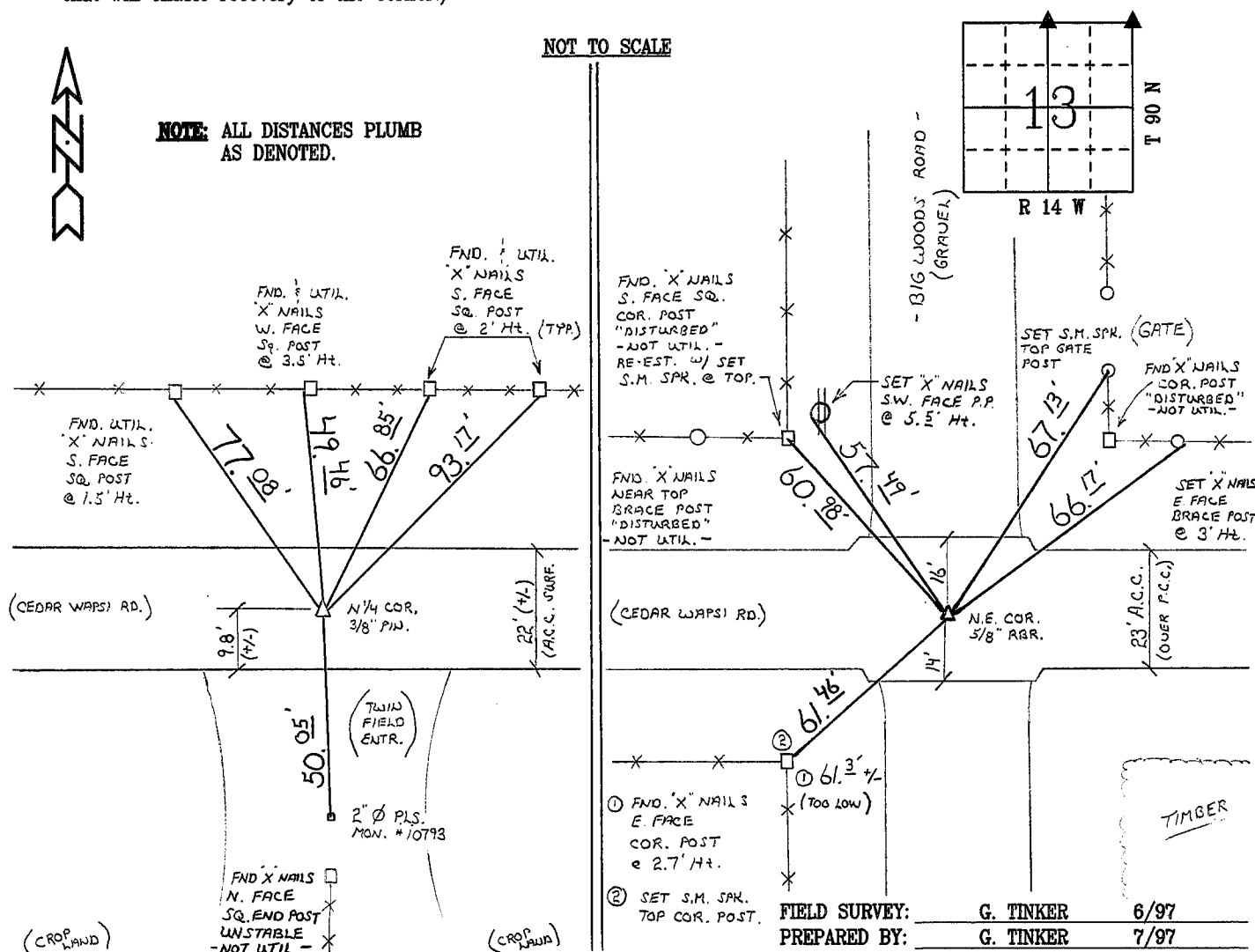
UNITED STATES PUBLIC LAND SURVEY CORNER CERTIFICATE OF  
Land Survey Monuments situated in Section 13, Township 90 N,  
Range 14 W, of the Fifth Principal Meridian, BLACK HAWK County, Iowa.  
Previously recorded in Book 293, Page 351, in County Recorder's Office.

(Show reason for preparing this certificate, the evidence and detailed procedures used in establishing the corner positions and monumentation found or placed.)

Monument Description and Remarks: "N. 1/4" UPDATE WITH I.D.O.T. REF. TIES  
03-97. FND. 3/8" STEEL PIN/NAIL FLUSH W/ A.C.C. SURFACING, ALIGNED WITH  
FENCE TO SOUTH. UPDATE TIES AS DENOTED.  
"N.E. CORNER" FND. RESET 5/8" REBAR LOC. 0.70' S. OF CENTERLINE JNT.  
(A.C.C.) @ INTERSECTION WITH BIG WOODS ROAD. UPDATE TIES AS DENOTED.  
MON. RE-EST, 1995 RESURFACING PROJECT.

### PLAN - VIEW

(Show a minimum of three reference ties to durable physical objects, relevant monuments and physical conditions that will enable recovery of the corner.)



### CERTIFICATION

I hereby certify that this land surveying document was prepared and the related survey work was performed by me or under my direct personal supervision and that I am a duly licensed Land Surveyor under the laws of the State of Iowa.

*Richard L. King* 7/25/97  
Richard L. King  
License Number 3890

My license renewal date is December 31, 1997

Pages or sheets covered by this seal:

This Land Corner Certificate Only.

### LIST CORNERS TO BE INDEXED

Corner	Section	Township	Range
N. 1/4	13	90 N	14 W
N.E. COR.	13	90 N	14 W

