

Reserved for County Recorder's use.



Doc ID: 007574470001 Type: GEN
Recorded: 03/13/2017 at 03:42:53 PM
Fee Amt: \$7.00 Page 1 of 1
Black Hawk County Iowa
SANDIE L. SMITH RECORDER
File **2017-00015879**

Kyle J. Helland, 1107 Technology Parkway, Cedar Falls, Iowa 50613-6951, (319)-266-0161

UNITED STATES PUBLIC LAND SURVEY CORNER CERTIFICATE OF

LAND SURVEY MONUMENTS SITUATED IN SECTION NO. 12, TOWNSHIP NO. 90 NORTH, RANGE
NO. 14 WEST OF THE FIFTH PRINCIPAL MERIDIAN, BLACK HAWK COUNTY, IOWA.
PREVIOUSLY RECORDED IN N/A.

(SHOW REASON FOR PREPARING THIS CERTIFICATE, THE EVIDENCE AND DETAILED PROCEDURES USED IN ESTABLISHING THE
CORNER POSITIONS AND MONUMENTATION FOUND OR PLACED.)

MONUMENT DESCRIPTION AND REMARKS:

NO USPLSCC ON FILE. SURVEY COMPLETED IN THE SW 1/4 OF SEC. 12-T90N-R14W.

→ **NE CORNER SW 1/4 SW 1/4:** PLAT OF SURVEY MISC. BOOK 328 PAGE 242 DATED 11/26/1997 CALLS FOR [PIN w/
CAP #6505]. SEARCHED AREA, FOUND NO. 4 REBAR 0.5' DEEP.

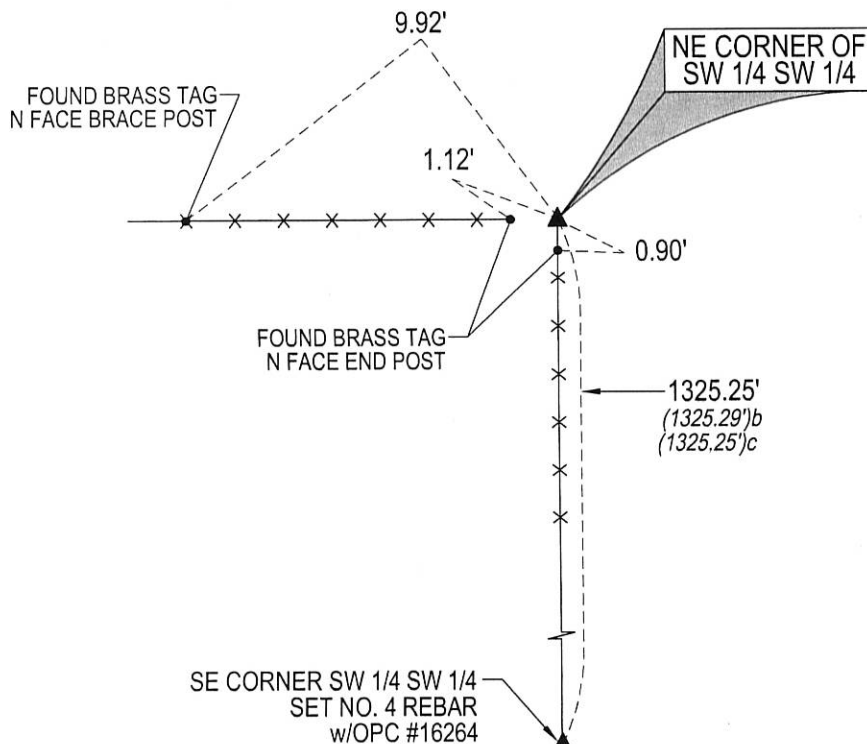
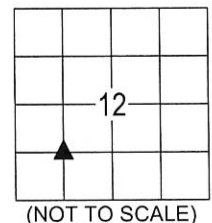
PLAN VIEW

(SHOW A MINIMUM OF THREE REFERENCE TIES TO DURABLE PHYSICAL OBJECTS, RELEVANT MONUMENTS AND PHYSICAL
CONDITIONS THAT WILL ENABLE RECOVERY OF THE CORNER.)

LEGEND

(0.0')^b PER PLAT OF SURVEY DATED 11/26/1997
328 MISC. 242

(0.0')^c PER PLAT OF SURVEY DATED 01/04/2013
FILE 2013-00014298



(BEARINGS ARE ASSUMED)



HELLAND ENGINEERING & SURVEYING, LTD.
1107 Technology Parkway
Cedar Falls, Iowa 50613-6951
(319)-266-0161

SHINER = 8d. NAIL & 1 5/16"Ø METAL SHINER DRAWN BY: SMN
BRASS TAG = 8d. NAIL & 13/16"Ø BRASS TAG
OPC = PLASTIC CAP (O=ORANGE, R=RED, Y=YELLOW)
(00') RECORDED AS FILE NAME: 17-114-55.DWG



I hereby certify that this land surveying document was prepared
and the related survey work was performed by me or under my
direct personal supervision and that I am a duly licensed

Jeffrey P. Helland 2/21/17
Jeffrey P. Helland
License Number 16264
My license renewal date is December 31, 2017.
All pages or sheets are covered by this seal except:

LIST CORNERS TO BE INDEXED

CORNER	SECTION	TOWNSHIP	RANGE
NE COR. SW 1/4 SW 1/4	12	90N	14W
SE COR. NW 1/4 SW 1/4	12	90N	14W
SW COR. NE 1/4 SW 1/4	12	90N	14W
NW COR. SE 1/4 SW 1/4	12	90N	14W