



Doc ID: 005026790001 Type: GEN
Kind: CORNER
Recorded: 01/08/2013 at 03:56:19 PM
Fee Amt: \$7.00 Page 1 of 1
Black Hawk County Iowa
JUDITH A MCCARTHY RECORDER

File 2013-00014299

UNITED STATES PUBLIC LAND SURVEY CORNER CERTIFICATE
OF

Land Survey Monuments situated in Section 12, Township 90 N, Range 14 W, of the Fifth Principal Meridian, Black Hawk County, Iowa
Previously recorded in Book N/A, Page .

Show reason for preparing this certificate, the evidence and detailed procedures used in establishing the corner positions and monumentation found or placed.)

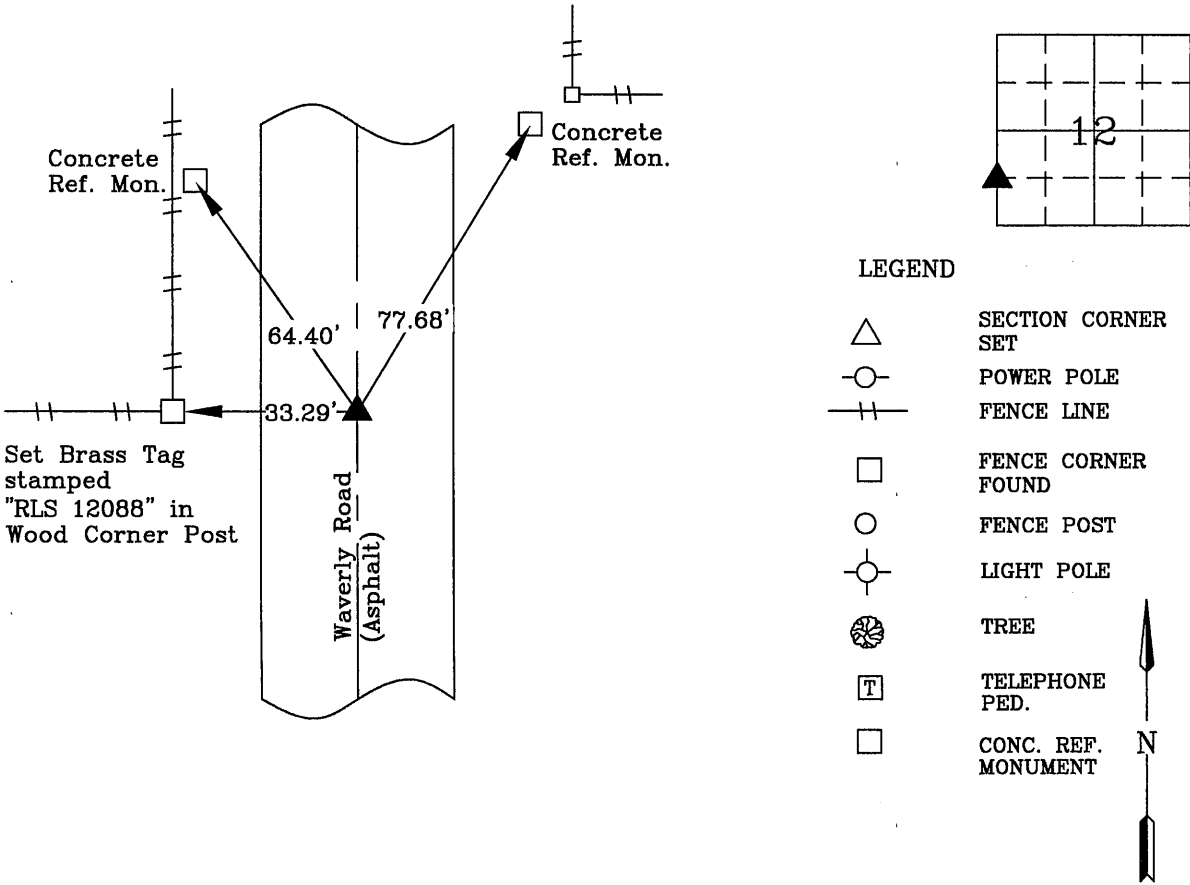
Monument Description and Remarks: NW Corner, SW 1/4, SW 1/4 12-90N-14W
Set "Mag Nail" in asphalt paving at the midpoint between the West 1/4 corner and Southwest corner.

This corner was used for a survey in the SW 1/4 SW 1/4 of 12-90N-14W.

No previous corner certificate on file.

PLAN - VIEW

(Show a minimum of three reference ties to durable physical objects, relevant monuments and physical conditions recovery of the corner.)



I hereby certify that this land surveying document was prepared and the related survey work was performed by me or under my direct personal supervision and that I am a duly licensed Land Surveyor under the laws of the State of Iowa.



Wendell J. Lupkes 1-8-2013
WENDELL J. LUPKES, L.S. DATE
License number 12088
My license renewal date is December 31, 2014
Pages or sheets covered by this seal: 1

List Corner to be Indexed

Corner	Section	Twp	Range
NW Cor.	12	90 N	14 W
SW 1/4			
SW 1/4			



VJ Engineering
1501 Technology Parkway
Cedar Falls, Iowa - 319-266-5829

SECTION CORNER
REFERENCE TIES

scale
NONE
drawn by
MAK
date
1/7/13

(7.00)