



Doc ID: 005207710001 Type: GEN
Kind: CORNER
Recorded: 07/08/2013 at 01:49:03 PM
Fee Amt: \$7.00 Page 1 of 1
Black Hawk County Iowa
JUDITH A MCCARTHY RECORDER

File **2014-00000519**

PREPARED BY / RETURN TO: KENNETH D. STARK IOWA DEPARTMENT OF TRANSPORTATION 1420 4th ST. SE MASON CITY, IA 50401 641-423-7584

UNITED STATES PUBLIC LAND SURVEY CORNER CERTIFICATE OF

Land Survey Monuments situated in Section 12, Township 90N, Range 14W
of the Fifth Principal Meridian, BLACK HAWK County, Iowa.

Previously recorded in BK 326, PG 432 - FEE BK *2005 16202 in County Recorder's Office.
(book, page, document number, etc.)

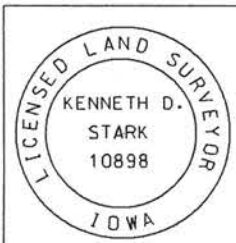
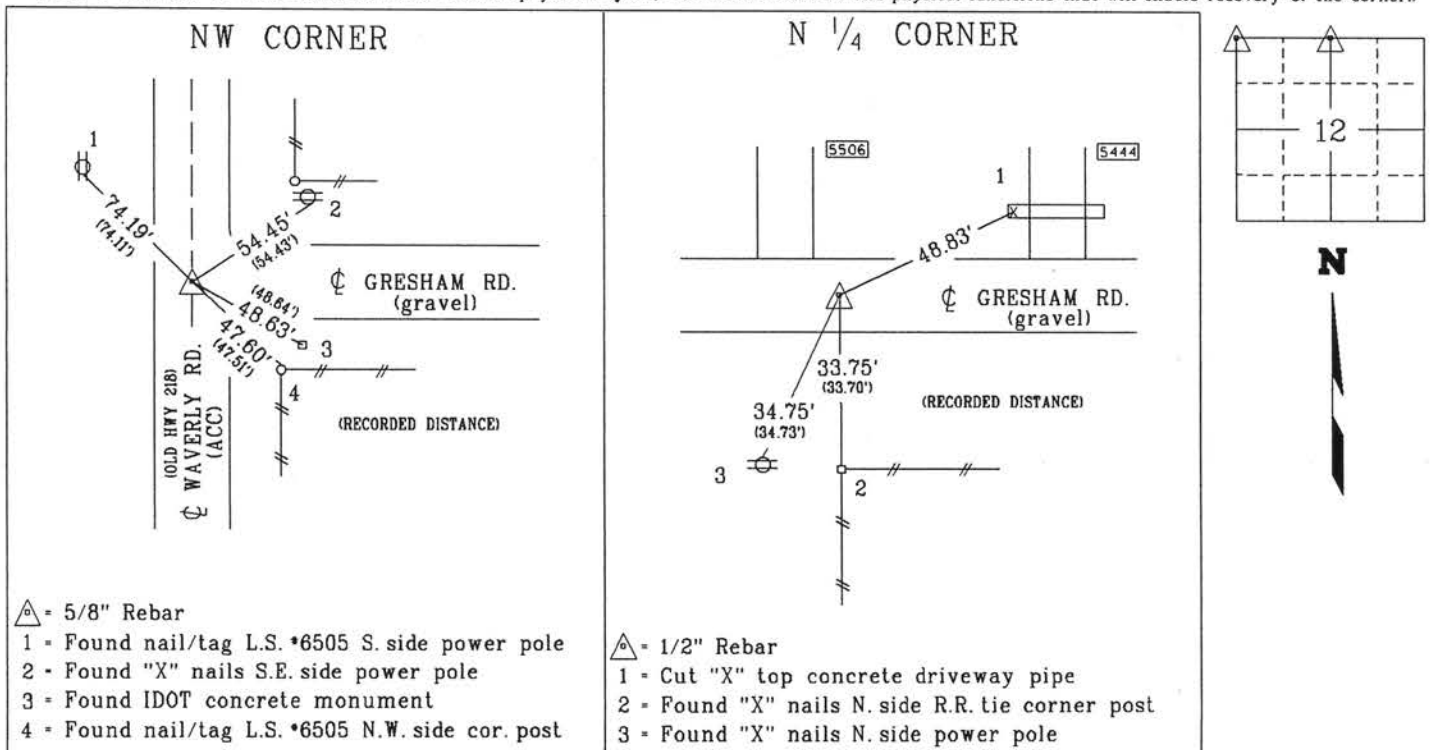
(Show reason for preparing this certificate, the evidence and detailed procedures used in establishing the corner positions and monumentation found or placed.)

Monument Description and Remarks: NW CORNER FOUND 5/8" REBAR ON $\frac{1}{2}$ WAVERLY RD. USING PREVIOUS CERT OF RECORD. REASON FOR CERT UPDATING CERT AND IDOT RECORDS.

N $\frac{1}{4}$ CORNER FOUND 1/2" REBAR 0.2' DEEP $\frac{1}{2}$ GRESHAM RD. USING PREVIOUS CERT OF RECORD. REASON FOR CERT ONLY TWO REFERENCE TIES REMAIN AND UPDATING IDOT RECORDS.

PLAN - VIEW

(Show a minimum of three reference ties to durable physical objects, relevant monuments and physical conditions that will enable recovery of the corner.)



I hereby certify that this land surveying document was prepared and the related survey work was performed by me or under my personal supervision and that I am a duly Licensed Land Surveyor under the laws of the state of Iowa.
Kenneth D. Stark 07-02-13
Kenneth D. Stark Date
License number 10898
My License renewal date is December 31, 2013
Pages or sheets covered by this seal. 1

List Corners to be Indexed

Corner	Section	Township	Range
NW CORNER	12	90N	14W
N $\frac{1}{4}$ CORNER	12	90N	14W

drawn by: c/s 2/13

07-12-90-14

tied by: me,cs
right-of-way

2.007

1