

PREPARED BY / RETURN TO: KENNETH D. STARK IOWA DEPARTMENT OF TRANSPORTATION 1420 4th ST. SE MASON CITY, IA 50401 641-423-7584

UNITED STATES PUBLIC LAND SURVEY CORNER CERTIFICATE
OF

Land Survey Monuments situated in Section 12, Township 90N, Range 14W
of the Fifth Principal Meridian, BLACK HAWK County, Iowa.

Previously recorded in BOOK 326, PAGE 431 in County Recorder's Office.
(book, page, document number, etc.)

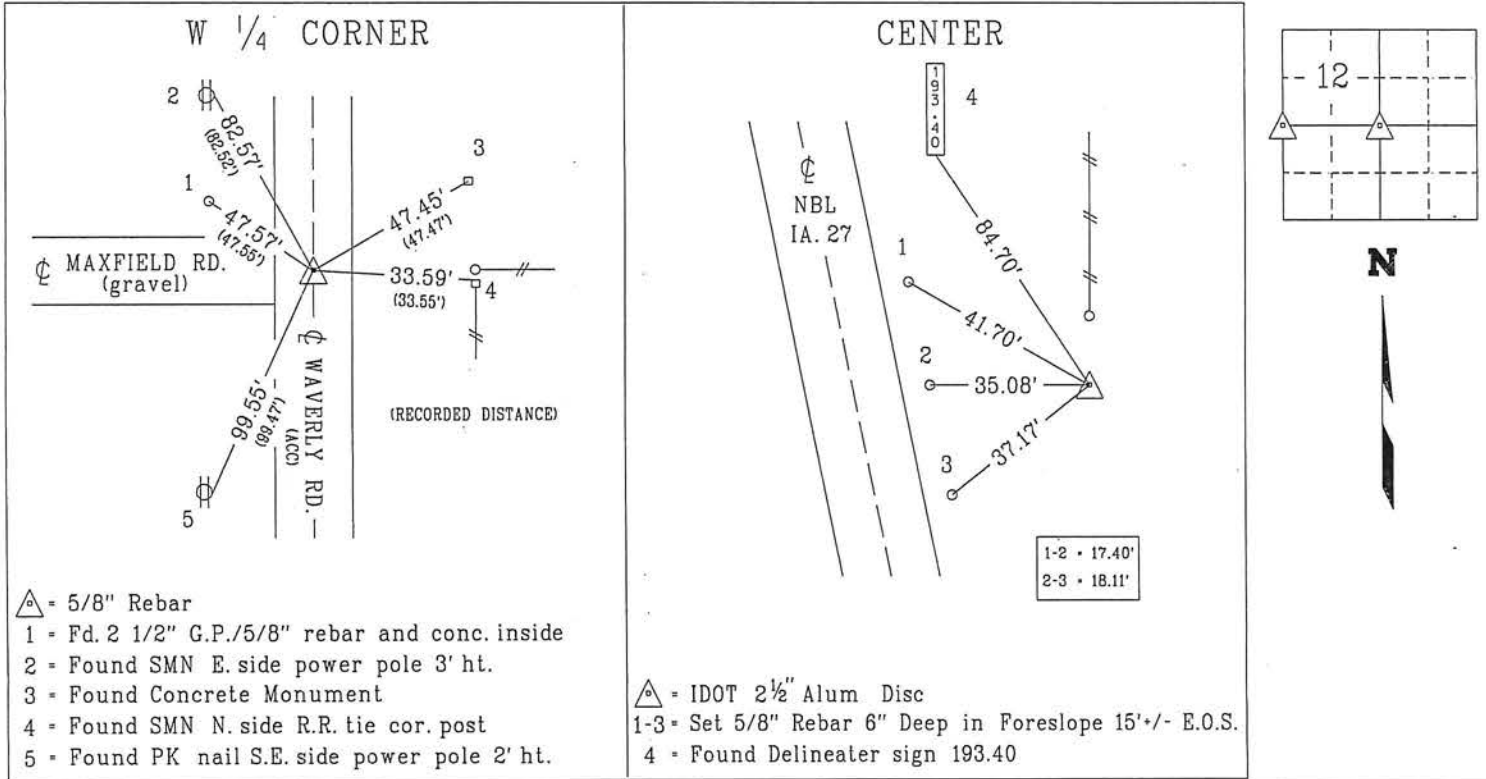
(Show reason for preparing this certificate, the evidence and detailed procedures used in establishing the corner positions and monumentation found or placed.)

Monument Description and Remarks:
W 1/4 CORNER FOUND 5/8" REBAR ON W 1/4 WAVERLY RD. USING PREVIOUS CERT OF RECORD.
REASON FOR CERT UPDATING CERT AND IDOT RECORDS.

CENTER FOUND IDOT ALUM DISC USING IDOT INFORMATION OF RECORD. REASON FOR CERT NO
CERT OF RECORD AND UPDATING IDOT RECORDS.

PLAN - VIEW

(Show a minimum of three reference ties to durable physical objects, relevant monuments and physical conditions that will enable recovery of the corner.)



PROFESSIONAL LAND SURVEYOR
KENNETH D. STARK
10898
IOWA

I hereby certify that this land surveying document was prepared and the related survey work was performed by me or under my personal supervision and that I am duly licensed Land Surveyor under the laws of the state of Iowa.
Kenneth D. Stark
License number 10898
My License renewal date is December 31, 2015
Pages or sheets covered by this seal.

07-10-15
Date

| List Corners to be Indexed | | | |
|----------------------------|---------|----------|-------|
| Corner | Section | Township | Range |
| W 1/4 CORNER | 12 | 90N | 14W |
| CENTER | 12 | 90N | 14W |

drawn by: c/s