

Reserved for County Recorder's use.



Doc ID: 010433670001 Type: GEN
Recorded: 04/20/2022 at 10:54:14 AM
Fee Amt: \$7.00 Page 1 of 1
Black Hawk County Iowa
SANDIE L. SMITH RECORDER

File 2022-00020389

Kyle J. Helland, 6109 Chancellor Drive, Cedar Falls, Iowa 50613-6916, (319)-266-0161

UNITED STATES PUBLIC LAND SURVEY CORNER CERTIFICATE
OF

LAND SURVEY MONUMENTS SITUATED IN SECTION NO. 11, TOWNSHIP NO. 90 NORTH, RANGE
NO. 14 WEST OF THE FIFTH PRINCIPAL MERIDIAN, BLACK HAWK COUNTY, IOWA.
PREVIOUSLY RECORDED IN FILE #2003 30858

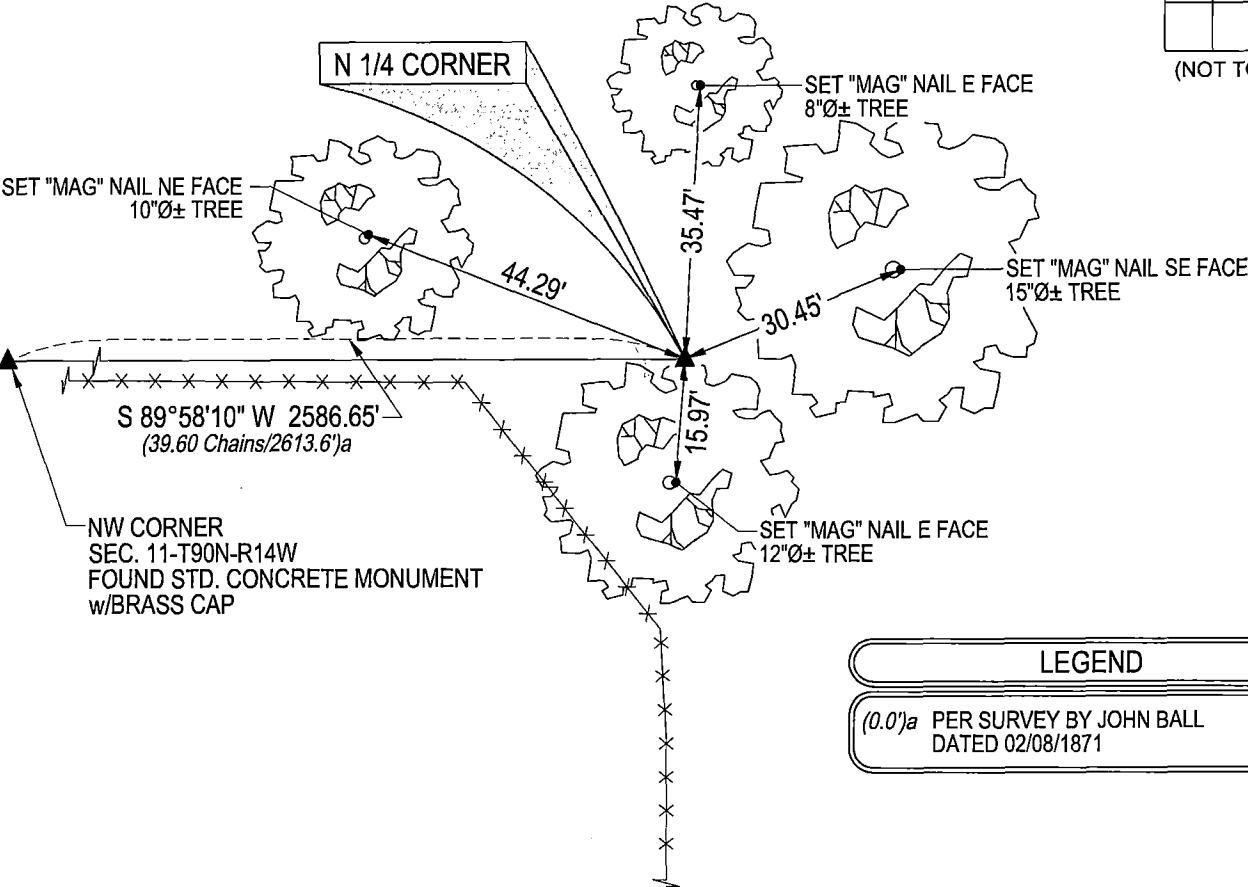
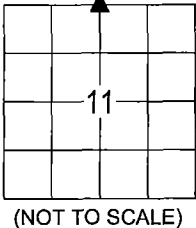
(SHOW REASON FOR PREPARING THIS CERTIFICATE, THE EVIDENCE AND DETAILED PROCEDURES USED IN ESTABLISHING THE
CORNER POSITIONS AND MONUMENTATION FOUND OR PLACED.)

MONUMENT DESCRIPTION AND REMARKS:
NO REFERENCE TIES REMAIN. SURVEY COMPLETED IN THE SW 1/4 OF SEC. 2-T90N-R14W.

N 1/4 CORNER: WPA NOTES PAGE 28 DATED 8/28/1940 CALLS FOR [DUG HOLE FOUND LIMESTONE 10"x11"x2" LOWERED
ALL EVIDENCE IN PLACE SET C.M. ON TOP WITH CAP MARKED 2/11]. LAND SURVEY MONUMENT RECORD 293 MISC 278
DATED 10/10/1990 CALLS FOR [CONC. MONUMENT - FOUND @ GROUND LEVEL]. USPLSCC FEE BOOK #2003 30858 DATED
04/17/2003 CALLS FOR [FOUND CONCRETE MONUMENT w/BRASS CAP PER 293 MISC. 278; ONE REMAINING TIE. SET NO.
4 REBAR ON NORTH SIDE OF C.M. FOR MAGNETIC DETECTION. TOP OF C.M. IS FLUSH w/SURFACE OF GROUND.].
SEARCHED AREA, EXCAVATED, AND FOUND CONCRETE MONUMENT w/BRASS CAP STAMPED "2 1/1" 0.3± DEEP. UTILIZED
SAID FOUND CONCRETE MONUMENT AS CORNER.

PLAN VIEW

(SHOW A MINIMUM OF THREE REFERENCE TIES TO DURABLE PHYSICAL OBJECTS, RELEVANT MONUMENTS AND PHYSICAL
CONDITIONS THAT WILL ENABLE RECOVERY OF THE CORNER.)



LEGEND

(0.0')a PER SURVEY BY JOHN BALL
DATED 02/08/1871

(BEARINGS ARE ASSUMED)

HELLAND ENGINEERING & SURVEYING, LTD.
6109 Chancellor Drive
Cedar Falls, Iowa 50613-6916
(319)-266-0161

BRASS TAG = 4d. NAIL & 13/16"Ø BRASS TAG DRAWN BY: KDA
SHINER = 1"Ø STEEL SHINER w/MASONRY NAIL
OPC = PLASTIC CAP (O=ORANGE, R=RED, Y=YELLOW)
(00') RECORDED AS FILE NAME: 22-124-24.DWG

I hereby certify that this land surveying document was prepared
and the related survey work was performed by me or under my
direct personal supervision and that I am a duly licensed
Professional Land Surveyor under the laws of the State of Iowa.
Kyle J. Helland 4/01/2022
Kyle J. Helland
License Number 23212
My license renewal date is December 31, 2023.
All pages or sheets are covered by this seal except:

LIST CORNERS TO BE INDEXED			
CORNER	SECTION	TOWNSHIP	RANGE
N 1/4 CORNER	11	90N	14W
S 1/4 CORNER	2	90N	14W

7600 ✓ m

(7)

1 012