

SC ✓
MISC ✓
INDEX 98
MARGIN
PROOF
COMPARE

BLACK HAWK COUNTY IOWA: SS
File for record Jul 25, 1997 at
4:00 P.M. and recorded in Book 326
of MISC Page 431
Catherine S. Liso Recorder
Fee N/C
Engineer's Office

County Assessor

1711

PREPARED BY: BLACK HAWK COUNTY ENGINEERS OFFICE
316 E. FIFTH STREET, ROOM 211 WATERLOO, IOWA 50703
PH.# (319) 291-2419
FAX.# (319) 291-2461
SLSI 9-94
CERT 12-96

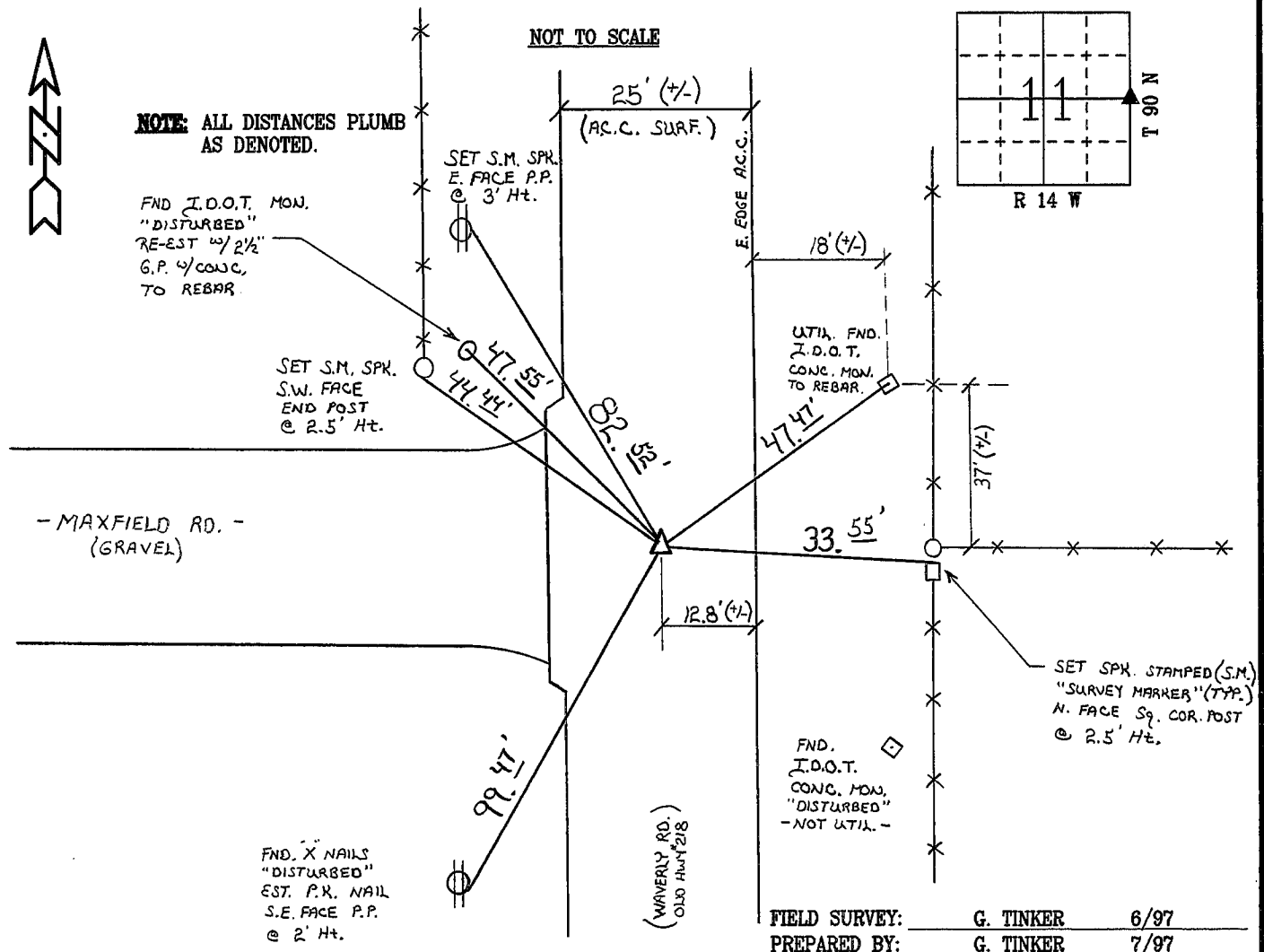
UNITED STATES PUBLIC LAND SURVEY CORNER CERTIFICATE OF
Land Survey Monuments situated in Section 11, Township 90 N,
Range 14 W, of the Fifth Principal Meridian, BLACK HAWK County, Iowa.
Previously recorded in Book N/A, Page N/A, in County Recorder's Office.

(Show reason for preparing this certificate, the evidence and detailed procedures used in establishing the corner positions and monumentation found or placed.)

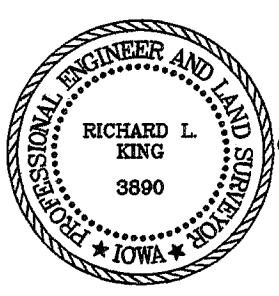
Monument Description and Remarks: RESET 5/8" REBAR FLUSH WITH A.C.C. SURFACE, LOC. CENTERLINE INTERSECTION WITH MAXFIELD ROAD (WEST).
FIELD REFERENCED ONE PREV. UTIL. I.D.O.T. CONC. MONUMENT, AND EST. 5
ADDITIONAL REF. TIES AS DENOTED.
EAST 1/4 CORNER, SECTION 11-90-14
MON. RE-EST, 1996 RESURFACING PROJECT.

PLAN - VIEW

(Show a minimum of three reference ties to durable physical objects, relevant monuments and physical conditions that will enable recovery of the corner.)



CERTIFICATION



I hereby certify that this land surveying document was prepared and the related survey work was performed by me or under my direct personal supervision and that I am a duly licensed Land Surveyor under the laws of the State of Iowa.

Richard L. King 7/25/97
Richard L. King (date)
License Number 3890
My license renewal date is December 31, 1997
Pages or sheets covered by this seal:
This Land Corner Certificate Only.

LIST CORNERS TO BE INDEXED

Corner	Section	Township	Range
E. 1/4	11	90 N	14 W