

Reserved for County Recorder's use.



Doc ID: 010433680001 Type: GEN  
Recorded: 04/20/2022 at 10:54:34 AM  
Fee Amt: \$7.00 Page 1 of 1  
Black Hawk County Iowa  
SANDIE L. SMITH RECORDER

File **2022-00020390**

Kyle J. Helland, 6109 Chancellor Drive, Cedar Falls, Iowa 50613-6916, (319)-266-0161

UNITED STATES PUBLIC LAND SURVEY CORNER CERTIFICATE  
OF

LAND SURVEY MONUMENTS SITUATED IN SECTION NO. 10, TOWNSHIP NO. 90 NORTH, RANGE  
NO. 14 WEST OF THE FIFTH PRINCIPAL MERIDIAN, BLACK HAWK COUNTY, IOWA.  
PREVIOUSLY RECORDED IN N/A

(SHOW REASON FOR PREPARING THIS CERTIFICATE, THE EVIDENCE AND DETAILED PROCEDURES USED IN ESTABLISHING THE  
CORNER POSITIONS AND MONUMENTATION FOUND OR PLACED.)

MONUMENT DESCRIPTION AND REMARKS:

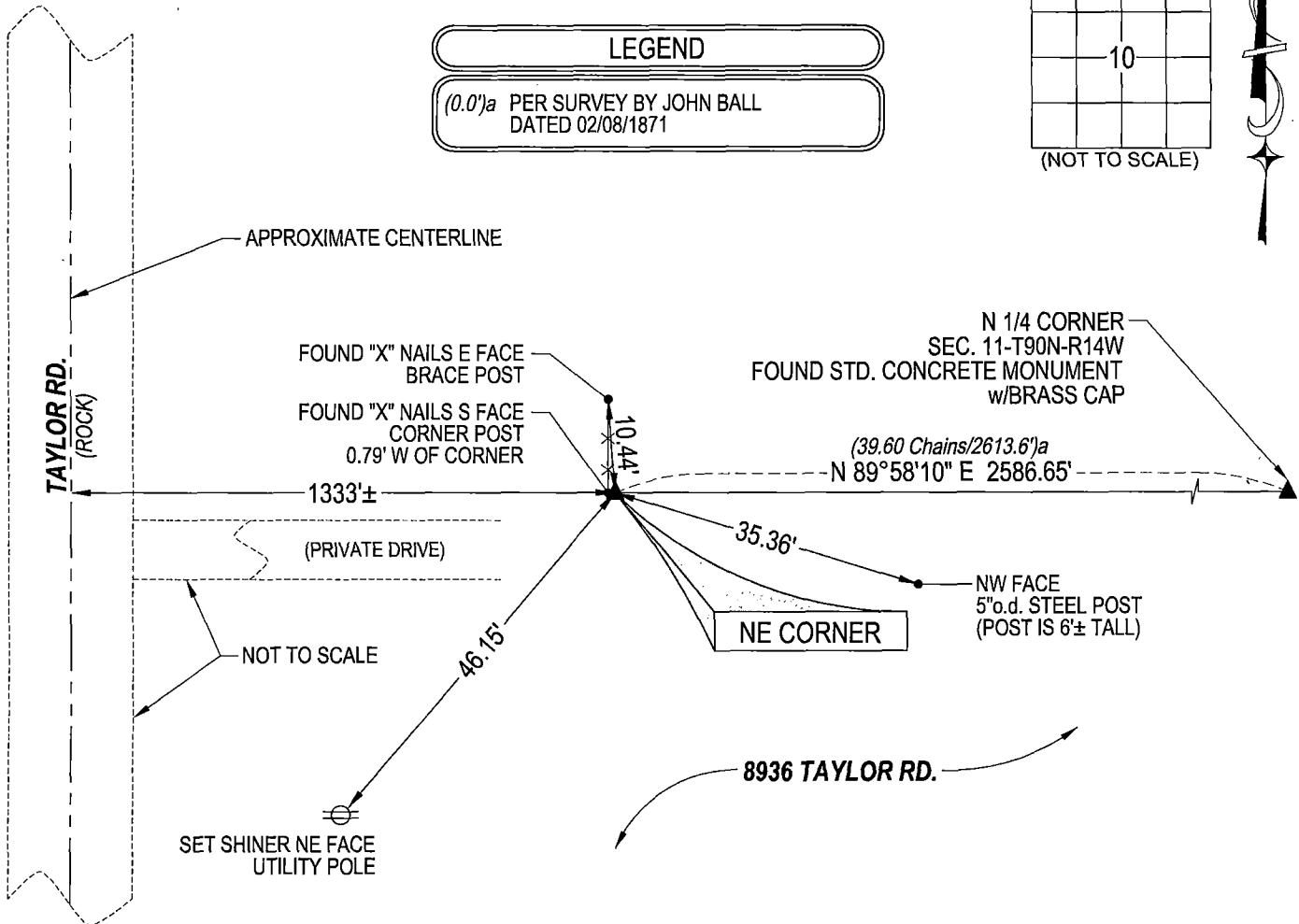
NO USPLSCC ON FILE. SURVEY COMPLETED IN THE SW 1/4 OF SEC. 2-T90N-R14W.

→ **NE CORNER:** WPA NOTES PAGE 26 DATED 08/29/1940 CALLS FOR [DUG HOLE FOUND LIMESTONE 14"x6"x3½" LOWERED  
ALL EVIDENCE IN PLACE SET C.M. ON TOP WITH CAP MARKED 3/2/10/11 SET C.M. 12" DEEP STONE LOCATED ON SEC. FC  
RUN E.W.] WPA NOTES PAGE 14 DATED 03/31/1941 CALLS FOR [S.C.M. SET]. BLACK HAWK COUNTY ENGINEER TIES  
(UNDATED) CALLS FOR [CONCRETE MONUMENT]. SEARCHED AREA, EXCAVATED, AND FOUND STANDARD CONCRETE  
MONUMENT WITH BRASS CAP STAMPED "32" 0.1' DEEP. UTILIZED SAID CONCRETE MONUMENT AS CORNER.

10 11

PLAN VIEW

(SHOW A MINIMUM OF THREE REFERENCE TIES TO DURABLE PHYSICAL OBJECTS, RELEVANT MONUMENTS AND PHYSICAL  
CONDITIONS THAT WILL ENABLE RECOVERY OF THE CORNER.)



(BEARINGS ARE ASSUMED)



HELLAND ENGINEERING & SURVEYING, LTD.  
6109 Chancellor Drive  
Cedar Falls, Iowa 50613-6916  
(319)-266-0161

BRASS TAG = 4d. NAIL & 13/16"Ø BRASS TAG DRAWN BY: KDA  
SHINER = 1"Ø STEEL SHINER w/MASONRY NAIL  
OPC = PLASTIC CAP (O=ORANGE, R=RED, Y=YELLOW)  
(00') RECORDED AS FILE NAME: 22-124-25.DWG



I hereby certify that this land surveying document was prepared  
and the related survey work was performed by me or under my  
direct personal supervision and that I am a duly licensed  
Professional Land Surveyor under the laws of the State of Iowa.  
*Kyle J. Helland* 04/21/2022  
Kyle J. Helland  
License Number 23212  
My license renewal date is December 31, 2023.  
All pages or sheets are covered by this seal except:

| LIST CORNERS TO BE INDEXED |         |          |       |
|----------------------------|---------|----------|-------|
| CORNER                     | SECTION | TOWNSHIP | RANGE |
| NE CORNER                  | 10      | 90N      | 14W   |
| SE CORNER                  | 3       | 90N      | 14W   |
| SW CORNER                  | 2       | 90N      | 14W   |
| NW CORNER                  | 11      | 90N      | 14W   |