

* VJ Engineering 1501 Technology Parkway Ste 100 CF IA 50613

UNITED STATES PUBLIC LAND SURVEY CORNER CERTIFICATE
OF

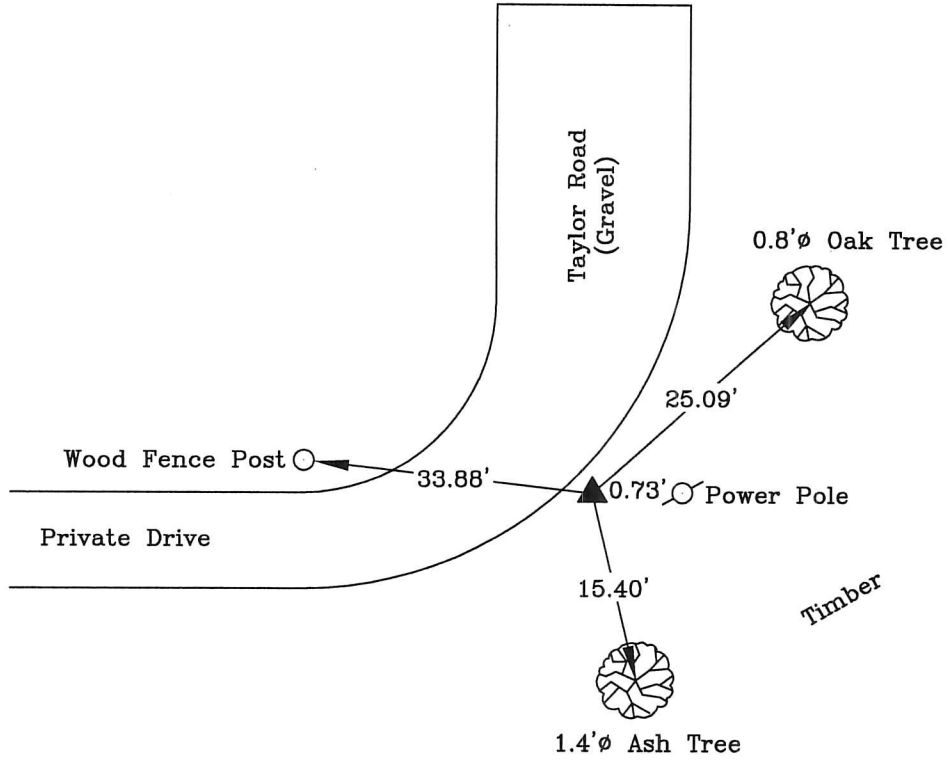
Land Survey Monuments situated in Section 10, Township 90 North, Range 14 West, of the Fifth Principal Meridian, Black Hawk County, Iowa
Previously recorded in Book N/A, Page N/A.

Show reason for preparing this certificate, the evidence and detailed procedures used in establishing the corner positions and monumentation found or placed.)

Monument Description and Remarks: Southeast Corner, Southwest 1/4, Northeast 1/4--10-T90N-R14W
Plat of Survey Doc. No. 2007-4086 calls finding a No. 6 Bar without an ID cap at corner. Searched
area with locator and found No. 6 Bar without an ID cap at corner.
No previous corner certificate recorded.

PLAN - VIEW

(Show a minimum of three reference ties to durable physical objects, relevant monuments and physical conditions recovery of the corner.)



LEGEND

- ▲ SECTION CORNER FOUND
- △ SECTION CORNER SET
- SET 5/8"ø x 24" REBAR W/RED CAP IA LIC #12088
- ⊙ POWER POLE
- +— FENCE LINE
- FENCE CORNER FOUND
- FENCE POST
- ⊙ LIGHT POLE
- ⊗ TREES DECID./CONIF.
- ⊠ TELEPHONE PED.
- CONC. REF. MONUMENT

All Reference Ties are to
Brass Washers Stamped
"RLS 12088" set as noted

I hereby certify that this land surveying document was prepared and the related survey work was performed by me or under my direct personal supervision and that I am a duly licensed Land Surveyor under the laws of the State of Iowa.



Wendell J. Lupkes 1-25-16
WENDELL J. LUPKES, L.S.
License number 12088
My license renewal date is December 31, 2016
Pages or sheets covered by this seal: 1

List Corner to be Indexed

Corner	Section	Twp	Range
SE Corner	10	90 N	14 W
SW 1/4			
NE 1/4			



VJ Engineering
1501 Technology Parkway
Cedar Falls, Iowa - 319-266-5829

SECTION CORNER
REFERENCE TIES

scale
NONE
drawn by
MAK
date
1/25/16