

SU ✓
MISC ✓
INDEX *Ro*
MARGIN
PROOF *gm*
COMPARE

BLACK HAWK COUNTY IOWA: SS
Filed for record Feb 10, 1999, at
4:00 P.M. and recorded in Book 333
of MISC Page 307.
Dennis R. Prange Recorder
Fee 1-5.00
PRANGE SURVEYING
3304 PANTHER LN
CEDAR FALLS IA 50613

18936

PREPARED BY: PRANGE SURVEYING, 3304 PANTHER LANE, CEDAR FALLS, IOWA 50613

SLSI 9-94
CERT 12-96

UNITED STATES PUBLIC LAND SURVEY CORNER CERTIFICATE OF
Land Survey Monuments situated in Section 9, Township 90 North,
Range 14 West, of the Fifth Principal Meridian, Black Hawk County, Iowa.
Previously recorded in Book , Page , in County Recorder's Office.

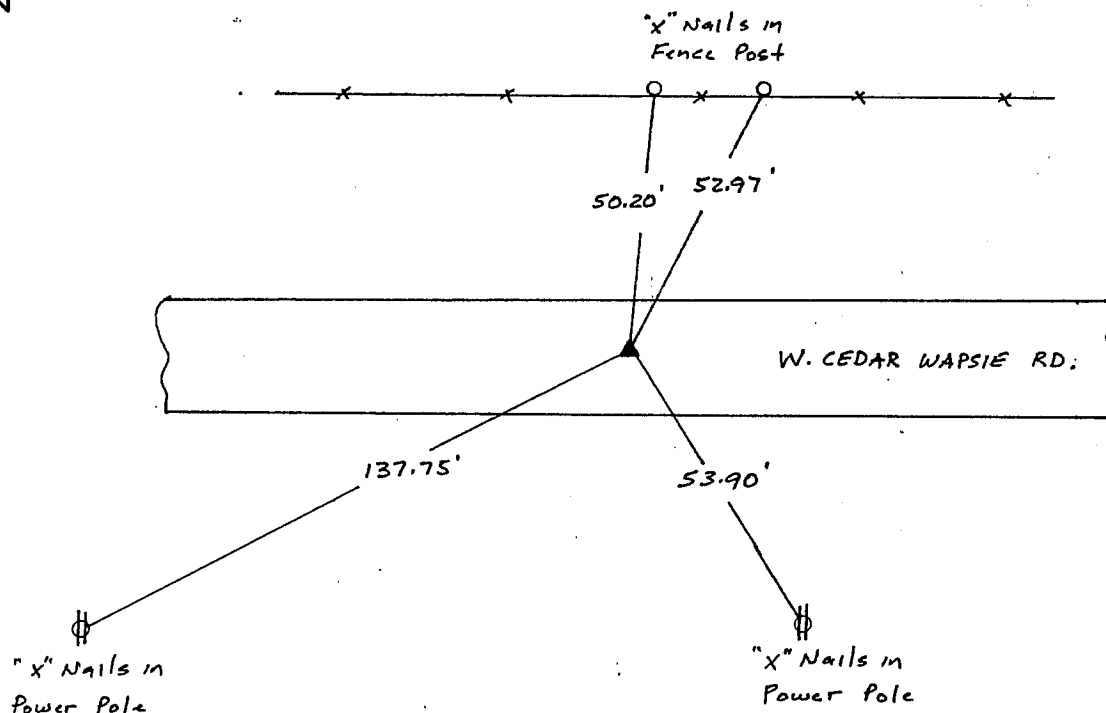
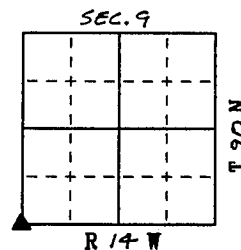
(Show reason for preparing this certificate, the evidence and detailed procedures used in establishing the corner positions and monumentation found or placed.)

Monument Description and Remarks: Found Nail 2.3' North of
Center line. Distances North to Fence Post match old Tie Distances
from Black Hawk County Engineers office.

PLAN - VIEW

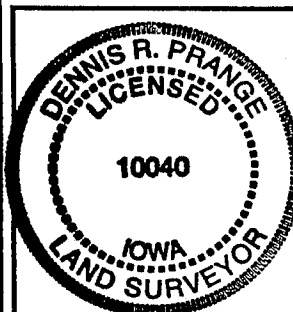
(Show a minimum of three reference ties to durable physical objects, relevant monuments and physical conditions that will enable recovery of the corner.)

NOT TO SCALE



FIELD SURVEY: February 1, 1999
PREPARED BY: Dennis R. Prange

CERTIFICATION



I hereby certify that this land surveying document was prepared and the related survey work was performed by me or under my direct personal supervision and that I am a duly licensed Land Surveyor under the laws of the State of Iowa.

Dennis R. Prange Feb. 8, 1999
(date)

License Number 10040

My license renewal date is December 31, 2000

Pages or sheets covered by this seal:

This Land Corner Certificate Only.

LIST CORNERS TO BE INDEXED

Corner Section - Township - Range

SW cor. Sec. 9-90-14