

Jeffrey P. Helland, 1107 Technology Parkway, Cedar Falls, Iowa 50613-6951, (319)-266-0161

# UNITED STATES PUBLIC LAND SURVEY CORNER CERTIFICATE OF

LAND SURVEY MONUMENTS SITUATED IN SECTION NO. 9, TOWNSHIP NO. 90 NORTH, RANGE NO. 14 WEST OF THE FIFTH PRINCIPAL MERIDIAN, BLACK HAWK COUNTY, IOWA.  
PREVIOUSLY RECORDED IN N/A

(SHOW REASON FOR PREPARING THIS CERTIFICATE, THE EVIDENCE AND DETAILED PROCEDURES USED IN ESTABLISHING THE CORNER POSITIONS AND MONUMENTATION FOUND OR PLACED.)

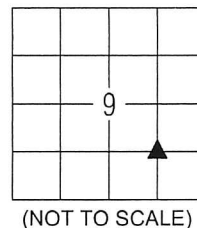
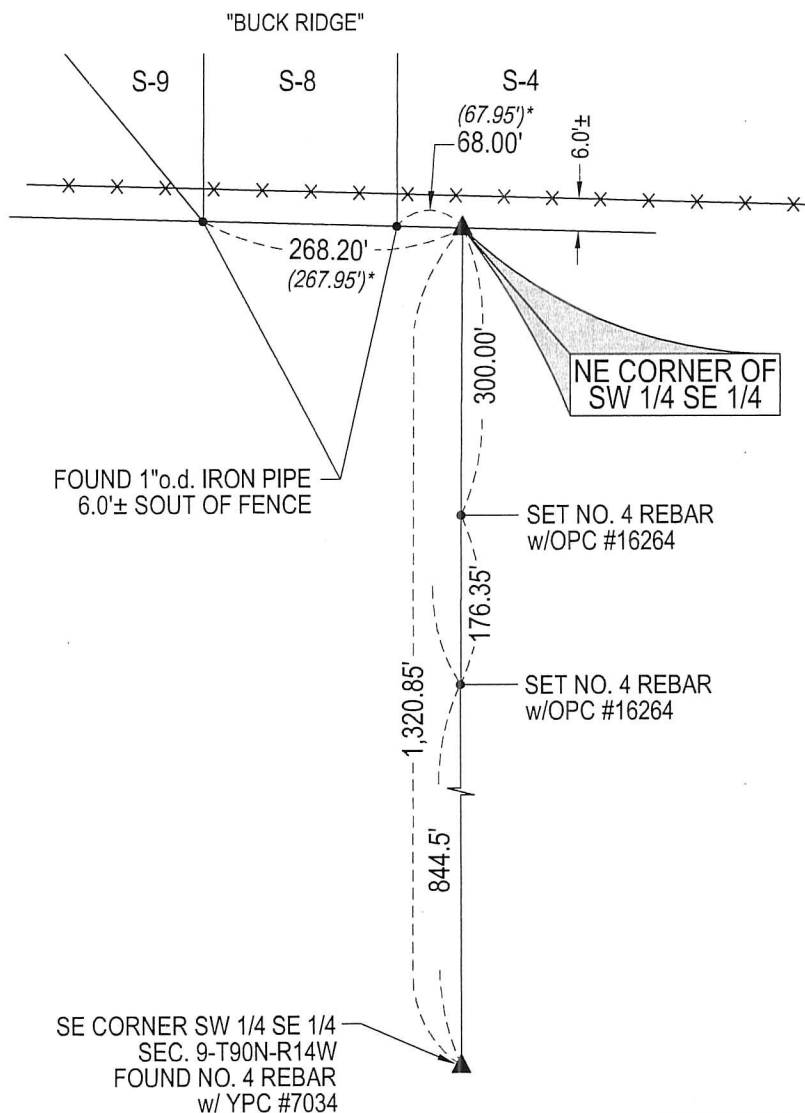
## MONUMENT DESCRIPTION AND REMARKS:

NO USPLSCC ON FILE. SURVEY COMPLETED IN THE SW 1/4 SE 1/4 OF SEC. 9-T90N-R14W.

→ **NE CORNER OF SW 1/4 SE 1/4:** UTILITIZING FOUND MONUMENTATION ALONG THE SOUTH LINE OF "BUCK RIDGE" ADDITION, SET NO. 4 REBAR w/ OPC #16264 BASED ON THE FINAL PLAT OF "BUCK RIDGE".

## PLAN VIEW

(SHOW A MINIMUM OF THREE REFERENCE TIES TO DURABLE PHYSICAL OBJECTS, RELEVANT MONUMENTS AND PHYSICAL CONDITIONS THAT WILL ENABLE RECOVERY OF THE CORNER.)



(NOT TO SCALE)

\* OVERALL DISTANCE SHOWN ON THE N LINE OF THE S 1/2 OF THE SE 1/4 ON THE FINAL PLAT OF "BUCK RIDGE" IS 2594.11', 67.95' IS THE DISTANCE FROM THE SW CORNER OF LOT S-4 TO THE MIDPOINT OF SAID N LINE OF THE S 1/2 OF THE SE 1/4.

(BEARINGS ARE ASSUMED)



HELLAND ENGINEERING & SURVEYING, LTD.  
1107 Technology Parkway  
Cedar Falls, Iowa 50613-6951  
(319)-266-0161

SHINER = 8d NAIL & 1 5/16"Ø METAL SHINER DRAWN BY: KJH  
BRASS TAG = 8d NAIL & 13/16"Ø BRASS TAG  
OPC = PLASTIC CAP (O=ORANGE, R=RED, Y=YELLOW)  
(00') RECORDED AS FILE NAME: 15-147-45.DWG



I hereby certify that this land surveying document was prepared and the related survey work was performed by me or under my direct personal supervision and that I am a duly licensed Professional Land Surveyor under the laws of the State of Iowa.

Jeffrey P. Helland  
License Number 16264  
My license renewal date is December 31, 2015.  
All pages or sheets are covered by this seal except:

## LIST CORNERS TO BE INDEXED

CORNER	SECTION	TOWNSHIP	RANGE
NE COR. SW 1/4 SE 1/4	9	90N	14W
SE COR. NW 1/4 SE 1/4	9	90N	14W
SW COR. NE 1/4 SE 1/4	9	90N	14W
NW COR. SE 1/4 SE 1/4	9	90N	14W