



Doc ID: 004217510001 Type: GEN  
Kind: CORNER  
Recorded: 08/04/2010 at 10:12:54 AM  
Fee Amt: \$0.00 Page 1 of 1  
Black Hawk County Iowa  
JUDITH A MCCARTHY RECORDER  
File **2011-00002256**

PREPARED BY: BLACK HAWK COUNTY ENGINEERS OFFICE PH.# (319) 833-3008 SLSI 9-94  
316 E. FIFTH STREET, ROOM 211 WATERLOO, IOWA 50703 FAX.# (319) 833-3139 BHCO 03-09

UNITED STATES PUBLIC LAND SURVEY CORNER CERTIFICATE OF  
Land Survey Monuments situated in Section 9, Township 90 N,  
Range 14 W, of the Fifth Principal Meridian, BLACK HAWK County, Iowa.  
Previously recorded in File Book 2008, Page 07325, in County Recorder's Office.  
(Show reason for preparing this certificate): The corner monument has been Replaced or Modified, per Ia. Code 355.11(1)(c)

(Evidence and detailed procedures used in establishing the corner position(s) and monumentation found or placed.)

Monument Description and Remarks: N. 1/4 COR.  
FOUND #6 (3/4") REBAR IN ± C.L. EXISTING A.C.C. PAVEMENT, PRIOR TO RESURF. PROJECT.  
CORNER ALSO PREV. RECORDED IN MISC. BK. 316 p.675, ALTHOUGH REF. TIE(S) NOT  
REFERENCED. TEMP REF. w/RTK GPS AND MILLED 2" OF EXIST. ACC & ADDED 2.5" HMA  
SURFACE COURSE. CORNER RESET WITH 5"L. x #5 REBAR IN C.L. HMA PAVEMENT JOINT  
ALIGNED BETWEEN (±) 2 ENTR. TO SOUTH.

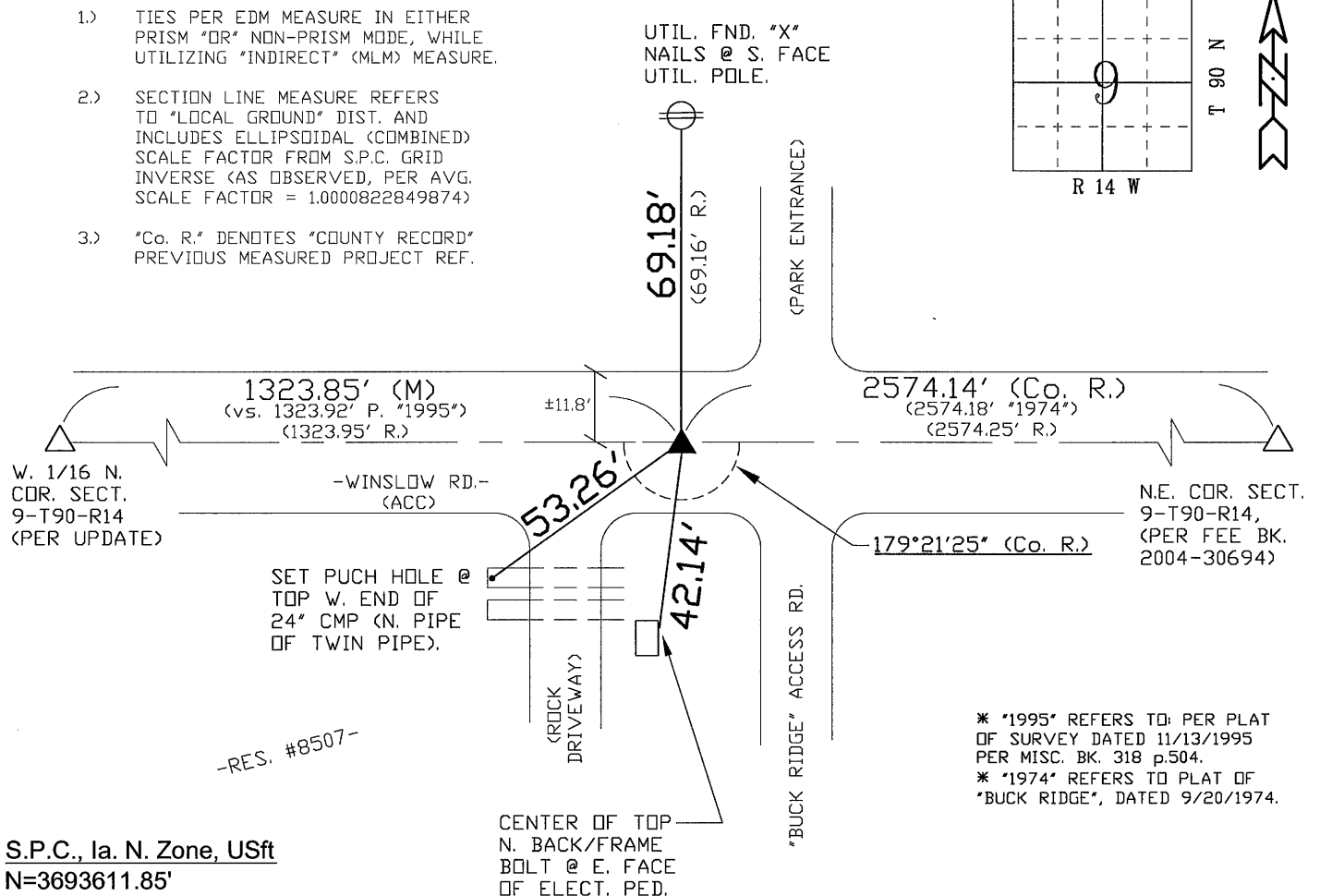
NOTE: ALL DISTANCES PLUMB/HORIZ.  
(H.D.), "UNLESS DENOTED".

### PLAN VIEW

BHco Hist. Ties: BK. #1003 p.9 90-14  
FIELD BOOK: TopSurv7-WinslowHMA

(Show a minimum of three reference ties to durable physical objects, relevant monuments and physical conditions that will enable recovery of the corner.)

- 1.) TIES PER EDM MEASURE IN EITHER PRISM "OR" NON-PRISM MODE, WHILE UTILIZING "INDIRECT" (MLM) MEASURE.
- 2.) SECTION LINE MEASURE REFERS TO "LOCAL GROUND" DIST. AND INCLUDES ELLIPSOIDAL (COMBINED) SCALE FACTOR FROM S.P.C. GRID INVERSE (AS OBSERVED, PER AVG. SCALE FACTOR = 1.0000822849874)
- 3.) "Co. R." DENOTES "COUNTY RECORD" PREVIOUS MEASURED PROJECT REF.



S.P.C., Ia. N. Zone, USft

N=3693611.85'

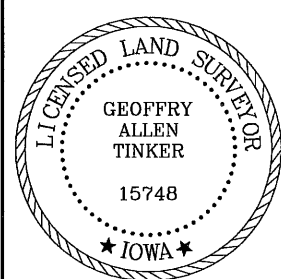
E=5189248.72'

(NAD83-2007 "BHco07", RTK Obs.)

FIELD SURVEY: G.T. & J.D. & M.C. 06/04/10

PREPARED BY: J.D. & G.T. 8/3/10

### CERTIFICATION



I hereby certify that this land surveying document was prepared and the related survey work was performed by me or under my direct personal supervision and that I am a duly licensed Land Surveyor under the laws of the State of Iowa.

Geoffrey Allen Tinker 08/03/2010 (date)

License Number 15748

My license renewal date is December 31, 2010

Pages or sheets covered by this seal:

This Land Corner Certificate Only.

### LIST CORNERS TO BE INDEXED

Corner	Section	Township	Range
N. 1/4 Cor.	9	90 N	14 W
S. 1/4 Cor.	4	90 N	14 W

### INDEX OF ABBREVIATIONS

(M) = "Measured" Dimension "NP" = Reflectorless EDM Meas.  
(P) = "Platted" Dimension "MLM" = Indirect Measure  
(R) = "Record" Dimension "CM" = Concrete Monument  
(C) = "Calculated" Dimension "SM" = Survey Marker Spike/Tag  
"IGS" = Iowa Geodetic Survey "PK" = PK/MAG Nail Brand Style  
"WPA" = Works Progress Admin. Survey  
"G" = per George Miller Survey (BHco Surveyor 1858-1860)  
"B" = per John Ball Survey (BHco Surveyor 1866-1891)  
"N" = per Nathan Barber Survey (BHco Surveyor 1908-1931)