

UNITED STATES PUBLIC LAND SURVEY CORNER CERTIFICATE

OF

Land Survey Monuments situated in Section 9, Township 90, Range 14, of the Fifth Principal Meridian, Black Hawk County, Iowa.
Previously recorded in Not Applicable in County Recorder's Office.
(book, page, document number, etc.)

(Show reason for preparing this certificate, the evidence and detailed procedures used in establishing the corner positions and monumentation found or placed.)

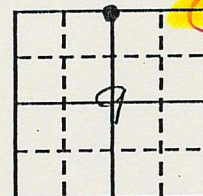
Monument Description and Remarks:

N 1/4 Cor. - Found 1" rebar on asphalt paving

NE Cor - Found 1/2" rebar on west edge gravel driveway

PLAN - VIEW

(Show a minimum of three reference ties to durable physical objects, relevant monuments and physical conditions that will enable recovery of the corner.)



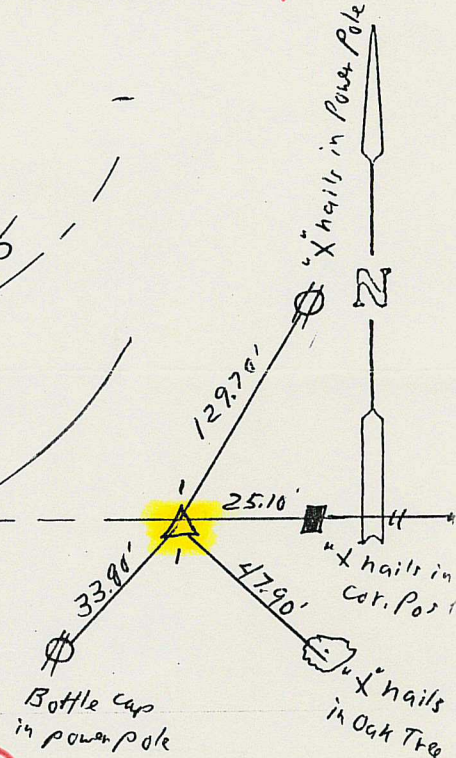
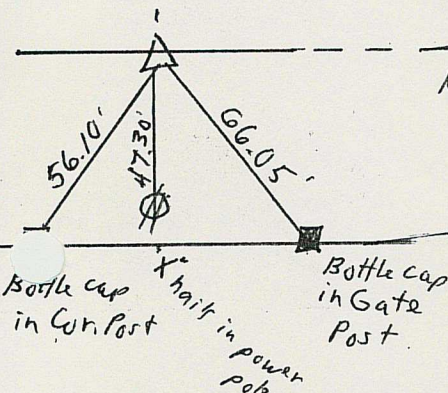
N 1/4 Cor.

Sec 9-90-14

(Found 1" rebar in paving)

County Hwy. C-55

N. line NE 1/4 Sec. 9



P.I.

N.E. Cor. Sec 9-90-14
(Found 1/2" rebar W. side driveway)

I hereby certify that the survey work was completed and this land surveying document was prepared by me or under my direct personal supervision and that I am a duly registered land surveyor under the laws of the state of Iowa

Signature: Harlan K. Schuch

Name typed or printed: Harlan K. Schuch

Date: 6/21/95 Reg. No. 9962

My registration renewal date is December 31, 1995

List Corners to be Indexed

Corners	Section	Twp	Range
N.E.	9	- 90 -	14
N 1/4	9	- 90 -	14

SEAL

MISC. BK. 316 p. 675