

HELLAND ENGINEERING

I dw

Document Number: 2008007325

Date: Oct 02, 2007 4:30:00 pm

Aud Fee:	0.00	Rec Fee:	5.00
----------	------	----------	------

P

Trans Tax:	0.00	Rec Management Fee:	1.00
------------	------	---------------------	------

E-Com Fee:	1.00	Non-Standard Page Fee:	0.00
------------	------	------------------------	------

Z

Filed for record in Black Hawk County, Iowa
Judith A. McCarthy, County Recorder

Paul H. Helland, 1107 Technology Parkway, Cedar Falls, Iowa 50613-6951, (319)-266-0161

UNITED STATES PUBLIC LAND SURVEY CORNER CERTIFICATE OF

LAND SURVEY MONUMENTS SITUATED IN SECTION NO. 9, TOWNSHIP NO. 90 NORTH, RANGE
NO. 14 WEST OF THE FIFTH PRINCIPAL MERIDIAN, BLACK HAWK COUNTY, IOWA.
PREVIOUSLY RECORDED IN 316 MISC. 675

(SHOW REASON FOR PREPARING THIS CERTIFICATE, THE EVIDENCE AND DETAILED PROCEDURES USED IN ESTABLISHING THE CORNER POSITIONS AND MONUMENTATION FOUND OR PLACED.)

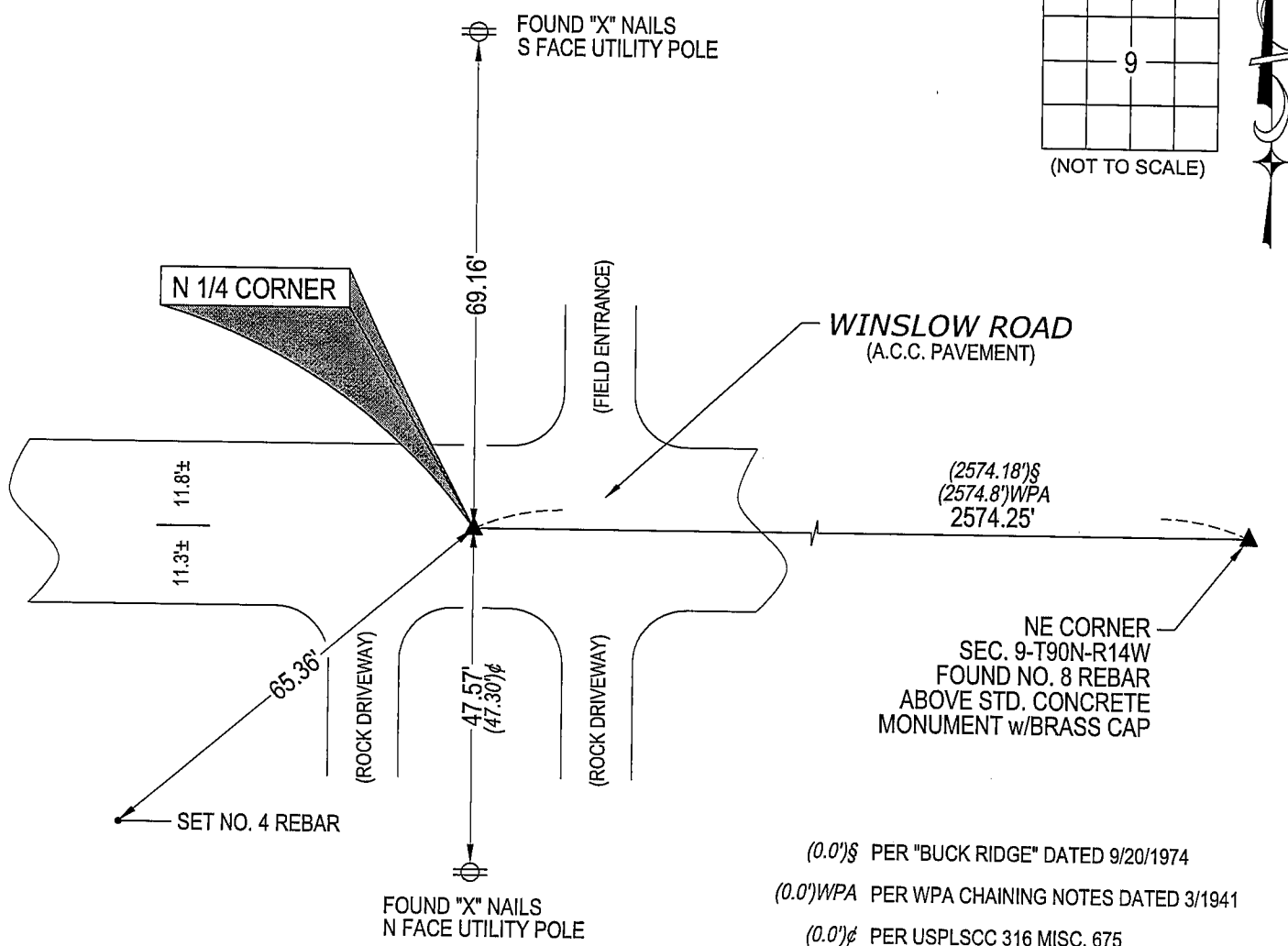
MONUMENT DESCRIPTION AND REMARKS:

USPLSCC REFERENCE TIES HAVE CHANGED. SURVEY COMPLETED IN THE NE 1/4 OF SEC. 9-T90N-R14W.

→ **N 1/4 CORNER:** NO BLACK HAWK COUNTY ENGINEER REFERENCE TIES AVAILABLE. USPLSCC 316 MISC. 675 DATED 6/21/95 CALLS FOR [FOUND 1" REBAR ON CL ASPHALT PAVING]. FOUND NO. 6 REBAR CORRESPONDING WITHIN REASON TO SINGLE REMAINING TIE. ALSO CORRESPONDS WITHIN REASON TO DISTANCE FROM THE NE CORNER PER GEOFF TINKER, L.S., IN THE OFFICE OF THE BLACK HAWK COUNTY ENGINEER.

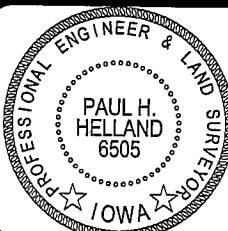
PLAN VIEW

(SHOW A MINIMUM OF THREE REFERENCE TIES TO DURABLE PHYSICAL OBJECTS, RELEVANT MONUMENTS AND PHYSICAL CONDITIONS THAT WILL ENABLE RECOVERY OF THE CORNER.)



HELLAND ENGINEERING & SURVEYING, LTD.
1107 Technology Parkway
Cedar Falls, Iowa 50613-6951
(319)-266-0161

SHINER = 8D NAIL & 1 5/16"Ø METAL SHINER
BRASS TAG = 13/16"Ø BRASS TAG
OPC = PLASTIC CAP (O=ORANGE, R=RED, Y=YELLOW)
(00) RECORDED AS FILE NAME: 07-204C1.DWG



I hereby certify that this land surveying document was prepared and the related survey work was performed by me or under my direct personal supervision and that I am a duly licensed Land Surveyor under the laws of the State of Iowa.

Paul H. Helland
License Number 6505
My license renewal date is December 31, 2007.
All pages or sheets are covered by this seal except:

LIST CORNERS TO BE INDEXED

CORNER	SECTION	TOWNSHIP	RANGE
N 1/4 CORNER	9	90N	14W

N 1/4 CORNER	9	90N	14W
--------------	---	-----	-----