

~~X~~ Jeffrey P. Helland, 1107 Technology Parkway, Cedar Falls, Iowa 50613-6951, (319)-266-0161

LAND SURVEY MONUMENTS SITUATED IN SECTION NO. 9, TOWNSHIP NO. 90 NORTH, RANGE  
NO. 14 WEST OF THE FIFTH PRINCIPAL MERIDIAN, BLACK HAWK COUNTY, IOWA.  
PREVIOUSLY RECORDED IN N/A

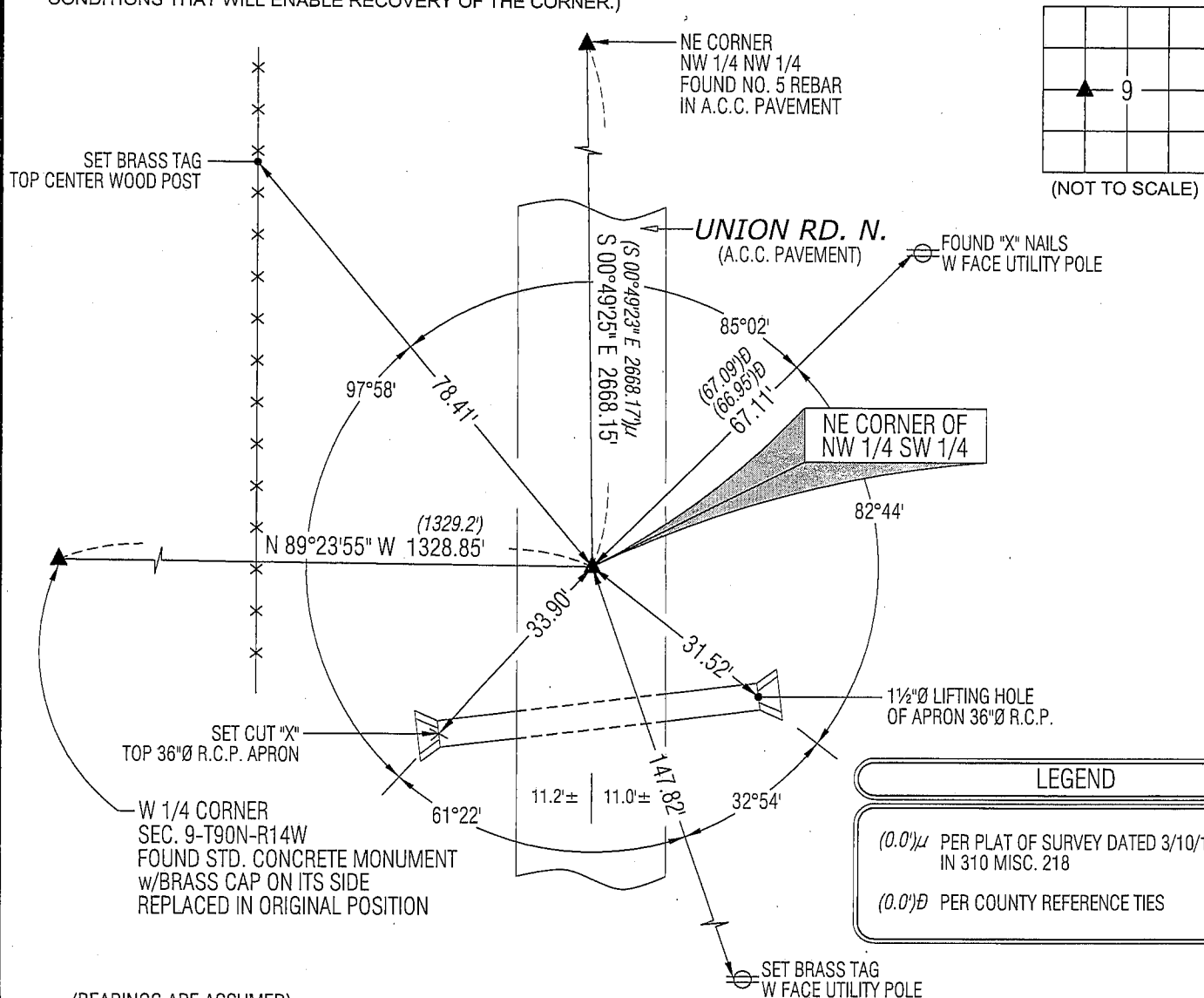
(SHOW REASON FOR PREPARING THIS CERTIFICATE, THE EVIDENCE AND DETAILED PROCEDURES USED IN ESTABLISHING THE CORNER POSITIONS AND MONUMENTATION FOUND OR PLACED.)

MONUMENT DESCRIPTION AND REMARKS:

NO USPLSCC ON FILE. SURVEY COMPLETED IN THE NW 1/4 OF SEC. 9-T90N-R14W.

→ **NE CORNER NW 1/4 SW 1/4:** BLACK HAWK COUNTY ENGINEER REFERENCE TIES DATED 5/1983 DOES NOT STATE WHAT IS AT CORNER. PLAT OF SURVEY DATED 8/26/1993 IN 307 MISC. 906 CALLS FOR [FO. PIN]. FOUND NO. 5 REBAR IN A.C.C. PAVEMENT, CORRESPONDING TO SAID PLAT OF SURVEY AND SAID REFERENCE TIES.

(SHOW A MINIMUM OF THREE REFERENCE TIES TO DURABLE PHYSICAL OBJECTS, RELEVANT MONUMENTS AND PHYSICAL CONDITIONS THAT WILL ENABLE RECOVERY OF THE CORNER.)



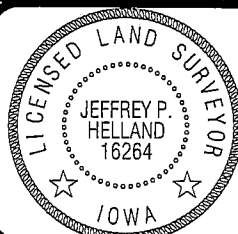
(BEARINGS ARE ASSUMED)



HELLAND ENGINEERING & SURVEYING, LTD.

1107 Technology Parkway  
Cedar Falls, Iowa 50613-6951  
(319)-266-0161

SHINER = 8D NAIL & 1 5/16"Ø METAL SHINER  
BRASS TAG = 13/16"Ø BRASS TAG  
OPC = PLASTIC CAP (O=ORANGE, R=RED, Y=YELLOW)  
(00') RECORDED AS FILE NAME: 09-217C3.DWG



I hereby certify that this land surveying document was prepared and the related survey work was performed by me or under my direct personal supervision and that I am a duly licensed Land Surveyor under the laws of the State of Iowa.

Jeffrey P. Helland  
License Number 16264  
My license renewal date is December 31, 2009.  
All pages or sheets are covered by this seal except:

LIST CORNERS TO BE INDEXED

| CORNER            | SECTION | TOWNSHIP | RANGE |
|-------------------|---------|----------|-------|
| NE COR. NW ¼ SW ¼ | 9       | 90N      | 14W   |
| SE COR. SW ¼ NW ¼ | 9       | 90N      | 14W   |
| SW COR. SE ¼ NW ¼ | 9       | 90N      | 14W   |
| NW COR. NE ¼ SW ¼ | 9       | 90N      | 14W   |

Per