

665817 470

Doc ID: 004028640001 Type: GEN  
Kind: CORNER  
Recorded: 01/14/2010 at 03:31:51 PM  
Fee Amt: \$9.00 Page 1 of 1  
Black Hawk County Iowa  
JUDITH A MCCARTHY RECORDER  
File 2010-00013582

PREPARED BY JERRY L. SHOFF, SHOFF CONSULTING ENGINEERS, LC, 5106 NORDIC DRIVE, CEDAR FALLS, IOWA 50613-6967 (319) 266-0258

UNITED STATES PUBLIC LAND SURVEY CORNER CERTIFICATE  
OF

LAND SURVEY MONUMENTS SITUATED IN SECTION NO. 9, TOWNSHIP NO. 90 NORTH, RANGE NO. 14 WEST, OF THE FIFTH PRINCIPAL MERIDIAN, BLACK HAWK COUNTY, IOWA.  
PREVIOUSLY RECORDED IN BOOK N/A ON PAGE N/A IN THE OFFICE OF THE COUNTY RECORDER.  
(BOOK, PAGE, DOCUMENT NUMBER, ETC.)

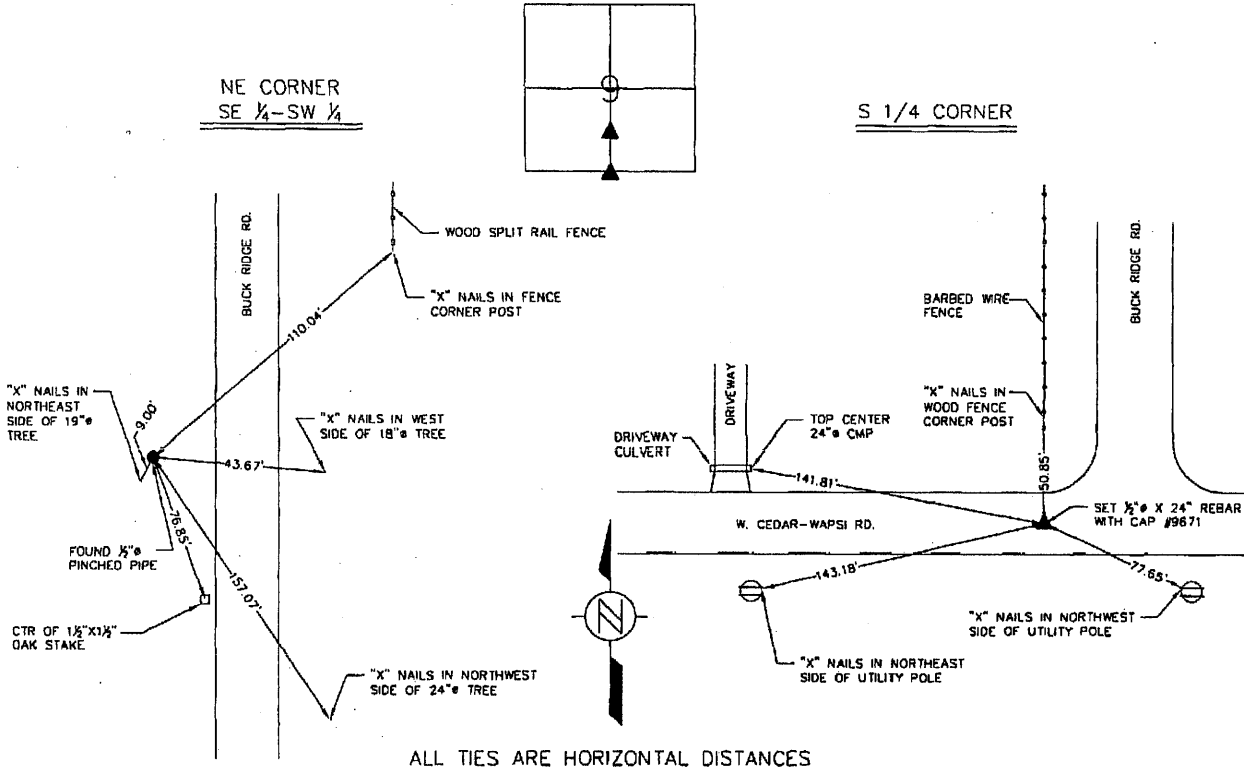
(SHOW REASON FOR PREPARING THIS CERTIFICATE, THE EVIDENCE AND DETAILED PROCEDURES USED IN ESTABLISHING THE CORNER POSITIONS AND MONUMENTATION FOUND OR PLACED.)

MONUMENT DESCRIPTION AND REMARKS: S 1/4 CORNER 9-90-14 - SET 1/2" x 24" REBAR WITH CAP #9671 FROM PROPERTY CORNERS FOUND IN BUCK RIDGE, BLACK HAWK COUNTY  
NE CORNER SE 1/4-SW 1/4 SECTION 9-90-14 - FOUND 1/2" PINCHED PIPE

PLAN - VIEW

(SHOW REASON A MINIMUM OF THREE REFERENCE TIES TO DURABLE PHYSICAL OBJECTS, RELEVANT MONUMENTS AND PHYSICAL CONDITIONS THAT WILL ENABLE RECOVERY OF THE CORNER.)

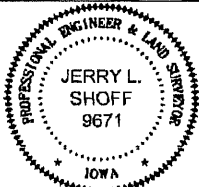
NOT TO SCALE



I HEREBY CERTIFY THAT THIS ENGINEERING AND/OR LAND SURVEYING DOCUMENT WAS PREPARED BY ME OR UNDER MY DIRECT PERSONAL SUPERVISION AND THAT I AM A DULY LICENSED PROFESSIONAL ENGINEER AND LAND SURVEYOR UNDER THE LAWS OF THE STATE OF IOWA.

SIGNED: Jerry L. Shoff  
JERRY L. SHOFF, L.S., P.E. IOWA LICENSE NO. 9671

DATE: 17 Dec 2009  
SEAL



MY LICENSE RENEWAL DATE IS DECEMBER 31, 2010.  
PAGES OR SHEETS COVERED BY THIS SEAL: THIS PAGE ONLY

LIST CORNERS TO BE INDEXED

CORNER	SECTION	TWP	RANGE
S 1/4	9	90N	14W
NE CORNER SE 1/4-SW 1/4	9	90N	14W

C:\Black Hawk County\Knoch Subdivision\Survey\Knoch Addition Corner Certificate.dwg

DRAWN BY: SCHNEIDER

CHECKED BY: Aaron

9.00 2-20