

SLSI 9-94  
BHC0 03-09

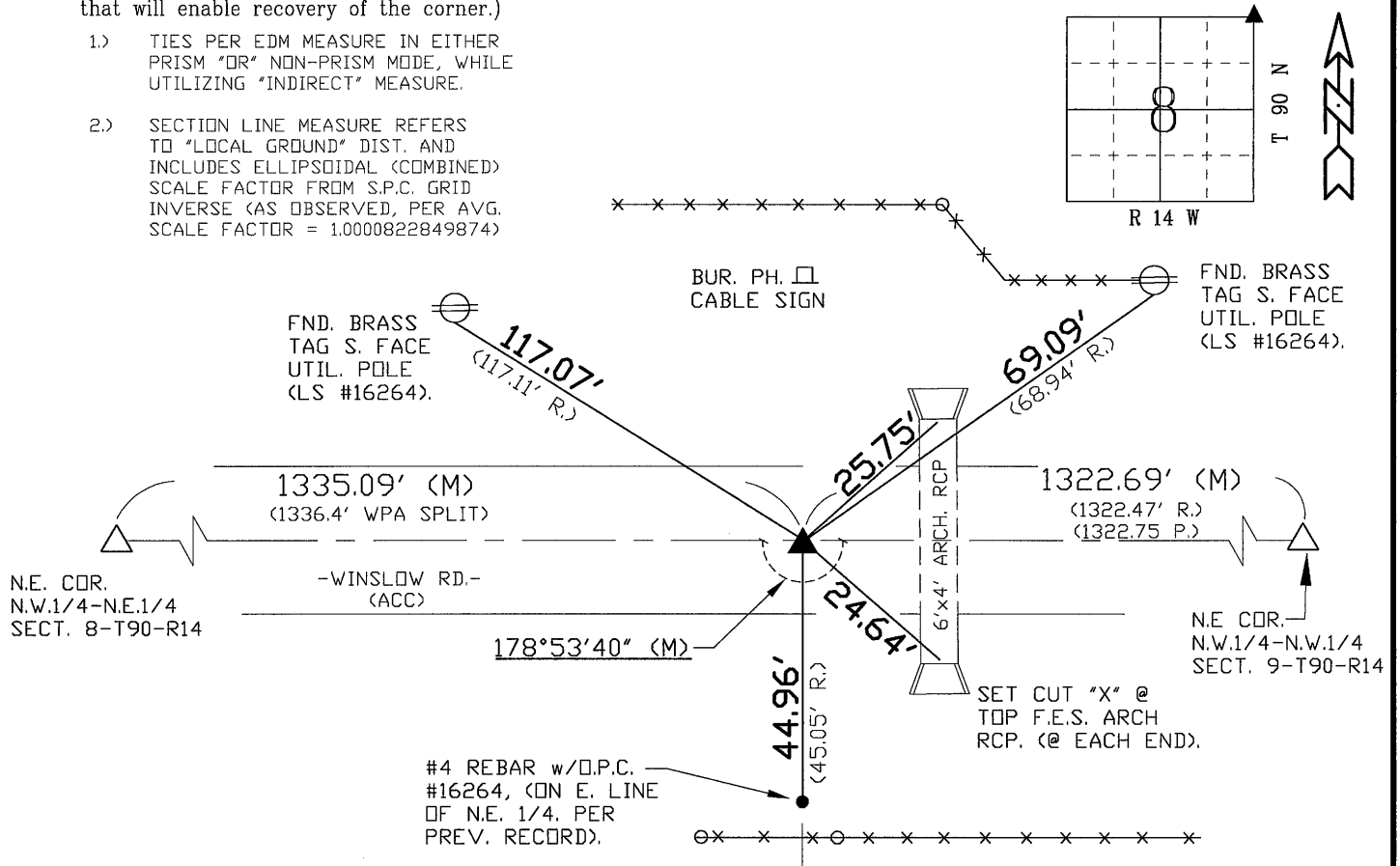
(Show reason for preparing this certificate): The corner monument has been Replaced or Modified, per Ia. Code 355.11(1)(c)

(Evidence and detailed procedures used in establishing the corner position(s) and monumentation found or placed.)

Monument Description and Remarks: N.E. COR.  
FOUND #6 (3/4") REBAR IN EXISTING A.C.C. PAVEMENT PRIOR TO RESURF. PROJECT. TEMP.  
REF. w/RTK GPS, AND MILLED 2" EXIST. PAVEMENT PRIOR TO RESURF. & ADDED 2.5" HMA  
SURFACE COURSE. CORNER **RESET** WITH 5"L. x #5 REBAR @ TEMP. REF. LOCATION, AND  
LOCATED ±7" N. OF C.L. HMA PAVEMENT JOINT.

BHco Hist. Ties: BK. #1003 p.8 90-14  
FIELD BOOK: TopSury7-WinslowHMA

- 1.) TIES PER EDM MEASURE IN EITHER PRISM "OR" NON-PRISM MODE, WHILE UTILIZING "INDIRECT" MEASURE.
- 2.) SECTION LINE MEASURE REFERS TO "LOCAL GROUND" DIST. AND INCLUDES ELLIPSIDAL (COMBINED) SCALE FACTOR FROM S.P.C. GRID INVERSE (AS OBSERVED), PER AVG. SCALE FACTOR = 1.0000822849874)



(NAD83-2007 "BHco07", RTK Obs.)

PREPARED BY: J.D. & G.T. 8/3/10

I hereby certify that this land surveying document was prepared and the related survey work was performed by me or under my direct personal supervision and that I am a duly licensed Land Surveyor under the laws of the State of Iowa.

*Geoffrey Allen Tinker* 08/03/2010  
Geoffrey Allen Tinker (date)

License Number 15748

My license renewal date is December 31, 2010

Pages or sheets covered by this seal:

This Land Corner Certificate Only.



<u>Corner</u>	<u>Section -</u>	<u>Township -</u>	<u>Range</u>
N.E. Cor.	8	90 N	14 W
N.W. Cor.	9	90 N	14 W
S.E. Cor.	5	90 N	14 W
S.W. Cor.	4	90 N	14 W

## INDEX OF ABBREVIATIONS

(M) = "Measured" Dimension	"NP" = Reflectorless EDM Meas.
(P) = "Platted" Dimension	"MLM" = Indirect Measure
(R) = "Recorded" Dimension	"CM" = Concrete Monument
(C) = "Calculated" Dimension	"SM" = Survey Marker Spike/Tag
"IGS" = Iowa Geodetic Survey	"PK" = PK/MAG Nail Brand Style
"WPA" = Works Progress Admin. Survey	
"Φ" = per George Miller Survey (BHC Surveyor 1858-1860)	
"S" = per John Ball Survey (BHC Surveyor 1866-1891)	
"N" = per Nathan Barber Survey (BHC Surveyor 1908-1931)	