

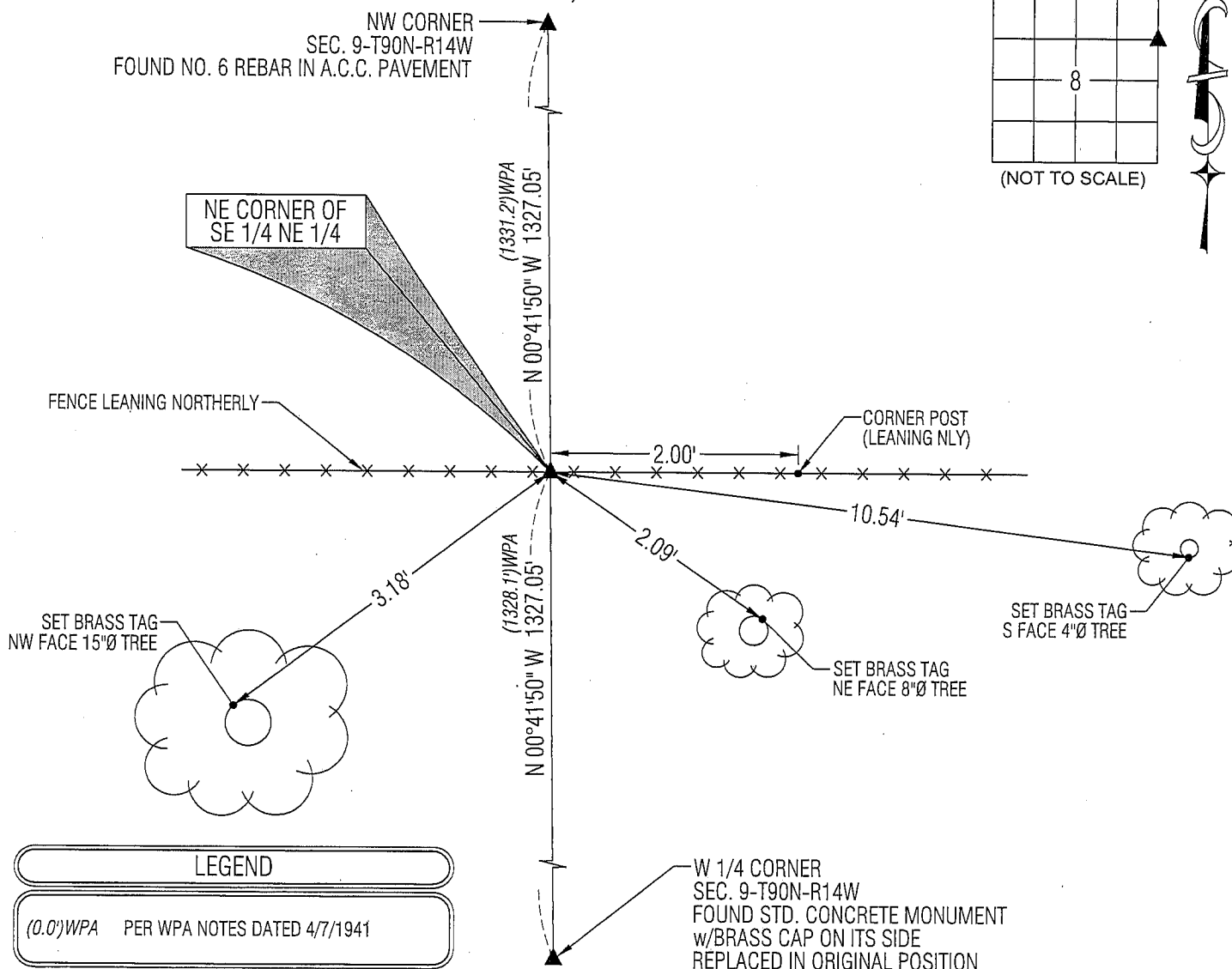
UNITED STATES PUBLIC LAND SURVEY CORNER CERTIFICATE

NO USPLSCC ON FILE. SURVEY COMPLETED IN THE NE 1/4 OF SEC. 9-T90N-R14W.

PLAN VIEW

(NOT TO SCALE)

(NOT TO SCALE)



LEGEND

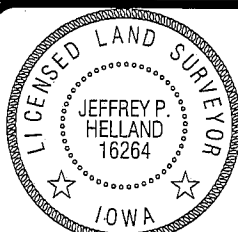
(0.0') WPA PER WPA NOTES DATED 4/7/1941

-W 1/4 CORNER
SEC. 9-T90N-R14W
FOUND STD. CONCRETE MONUMENT
w/BRASS CAP ON ITS SIDE
REPLACED IN ORIGINAL POSITION



1107 Technology Parkway
Cedar Falls, Iowa 50613-6951
(319)-266-0161

SHINER = 8D NAIL & 1 5/16"Ø METAL SHINER
BRASS TAG = 13/16"Ø BRASS TAG
OPC = PLASTIC CAP (O=ORANGE, R=RED, Y=YELLOW)
(00) RECORDED AS FILE NAME: 09-217C4.DWG



Jeffrey P. Hellard
License Number 16264
My license renewal date is December 31, 2009.
All pages or sheets are covered by this seal except:

LIST CORNERS TO BE INDEXED

CORNER	SECTION	TOWNSHIP	RANGE
NE COR. SE ¼ NE ¼	8	90N	14W
SE COR. NE ¼ NE ¼	8	90N	14W
SW COR. NW ¼ NW ¼	9	90N	14W
NW COR. SW ¼ NW ¼	9	90N	14W