

File 2010-00005792

# UNITED STATES PUBLIC LAND SURVEY CORNER CERTIFICATE OF

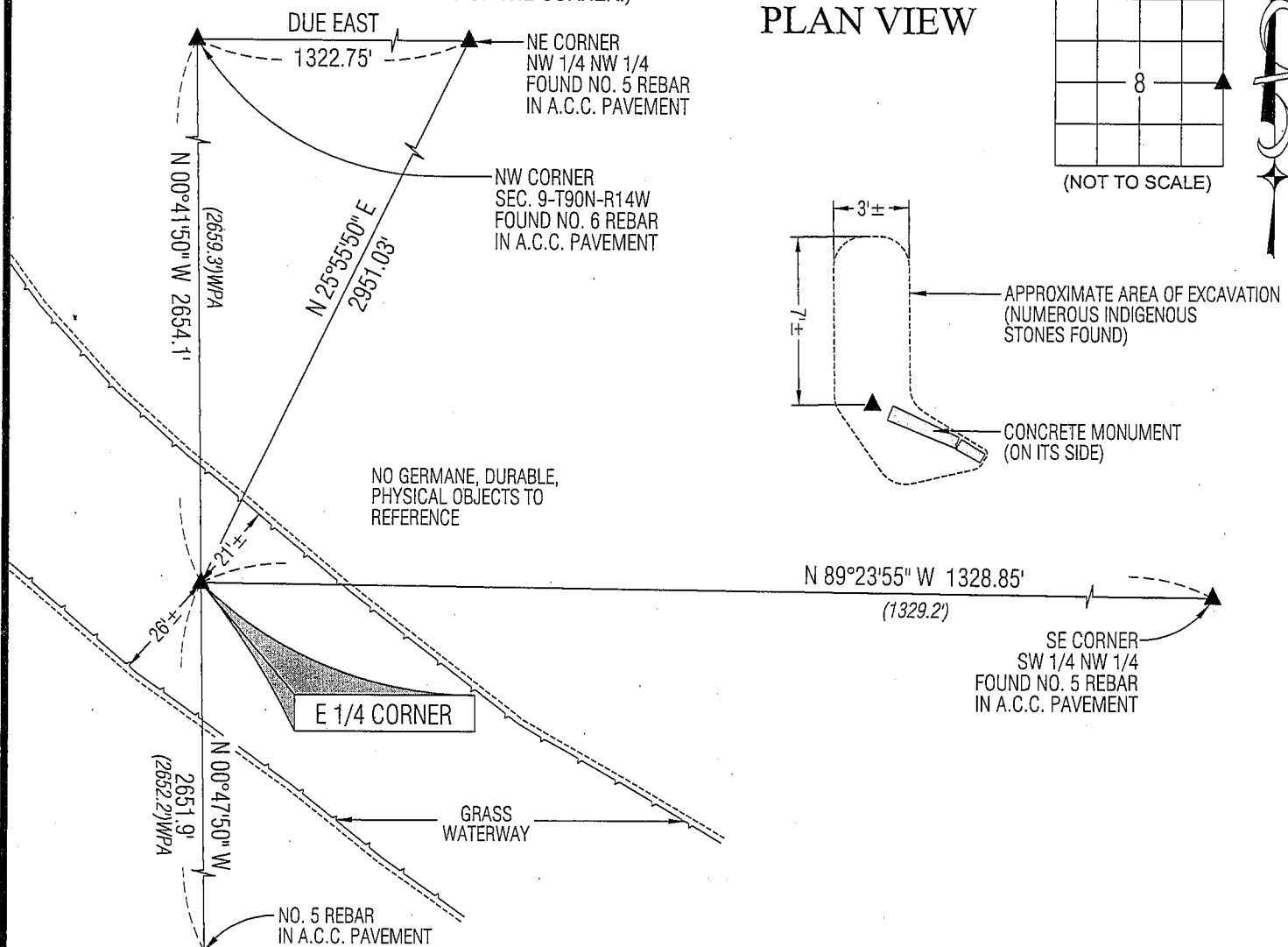
PREVIOUSLY RECORDED IN N/A

MONUMENT DESCRIPTION AND REMARKS:

NO USPLSCC ON FILE. SURVEY COMPLETED IN THE NW 1/4 OF SEC. 9-T90N-R14W.

→ E 1/4 CORNER: WPA NOTES DATED 9/5/1940 CALLS FOR [DUG HOLE FOUND GRANITE STONE 12"x9"x4" THIS STONE WAS ON  
END IN A BED OF NIGGER HEAD LAYING FLAT LOWERED ALL EVIDENCE IN PLACE SET C.M. ON TOP WITH CAP MARKED 7+8  
SET C.M. 12" DEEP STONE LOCATED ON 1/4 FC RUN E & W AND SEC LINE FC. N.S.]. THERE IS A NOTE WRITTEN AT A  
DIFFERENT TIME STATING [DOUBTFUL ??ZY BELIEVE IT SHOULD BE 3 1/2' N.]. ALL REFERENCE TIES HAVE BEEN OBLITERATED  
BY CONSTRUCTION OF GRASS WATERWAY. UTILIZING WPA RANDOM LINE CHAINING NOTES DATED 4/7/1941 STARTED  
EXCAVATION. FOUND STANDARD CONCRETE MONUMENT w/BRASS CAP LYING COMPLETELY ON ITS SIDE 0.8'± DEEP IN  
GRASS WATERWAY. TOP OF CONCRETE MONUMENT WAS BROKEN 1'± FROM TOP. SAID CONCRETE MONUMENT  
APPARENTLY DRUG SELY ALONG PATH OF WATERWAY DURING GRADING. RESTORED CONCRETE MONUMENT IN UPRIGHT  
POSITION IN ITS ORIGINAL POSITION BASED UPON RANDOM LINE NOTES AND ALIGNMENT OF MONUMENT ON ITS SIDE.  
PLACED NO. 4 REBARS ON ALL FOUR SIDES TO STABILIZE BROKEN OFF TOP, TOP OF C.M. IS 0.8'± DEEP.

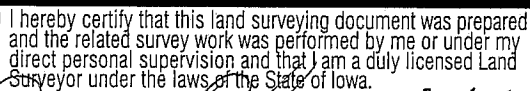
(SHOW A MINIMUM OF THREE REFERENCE TIES TO DURABLE PHYSICAL OBJECTS, RELEVANT MONUMENTS AND PHYSICAL CONDITIONS THAT WILL ENABLE RECOVERY OF THE CORNER.)



(BEARINGS ARE ASSUMED)



SHINER = 8D NAIL & 1 5/16"Ø METAL SHINER  
BRASS TAG = 8D NAIL & 13/16"Ø BRASS TAG  
OPC = PLASTIC CAP (O=ORANGE, R=RED, Y=YELLOW)  
(00') RECORDED AS FILE NAME: 09-217C5.DWG



Jeffrey V. Helland  
License Number 16264  
My license renewal date is December 31, 2009.  
All pages or sheets are covered by this seal except:

LIST CORNERS TO BE INDEXED

CORNER	SECTION	TOWNSHIP	RANGE
E 1/4 CORNER	8	90N	14W
W 1/4 CORNER	9	90N	14W