

Reserved for County Recorder's use.



Doc ID: 012028320001 Type: GEN
Recorded: 10/31/2023 at 09:51:14 AM
Fee Amt: \$7.00 Page 1 of 1
Black Hawk County Iowa
SANDIE L. SMITH RECORDER

File 2024-00005770

Kyle J. Helland, 6109 Chancellor Drive, Cedar Falls, Iowa 50613-6916, (319)-266-0161

UNITED STATES PUBLIC LAND SURVEY CORNER CERTIFICATE
OF

LAND SURVEY MONUMENTS SITUATED IN SECTION NO. 7, TOWNSHIP NO. 90 NORTH, RANGE NO. 14 WEST OF THE FIFTH PRINCIPAL MERIDIAN, BLACK HAWK COUNTY, IOWA.
PREVIOUSLY RECORDED IN #2010-00012263

(SHOW REASON FOR PREPARING THIS CERTIFICATE, THE EVIDENCE AND DETAILED PROCEDURES USED IN ESTABLISHING THE CORNER POSITIONS AND MONUMENTATION FOUND OR PLACED.)

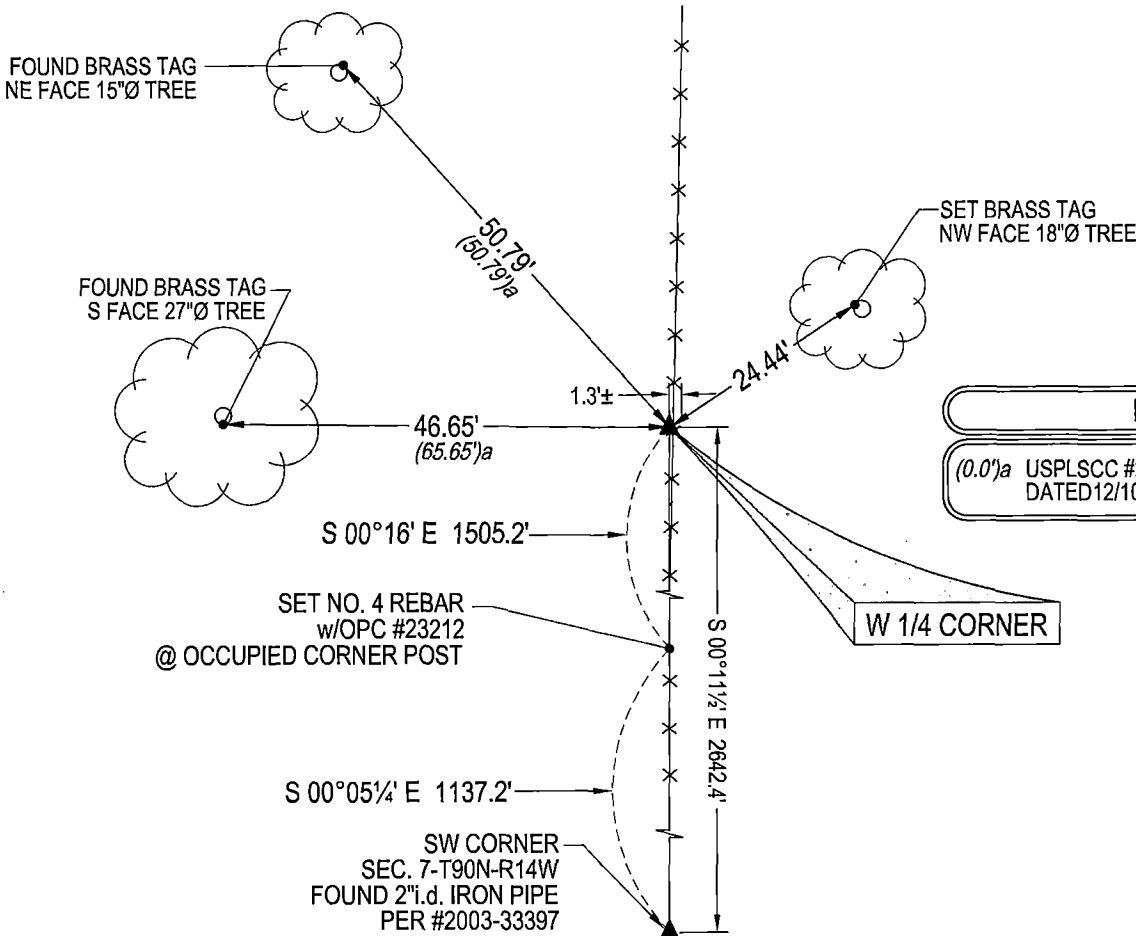
MONUMENT DESCRIPTION AND REMARKS:

ONLY TWO REFERENCE TIES REMAIN. SURVEY COMPLETED IN THE SW FRL 1/4 OF SEC. 7-T90N-R14W.

W 1/4 CORNER: BUTLER COUNTY ENGINEER FIELD BK K PG 8 DATED 6/7-9/1860 CALLS FOR [OAK STAKE & STONE MD. NEARLY OBLITERATED]. BLACK HAWK COUNTY ENGINEER WPA NOTES DATED 4/1941 CALLS FOR [FOUND OAK HUB OR STAKE 3"x3"x30", HAND HEWED TO POINT. ALSO FOUND OLD CORNER POST, 18"DIA. HUB, 0.8' SO. OF OLD POST, BOTH WERE 1.0' BELOW SURFACE. SET S.C.M. FLUSH ON HUB]. USPLSCC #2010-00012263 DATED 12/10/2009 CALLS FOR [FOUND STANDARD 4" CONCRETE MONUMENT (0.2± ABOVE GRADE) w/BRASS CAP(SEE DETAIL). SET NO. 4 REBAR ON NORTH SIDE FOR MAGNETIC DETECTION]. SEARCHED AREA WITH MAGNETIC DETECTOR AND FOUND STANDARD 4" CONCRETE MONUMENT (0.2± ABOVE GROUND. THEREFORE UTILIZED CONCRETE MONUMENT AS CORNER.

PLAN VIEW

(SHOW A MINIMUM OF THREE REFERENCE TIES TO DURABLE PHYSICAL OBJECTS, RELEVANT MONUMENTS AND PHYSICAL CONDITIONS THAT WILL ENABLE RECOVERY OF THE CORNER.)



SEE ASSOCIATED PLAT OF SURVEY FOR "RECORDED AS" INFORMATION

(BEARINGS ARE ASSUMED)



HELLAND ENGINEERING & SURVEYING, LTD.
6109 Chancellor Drive
Cedar Falls, Iowa 50613-6916
(319)-266-0161

BRASS TAG = 4d. NAIL & 13/16"Ø BRASS TAG DRAWN BY: CDR SHINER ≈ 1"Ø STEEL SHINER w/MASONRY NAIL
OPC = PLASTIC CAP (O=ORANGE, R=RED, Y=YELLOW)
(00') RECORDED AS FILE NAME: 23-160-26.DWG



I hereby certify that this land surveying document was prepared and the related survey work was performed by me or under my direct personal supervision and that I am a duly licensed Professional Land Surveyor under the laws of the State of Iowa.
Kyle J. Helland
License Number 23212
My license renewal date is December 31, 2023.
All pages or sheets are covered by this seal except:

LIST CORNERS TO BE INDEXED			
CORNER	SECTION	TOWNSHIP	RANGE
W 1/4 CORNER	7	90N	14W