

Jeffrey P. Helland, 1107 Technology Parkway, Cedar Falls, Iowa 50613-6951, (319)-266-0161

UNITED STATES PUBLIC LAND SURVEY CORNER CERTIFICATE  
OF

LAND SURVEY MONUMENTS SITUATED IN SECTION NO. 7, TOWNSHIP NO. 90 NORTH, RANGE  
NO. 14 WEST OF THE FIFTH PRINCIPAL MERIDIAN, BLACK HAWK COUNTY, IOWA.  
PREVIOUSLY RECORDED IN N/A

(SHOW REASON FOR PREPARING THIS CERTIFICATE, THE EVIDENCE AND DETAILED PROCEDURES USED IN ESTABLISHING THE  
CORNER POSITIONS AND MONUMENTATION FOUND OR PLACED.)

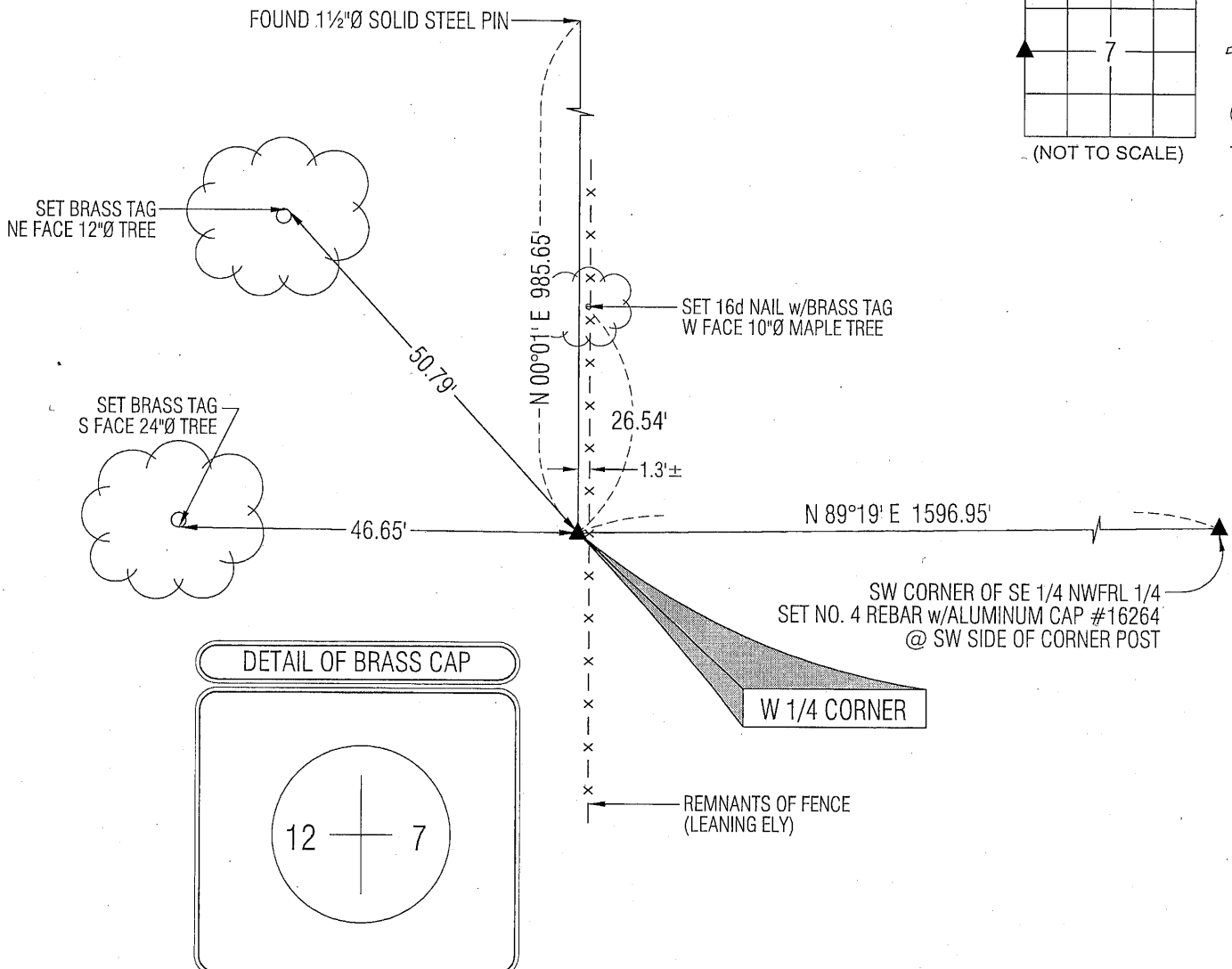
MONUMENT DESCRIPTION AND REMARKS:

NO USPLSCC ON FILE. SURVEY COMPLETED IN THE NW FRL 1/4 OF SEC. 7-T90N-R14W.

W 1/4 CORNER: BUTLER COUNTY ENGINEER FIELD BK K PG 8 DATED 6/7-9/1860 CALLS FOR [OAK STAKE & STONE MD.  
NEARLY OBLITERATED]. BLACK HAWK COUNTY ENGINEER WPA NOTES DATED 4/1941 CALLS FOR [FOUND OAK HUB OR  
STAKE 3"x3"x30", HAND HEWED TO POINT. ALSO FOUND OLD CORNER POST, 18"DIA. HUB, 0.8' SO. OF OLD POST, BOTH  
WERE 1.0' BELOW SURFACE. SET S.C.M. FLUSH ON HUB]. FOUND STANDARD 4"x2" CONCRETE MONUMENT (0.2'± ABOVE  
GRADE) w/BRASS CAP(SEE DETAIL). SET NO. 4 REBAR ON NORTH SIDE FOR MAGNETIC DETECTION.

PLAN VIEW

(SHOW A MINIMUM OF THREE REFERENCE TIES TO DURABLE PHYSICAL OBJECTS, RELEVANT MONUMENTS AND PHYSICAL  
CONDITIONS THAT WILL ENABLE RECOVERY OF THE CORNER.)

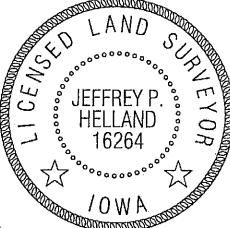


(BEARINGS ARE ASSUMED)



HELLAND ENGINEERING & SURVEYING, LTD.  
1107 Technology Parkway  
Cedar Falls, Iowa 50613-6951  
(319)-266-0161

SHINER = 8D NAIL & 1 5/16" Ø METAL SHINER  
BRASS TAG = 13/16" Ø BRASS TAG  
OPC = PLASTIC CAP (O=ORANGE, R=RED, Y=YELLOW)  
(00') RECORDED AS FILE NAME: 09-276C2.DWG



I hereby certify that this land surveying document was prepared  
and the related survey work was performed by me or under my  
direct personal supervision and that I am a duly licensed Land  
Surveyor under the laws of the State of Iowa.  
*Jeffrey P. Helland 12/10/09*  
Jeffrey P. Helland  
License Number 16264  
My license renewal date is December 31, 2009.  
All pages or sheets are covered by this seal except:

LIST CORNERS TO BE INDEXED			
CORNER	SECTION	TOWNSHIP	RANGE
W 1/4 CORNER	7	90	14W

(9.00)

Rec.