

Jeffrey P. Helland, 1107 Technology Parkway, Cedar Falls, Iowa 50613-6951, (319)-266-0161

UNITED STATES PUBLIC LAND SURVEY CORNER CERTIFICATE OF

LAND SURVEY MONUMENTS SITUATED IN SECTION NO. 7, TOWNSHIP NO. 90 NORTH, RANGE
NO. 14 WEST OF THE FIFTH PRINCIPAL MERIDIAN, BLACK HAWK COUNTY, IOWA.
PREVIOUSLY RECORDED IN FEE BK #2006 10992

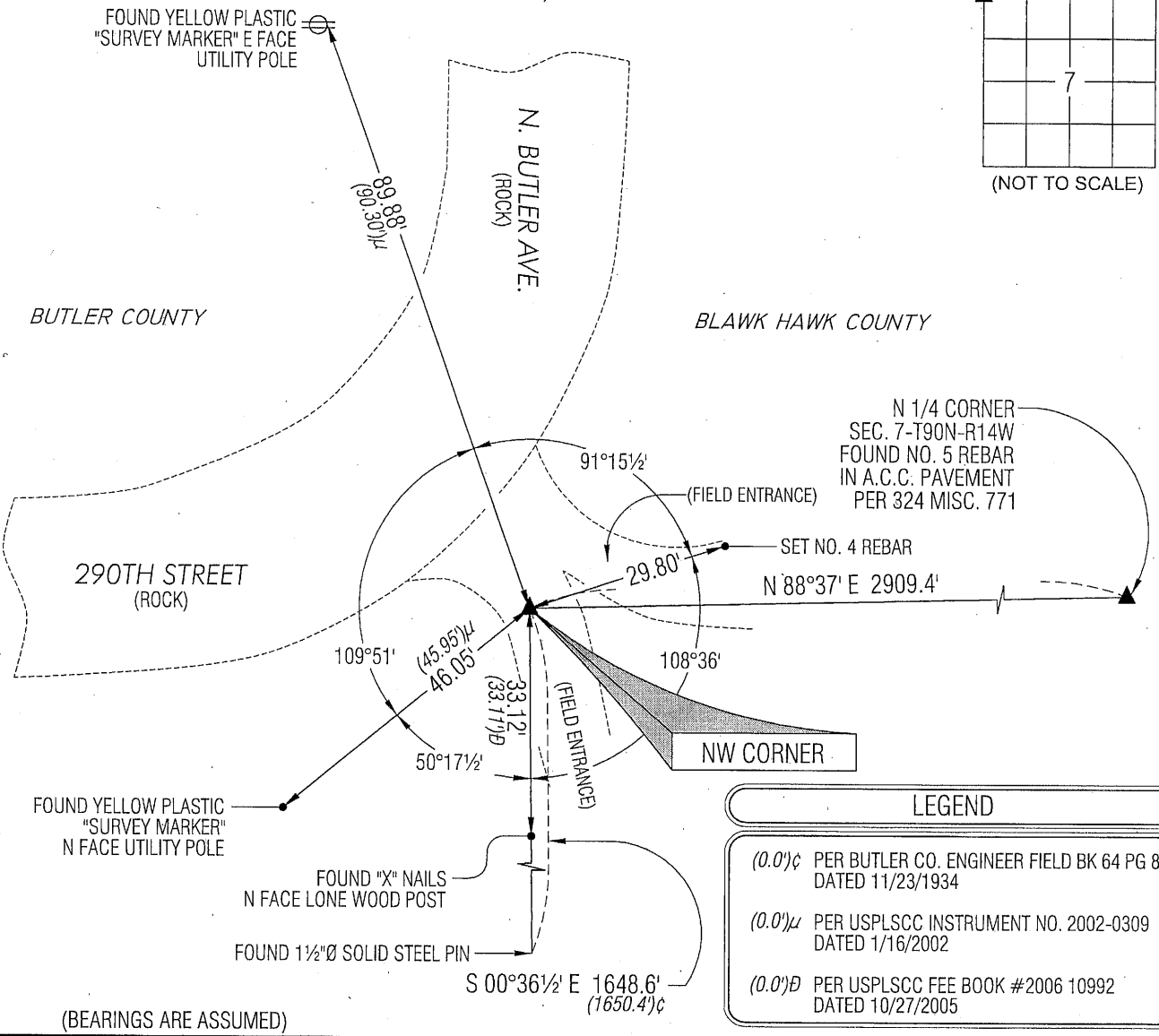
(SHOW REASON FOR PREPARING THIS CERTIFICATE, THE EVIDENCE AND DETAILED PROCEDURES USED IN ESTABLISHING THE
CORNER POSITIONS AND MONUMENTATION FOUND OR PLACED.)

MONUMENT DESCRIPTION AND REMARKS: REFERENCE TIES HAVE CHANGES FROM FEE BK #2006 10992. SURVEY
COMPLETED IN THE NWFRL 1/4 OF SEC. 7-T90N-R14W.

→ NW CORNER: BUTLER COUNTY ENGINEER FIELD BK K PG 8 DATED 6/7-9/1860 CALLS FOR [STONE IN MD.]. BLACK HAWK
COUNTY AUDITOR'S SURVEY BOOK PAGE 619 DATED 5/1/1884 CALLS FOR [STONE]. BUTLER COUNTY ENGINEER FIELD BK 64
PG 8 DATED 11/23/1934 CALLS FOR [LIMESTONE]. BUTLER COUNTY USPLCC INST. NO. 2002-0309 DATED 1/16/2002 CALLS
FOR [FOUND 2" GAS PIPE]. BLACK HAWK COUNTY FEE BOOK #2006 10992 DATED 10/27/2005 CALLS FOR [FOUND 2"Ø GAS
PIPE BENT SOUTH - REMOVED PIPE AND FOUND STANDARD CONCRETE MONUMENT 19" DEEP. SET 1/2"Ø x 13" IRON PIN
W/CAP NO. 10040 ABOVE MONUMENT.]. FOUND NO. 4 REBAR w/YPC #10040 (0.4'± DEEP).

PLAN VIEW

(SHOW A MINIMUM OF THREE REFERENCE TIES TO DURABLE PHYSICAL OBJECTS, RELEVANT MONUMENTS AND PHYSICAL
CONDITIONS THAT WILL ENABLE RECOVERY OF THE CORNER.)

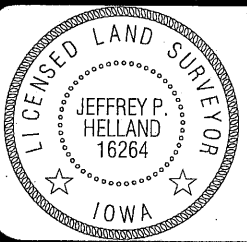


(BEARINGS ARE ASSUMED)

**HES**

HELLAND ENGINEERING & SURVEYING, LTD.
1107 Technology Parkway
Cedar Falls, Iowa 50613-6951
(319)-266-0161

SHINER = 8D NAIL & 1 5/16"Ø METAL SHINER
BRASS TAG = 13/16"Ø BRASS TAG
OPC = PLASTIC CAP (O=ORANGE, R=RED, Y=YELLOW)
(00') RECORDED AS FILE NAME: 09-276C1.DWG



I hereby certify that this land surveying document was prepared
and the related survey work was performed by me or under my
direct personal supervision and that I am a duly licensed Land
Surveyor under the laws of the State of Iowa.

Jeffrey P. Helland 12/16/09
Jeffrey P. Helland
License Number 16264
My license renewal date is December 31, 2009.
All pages or sheets are covered by this seal except:

LIST CORNERS TO BE INDEXED			
CORNER	SECTION	TOWNSHIP	RANGE
NW CORNER	7	90N	14W
SW CORNER	6	90N	14W

9.0) 36.00' ad

Rec