



Doc ID: 004217450001 Type: GEN
Kind: CORNER
Recorded: 08/04/2010 at 10:12:17 AM
Fee Amt: \$0.00 Page 1 of 1
Black Hawk County Iowa
JUDITH A MCCARTHY RECORDER

File 2011-00002250

PREPARED BY: BLACK HAWK COUNTY ENGINEERS OFFICE
316 E. FIFTH STREET, ROOM 211 WATERLOO, IOWA 50703

PH.# (319) 833-3008
FAX# (319) 833-3139

SLSI 9-94
BHCO 03-09

UNITED STATES PUBLIC LAND SURVEY CORNER CERTIFICATE OF
Land Survey Monuments situated in Section 7, Township 90 N,
Range 14 W, of the Fifth Principal Meridian, BLACK HAWK County, Iowa.
Previously recorded in File Book 2010, Page 009023, in County Recorder's Office.

(Show reason for preparing this certificate): The corner monument has been Replaced or Modified, per Ia. Code 355.11(1)(c)
(Evidence and detailed procedures used in establishing the corner position(s) and monumentation found or placed.)

Monument Description and Remarks: E. 1/16 N. COR.
FOUND PK (MAG NAIL) per. PREV. RECORD, PRIOR TO RESURFACE PROJECT. TEMP. REF.
w/RTK GPS, AND MILLED 2" EXIST. ACC PAVEMENT PRIOR TO RESURF. & ADDED 2.5" HMA
SURFACE COURSE. CORNER RESET WITH 6"L. x #5 REBAR LOC. ±10" S. OF C.L. HMA JOINT
& ALIGNED w/ TREE LINE (±) TO N. (LOC. APPROX. ±12"-18" EAST OF END POST TO N.).
CORNER LOCATED ON NORTH LINE OF N.E. 1/4 SAID SECTION, PER PREVIOUS RECORD.

NOTE: ALL DISTANCES PLUMB/HORIZ.
(H.D.), "UNLESS DENOTED".

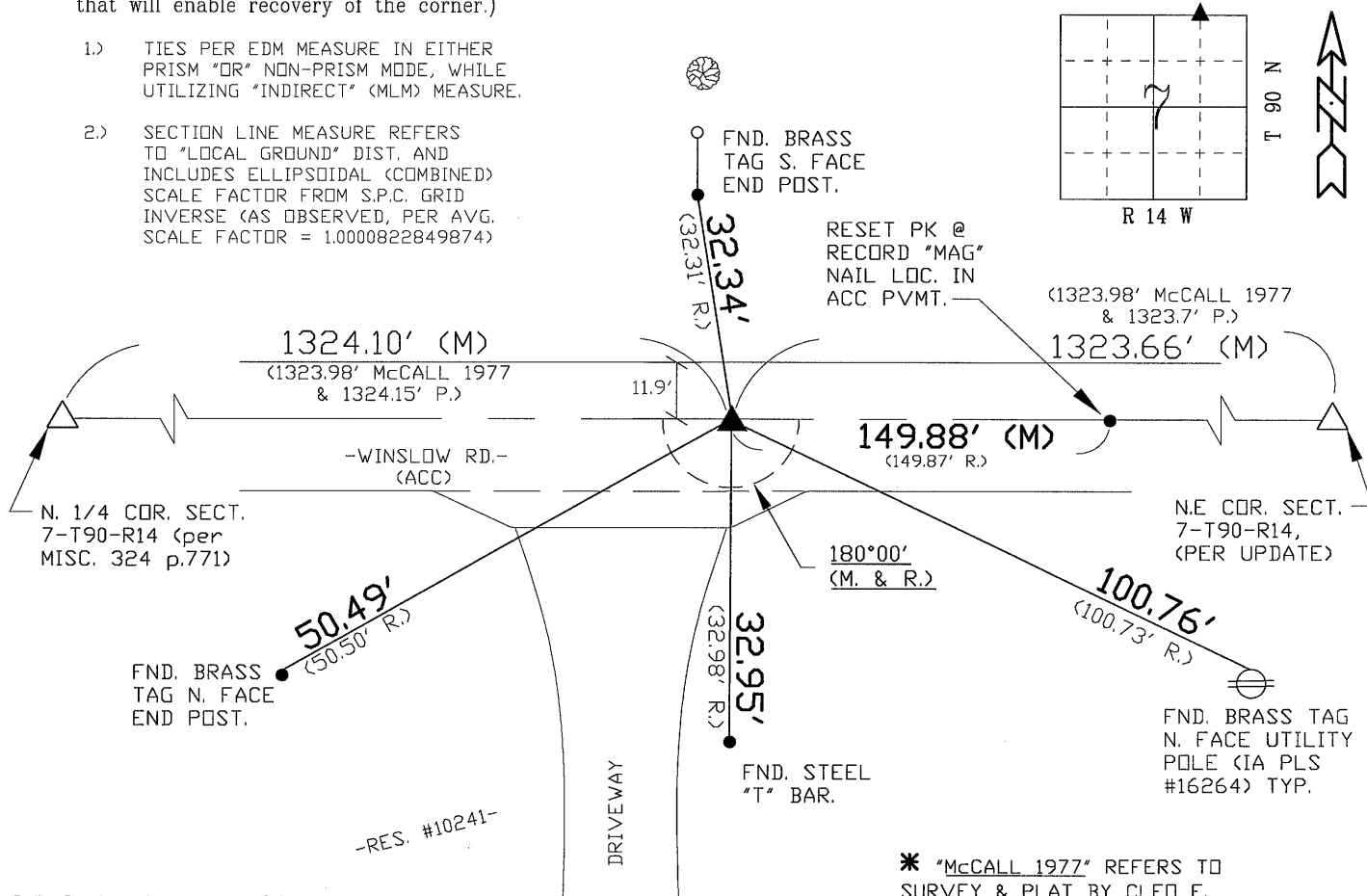
PLAN VIEW

BHco Hist. Ties: -N/A-

FIELD BOOK: TopSurv7-WinslowHMA

(Show a minimum of three reference ties to durable physical objects, relevant monuments and physical conditions that will enable recovery of the corner.)

- 1.) TIES PER EDM MEASURE IN EITHER PRISM "OR" NON-PRISM MODE, WHILE UTILIZING "INDIRECT" (MLM) MEASURE.
- 2.) SECTION LINE MEASURE REFERS TO "LOCAL GROUND" DIST. AND INCLUDES ELLIPSOIDAL (COMBINED) SCALE FACTOR FROM S.P.C. GRID INVERSE (AS OBSERVED, PER AVG. SCALE FACTOR = 1.0000822849874)



* "McCALL 1977" REFERS TO
SURVEY & PLAT BY CLEO E.
McCALL DATED 8/10/1977

S.P.C., Ia. N. Zone, USft

N=3693521.96'

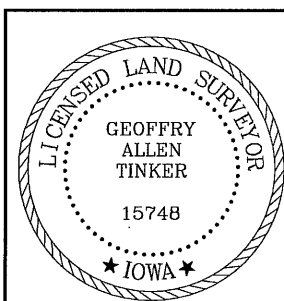
E=5179930.20'

(NAD83-2007 "BHco07", RTK Obs.)

FIELD SURVEY: G.T. & J.D. & M.C. 06/04/10

PREPARED BY: J.D. & G.T. 8/3/10

CERTIFICATION



I hereby certify that this land surveying document was prepared and the related survey work was performed by me or under my direct personal supervision and that I am a duly licensed Land Surveyor under the laws of the State of Iowa.

Geoffrey Allen Tinker 08/03/10
Geoffrey Allen Tinker (date)

License Number 15748

My license renewal date is December 31, 2010

Pages or sheets covered by this seal:

This Land Corner Certificate Only.

LIST CORNERS TO BE INDEXED

Corner	Section -	Township -	Range
N.E. Cor.	7	90 N	14 W
NW1/4-NE1/4			
S.E. Cor.	6	90 N	14 W
SW1/4-SE1/4			

INDEX OF ABBREVIATIONS

(M) = "Measured" Dimension
(P) = "Platted" Dimension
(R) = "Record" Dimension
(C) = "Calculated" Dimension
"IGS" = Iowa Geodetic Survey
"WPA" = Works Progress Admin. Survey
"φ" = per George Miller Survey (BHco Surveyor 1858-1880)
"B" = per John Ball Survey (BHco Surveyor 1866-1891)
"N" = per Nathan Barber Survey (BHco Surveyor 1908-1931)
"NP" = Reflectorless EDM Meas.
"MLM" = Indirect Measure
"CM" = Concrete Monument
"SM" = Survey Marker Spike/Tag
"PK" = PK/MAG Nail Brand Style