



Doc ID: 003960870001 Type: GEN
Kind: CORNER
Recorded: 11/03/2009 at 11:09:34 AM
Fee Amt: \$9.00 Page 1 of 1
Instr# 200900013400
Black Hawk County Iowa
JUDITH A MCCARTHY RECORDER
Book 1080 Page 93783 - 93783

File **2010-00009023**

* Jeffrey P. Helland, 1107 Technology Parkway, Cedar Falls, Iowa 50613-6951, (319)-266-0161

UNITED STATES PUBLIC LAND SURVEY CORNER CERTIFICATE OF

LAND SURVEY MONUMENTS SITUATED IN SECTION NO. 7, TOWNSHIP NO. 90 NORTH, RANGE
NO. 14 WEST OF THE FIFTH PRINCIPAL MERIDIAN, BLACK HAWK COUNTY, IOWA.

PREVIOUSLY RECORDED IN N/A

(SHOW REASON FOR PREPARING THIS CERTIFICATE, THE EVIDENCE AND DETAILED PROCEDURES USED IN ESTABLISHING THE
CORNER POSITIONS AND MONUMENTATION FOUND OR PLACED.)

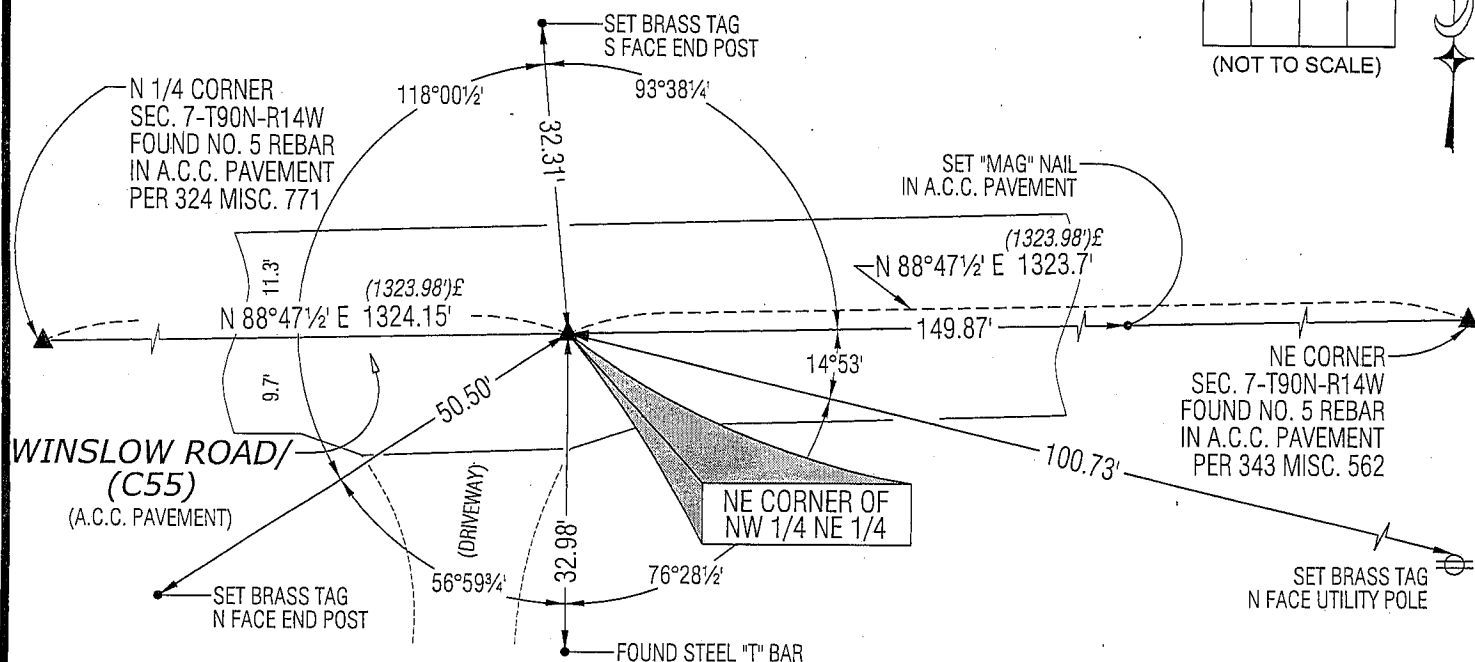
MONUMENT DESCRIPTION AND REMARKS:

NO USPLSCC ON FILE. SURVEY COMPLETED IN THE NE 1/4 OF SEC. 7-T90N-R14W.

→ **NE CORNER NW 1/4 NE 1/4:** BLACK HAWK COUNTY ENGINEER FIELD BOOK DATED 3/28/1941 CALLS FOR [FC. N & S].
PLAT OF SURVEY BY CLEO E. McCALL DATED 8/10/1977 INDICATES CORNER IS AT THE MIDPOINT OF THE NORTH LINE OF
THE NE 1/4 1323.98' FROM BOTH THE N 1/4 CORNER AND THE NE CORNER OF SEC. 7. SET "MAG" NAIL IN A.C.C. PAVEMENT
USING AN EXTENSION OF THE FOUND MONUMENTS PER SAID PLAT OF SURVEY BY CLEO E. McCALL TO THE SOUTH AND ON
A STRAIGHT LINE BETWEEN THE N 1/4 CORNER AND NE CORNER. FOUND SMALL NAIL (ORIGIN UNKNOWN) 0.9' WEST OF
SAID "MAG" NAIL.

PLAN VIEW

(SHOW A MINIMUM OF THREE REFERENCE TIES TO DURABLE PHYSICAL OBJECTS, RELEVANT MONUMENTS AND PHYSICAL
CONDITIONS THAT WILL ENABLE RECOVERY OF THE CORNER.)



LEGEND

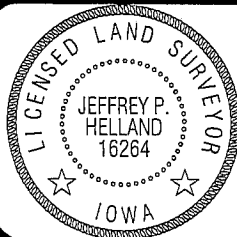
(0.0') E PER SURVEY AND PLAT
BY CLEO E. McCALL DATED 8/10/1977

(BEARINGS ARE ASSUMED)



HELLAND ENGINEERING & SURVEYING, LTD.
1107 Technology Parkway
Cedar Falls, Iowa 50613-6951
(319)-266-0161

SHINER = 8D NAIL & 1 5/16" Ø METAL SHINER
BRASS TAG = 13/16" Ø BRASS TAG
OPC = PLASTIC CAP (O=ORANGE, R=RED, Y=YELLOW)
(00') RECORDED AS FILE NAME: 09-251C1.DWG



I hereby certify that this land surveying document was prepared
and the related survey work was performed by me or under my
direct personal supervision and that I am a duly licensed Land
Surveyor under the laws of the State of Iowa.

Jeffrey P. Helland 10/23/09
Jeffrey P. Helland
License Number 16264
My license renewal date is December 31, 2009.
All pages or sheets are covered by this seal except:

LIST CORNERS TO BE INDEXED

CORNER	SECTION	TOWNSHIP	RANGE
NE COR. NW 1/4 NE 1/4	7	90N	14W
SE COR. SW 1/4 SE 1/4	6	90N	14W
SW COR. SE 1/4 SE 1/4	6	90N	14W
NW COR. NE 1/4 NE 1/4	7	90N	14W