

Misc
INDEX
MARGIN
PROOF
COMPARE

BLACK HAWK COUNTY IOWA: SS
Filed for record APR 11, 19 97 at
4:00 P.M. and recorded in Book 324
of Misc Page 772

18799

Catherine L. Less Recorder
Fee N/C
COUNTY ENGINEER

PREPARED BY: BLACK HAWK COUNTY ENGINEERS OFFICE
316 E. FIFTH STREET, ROOM 211 WATERLOO, IOWA 50703

PH.# (319) 291-2419
FAX.# (319) 291-2461

SLSI 9-84
CERT 12-96

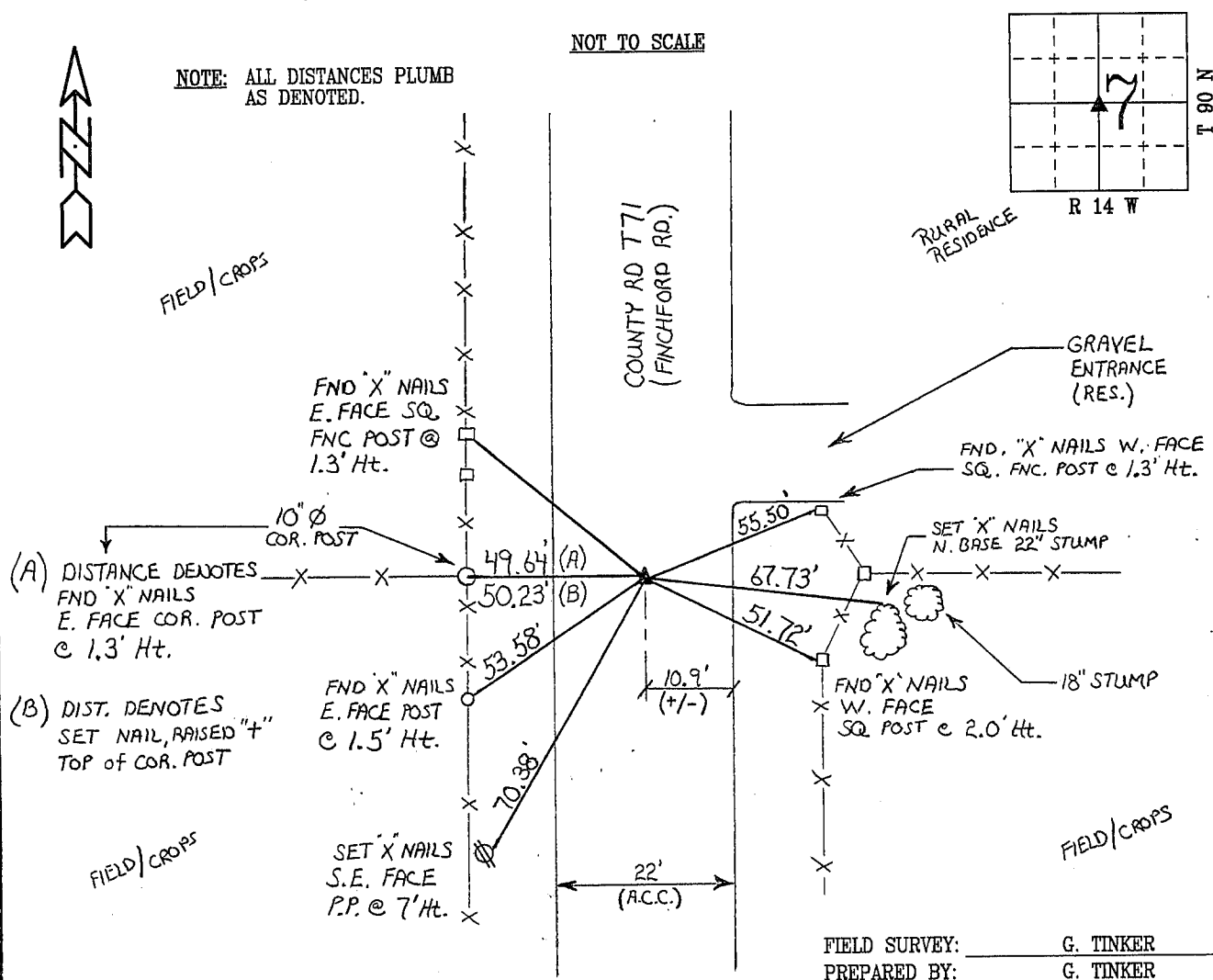
UNITED STATES PUBLIC LAND SURVEY CORNER CERTIFICATE OF
Land Survey Monuments situated in Section 7, Township 90 N,
Range 14 W, of the Fifth Principal Meridian, BLACK HAWK County, Iowa.
Previously recorded in Book N/A, Page N/A, in County Recorder's Office.

(Show reason for preparing this certificate, the evidence and detailed procedures used in establishing the corner positions and monumentation found or placed.)

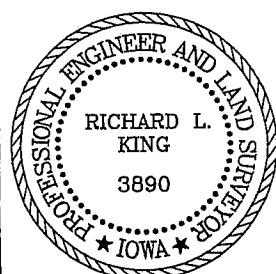
Monument Description and Remarks: Found 5/8" Rebar flush w/ A.C.C. surf.
loc. 10.9' (+/-) W. of E. Edge A.C.C. pavement. Field recovered 5 sets of
"X" nails previously utilized and documented in County Engineers Corner Tie Book
#1003, p. A (red dot bk.) dated 5/83 along with a prior dated set. Found ties
from 5/83 agree to +/- .20' with roadbed noticeably raised from original ref.
ties and Est. 3 new ref. ties. Corner utilized for Survey in NE 1/4, NW 1/4.

PLAN - VIEW

(Show a minimum of three reference ties to durable physical objects, relevant monuments and physical conditions that will enable recovery of the corner.)



CERTIFICATION



I hereby certify that this land surveying document was prepared and the related survey work was performed by me or under my direct personal supervision and that I am a duly licensed Land Surveyor under the laws of the State of Iowa.

Richard L. King 4/11/97 (date)
Richard L. King

License Number 3890

My license renewal date is December 31, 1997

Pages or sheets covered by this seal:

This Land Corner Certificate Only.

LIST CORNERS TO BE INDEXED

Corner	Section	Township	Range
CENTER	7	90 N	14 W

BOOK 324 PAGE 772