

File **2013-00011519**

PH.# (319) 833-3008
FAX.# (319) 833-3139

SLSI 9-94
BHCO 03-09

Land Survey Monuments situated in Section 6, Township 90 N,
Range 14 W, of the Fifth Principal Meridian, BLACK HAWK County, Iowa.
Previously recorded in Misc Book N/A, Page N/A, in County Recorder's Office.
(Show reason for preparing this certificate): There is No Certificate for the corner on file with County Recorder, per
Ia. Code 355.11(1)(a).

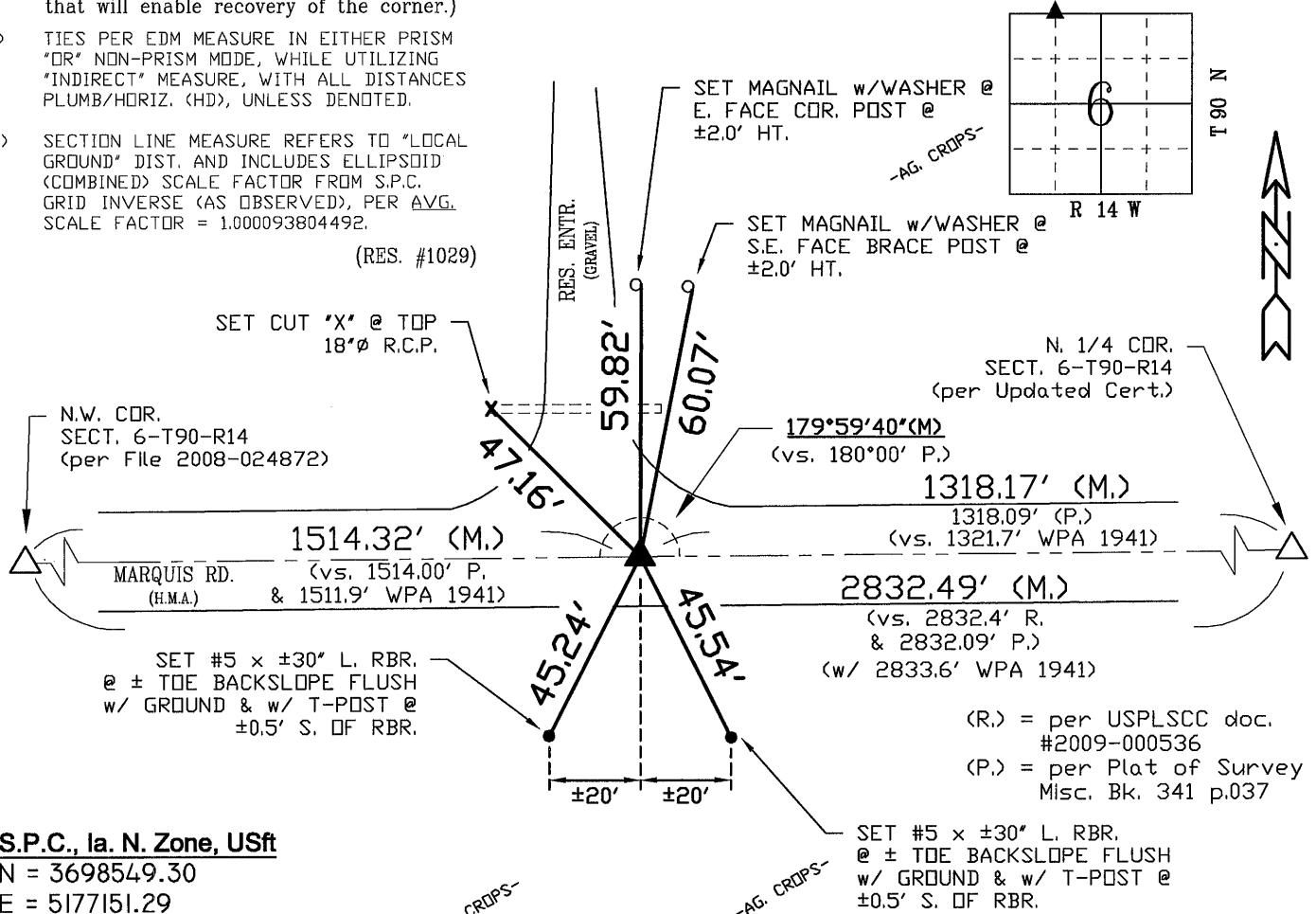
(Evidence and detailed procedures used in establishing the corner position(s) and monumentation found or placed.)
Monument Description and Remarks: W. 16th CORNER (N),
CORNER RESET & TIES UPDATED PER H.M.A. RESURF. PROJECT LFM-503--7X-07, PRIOR TO
RESURF. PROJECT, FOUND PK NAIL AND TEMP. REF. COR. LOCATION PER RTK GPS, CORNER
"NOT" ON FILE WITH BLACK HAWK COUNTY RECORDER, AND BREMER COUNTY RECORDS NOT
RESEARCHED FOR REFERENCE, AFTER 1.5" DEEP MILL & REFILL w/ INTERMED. COURSE
H.M.A., NO SOUNDING REMAINING @ LOCATION, AFTER ADDITIONAL 1.5" H.M.A. SURFACE
COURSE, RESET CORNER WITH 5/8" (#5) x ±8'L. REBAR LOCATED AT ±0.3' SOUTH OF C.L.
H.M.A. JOINT AND ALIGNED (±) WITH CORNER POST TO NORTH.

BHco Hist. Ties: N/A
FIELD BOOK: Ties per Topcon 7003i #Z0115

"NOT TO SCALE"

(Show a minimum of three reference ties to durable physical objects, relevant monuments and physical conditions that will enable recovery of the corner.)

- 1.) TIES PER EDM MEASURE IN EITHER PRISM "OR" NON-PRISM MODE, WHILE UTILIZING "INDIRECT" MEASURE, WITH ALL DISTANCES PLUMB/HORIZ. (HD), UNLESS DENOTED.
- 2.) SECTION LINE MEASURE REFERS TO "LOCAL GROUND" DIST. AND INCLUDES ELLIPSOID (COMBINED) SCALE FACTOR FROM S.P.C. GRID INVERSE (AS OBSERVED), PER AVG. SCALE FACTOR = 1.000093804492.



S.P.C., la. N. Zone, USft

N = 3698549.30

$$E = 5177151.29$$

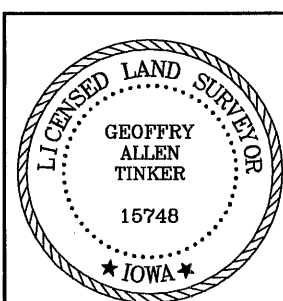
CONVERGENCE = $0^{\circ} 38' 41''$

(NAD83-NSRS2007 "BHco07", RTK Obs.)

FIELD SURVEY: S.S. 9/11/12

PREPARED BY: S.S. & G.T. 12/4/12

LIST CORNERS TO BE INDEXED



I hereby certify that this land surveying document was prepared and the related survey work was performed by me or under my direct personal supervision and that I am a duly licensed Land Surveyor under the laws of the State of Iowa.

Geoffrey Allen Tinker 12/04/2012
(date)

License Number 15748

My license renewal date is December 31, 2012

Pages or sheets covered by this seal:

This Land Corner Certificate Only.

<u>Corner</u>	<u>Section</u>	<u>Township</u>	<u>Range</u>
N.E. Cor.	6	90 N	14 W
NW1/4-NW1/4			

INDEX OF ABBREVIATIONS

(M)	= "Measured" Dimension	"NP" = Reflecterless EDM Meas.
(P)	= "Platted" Dimension	"MLM" = Indirect Measure
(R)	= "Record" Dimension	"CM" = Concrete Monument
(C)	= "Calculated" Dimension	"SM" = Survey Marker/Tag
"GS"	= Iowa Geodetic Survey	"PK" = PK/MAG Nail Brand Style
"WPA"	= Works Progress Admin. Survey	
"Φ"	= per George Miller Survey (BHC Surveyor 1858-1860)	
"S"	= per John Ball Survey (BHC Surveyor 1866-1891)	
"N"	= per Nathan Barber Survey (BHC Surveyor 1908-1931)	