

INDEX
MARGIN
PROOF
COMPARE

BLACK HAWK COUNTY IOWA:SS 010345
Filed for record NOV 14, 2000 at
4:00 P.M. and recorded in Book
of _____ Page _____
Dennis R. Prange Recorder
Fee 1-5.00/
PRANGE SURVEYING

PREPARED BY: PRANGE SURVEYING, 3304 PANTHER LANE, CEDAR FALLS, IOWA 50613

SLSI 9-94
CERT 12-96

UNITED STATES PUBLIC LAND SURVEY CORNER CERTIFICATE OF
Land Survey Monuments situated in Section 6, Township 90N,
Range 14W, of the Fifth Principal Meridian, Black Hawk County, Iowa.
Previously recorded in Book 320, Page 793, in County Recorder's Office.

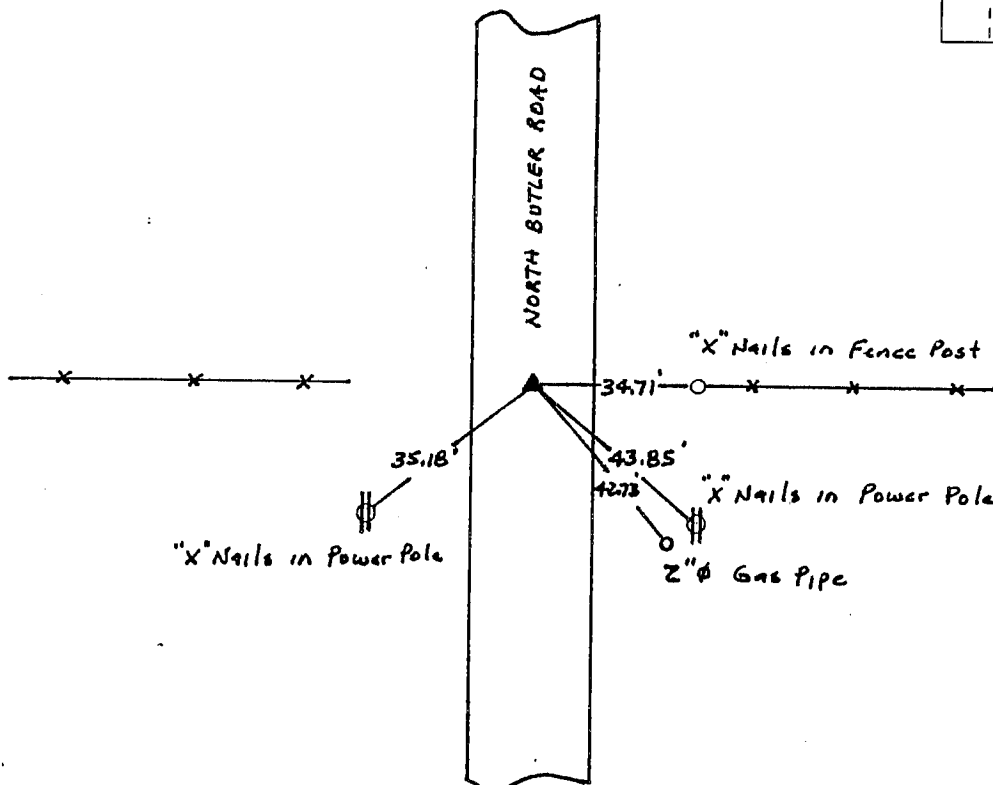
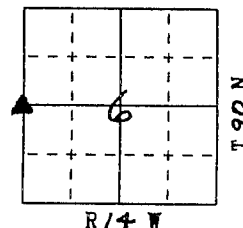
^{MISC}
(Show reason for preparing this certificate, the evidence and detailed procedures used in establishing the corner positions and monumentation found or placed.)

Monument Description and Remarks: Found 7/8" diameter Iron Pin.

PLAN - VIEW

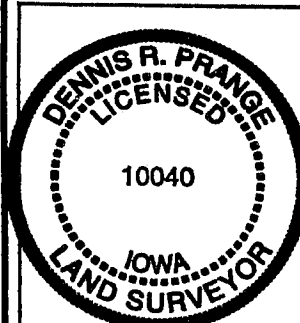
(Show a minimum of three reference ties to durable physical objects, relevant monuments and physical conditions that will enable recovery of the corner.)

NOT TO SCALE



FIELD SURVEY: November 2, 2000
PREPARED BY: Dennis R. Prange

CERTIFICATION



I hereby certify that this land surveying document was prepared and the related survey work was performed by me or under my direct personal supervision and that I am a duly licensed Land Surveyor under the laws of the State of Iowa.

Dennis R. Prange November 8, 2000
(date)

License Number 10040

My license renewal date is December 31, 2000

Pages or sheets covered by this seal:

This Land Corner Certificate Only.

LIST CORNERS TO BE INDEXED

Corner Section - Township - Range
W 1/4 Cor. 6 T 90 N R 14 W